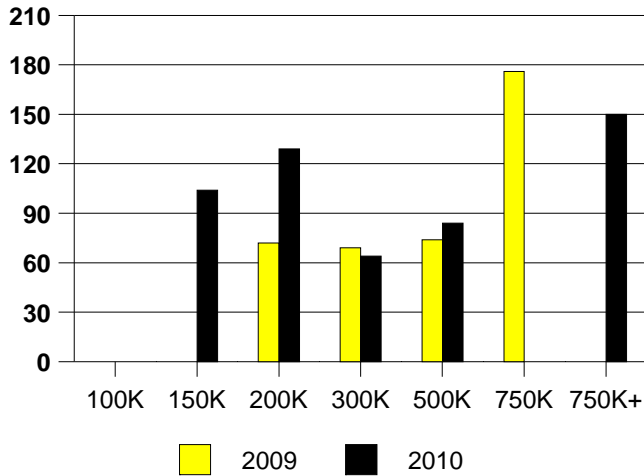
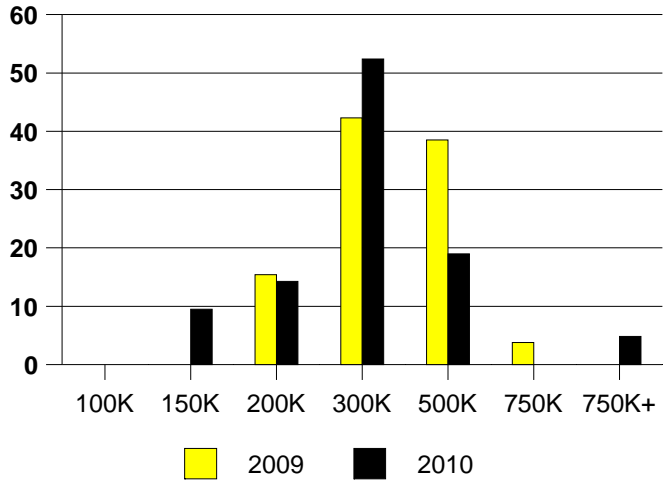


	<u>2009</u>	<u>2010</u>
Total Sold Volume	\$ 7,828,650	\$ 5,712,711
Number of Sales	26	21
Median Sale Price	\$ 269,375	\$ 252,000

DAYS ON THE MARKET (ADDISON)



ADDISON MKT SHARE BY PRICE RANGE



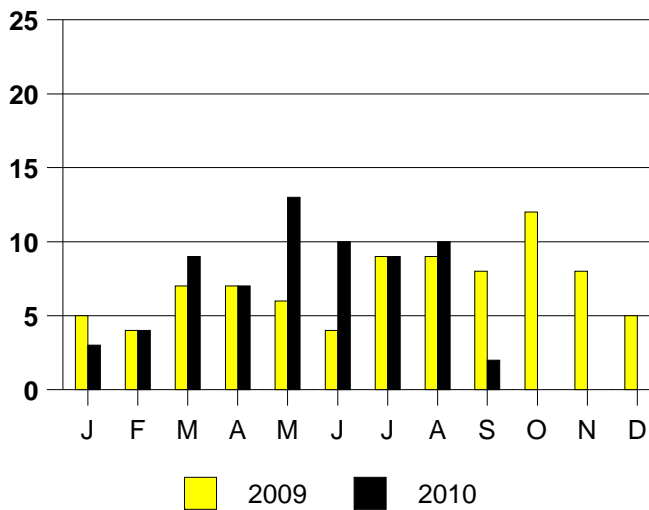
SALE/LIST PRICE RATIO

0K-100K	NONE
101K-150K	100.3%
151K-200K	98.5%
201K-300K	97.2%
301K-500K	95.0%
501K-750K	NONE
751K+	86.8%

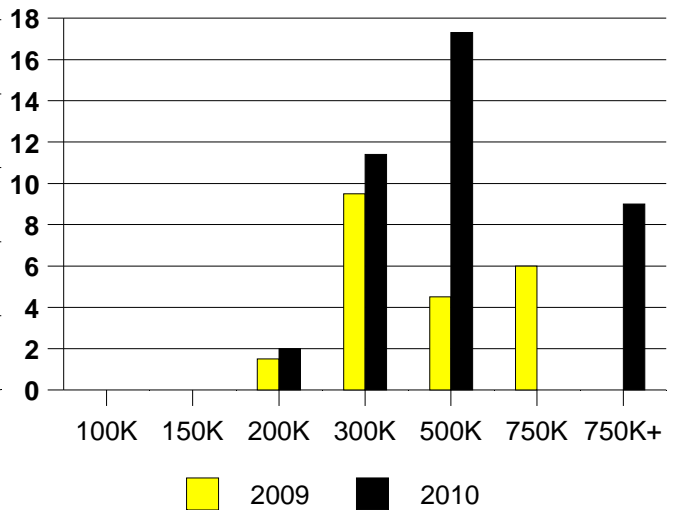
AVERAGE OVERPRICING
Original List Price to Sale Price

2009	5.3%
2010	7.4%

ADDISON MONTHLY SALES

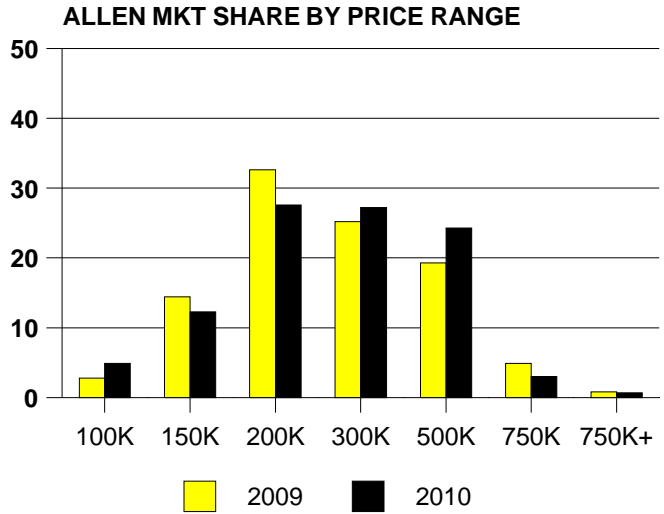
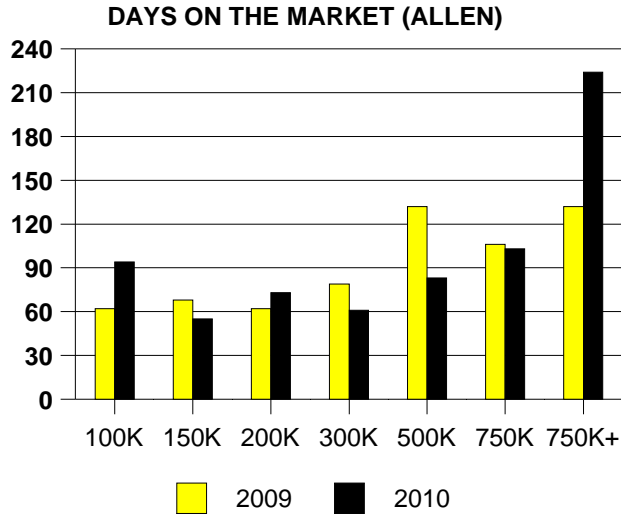


Inventory not shown where no sales
ADDISON MONTHS OF INVENTORY



NTREIS Sold informaton as of 10/02/2010

	<u>2009</u>	<u>2010</u>
Total Sold Volume	\$ 95,545,784	\$ 67,414,912
Number of Sales	389	268
Median Sale Price	\$ 200,160	\$ 221,500



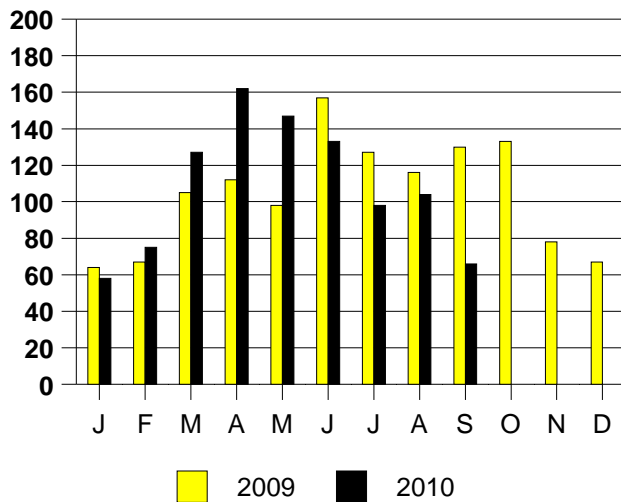
SALE/LIST PRICE RATIO

0K-100K	94.1%
101K-150K	96.8%
151K-200K	97.9%
201K-300K	96.5%
301K-500K	95.4%
501K-750K	96.3%
751K+	89.6%

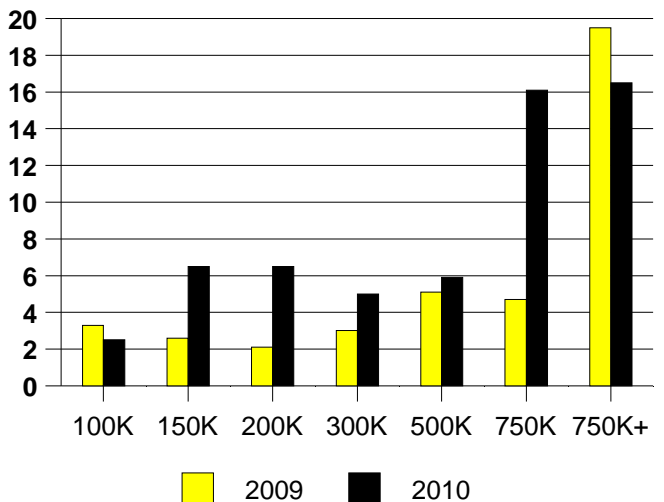
AVERAGE OVERPRICING
Original List Price to Sale Price

2009	6.4%
2010	6.3%

ALLEN MONTHLY SALES



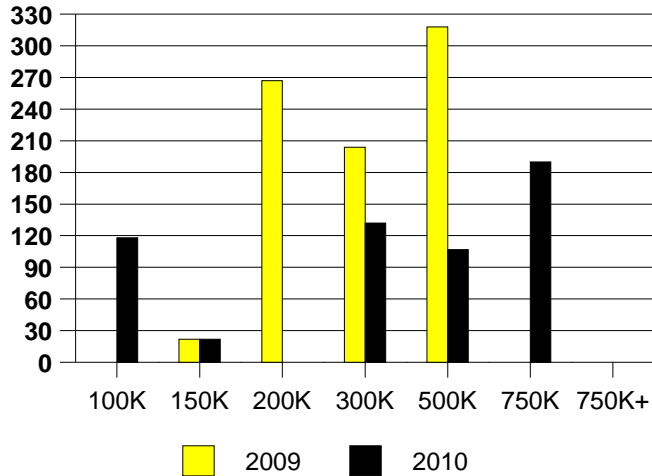
ALLEN MONTHS OF INVENTORY



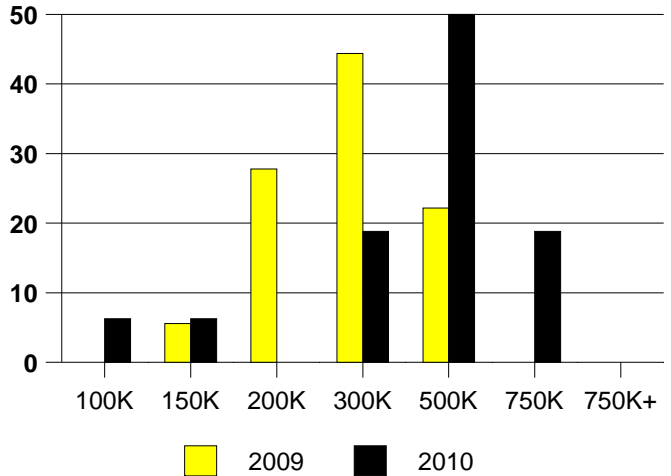
NTREIS Sold informaton as of 10/02/2010

	2009	2010
Total Sold Volume	\$ 6,925,290	\$ 5,843,940
Number of Sales	18	16
Median Sale Price	\$ 327,415	\$ 354,725

DAYS ON THE MARKET (ARGYLE)



ARGYLE MKT SHARE BY PRICE RANGE



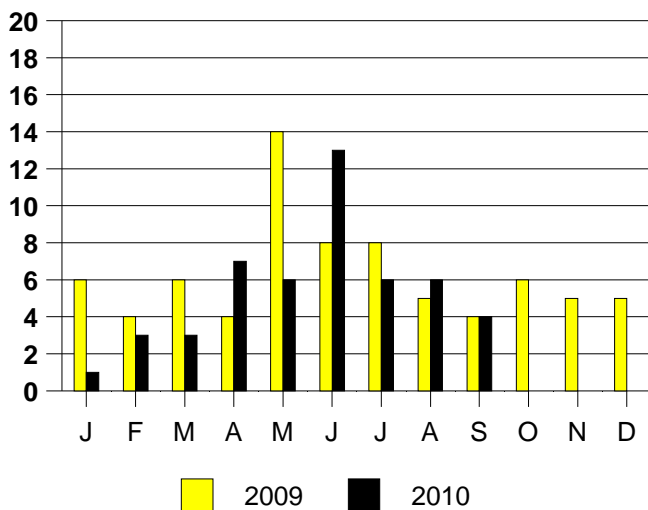
SALE/LIST PRICE RATIO

0K-100K	73.3%
101K-150K	88.8%
151K-200K	NONE
201K-300K	99.7%
301K-500K	96.4%
501K-750K	97.3%
751K+	NONE

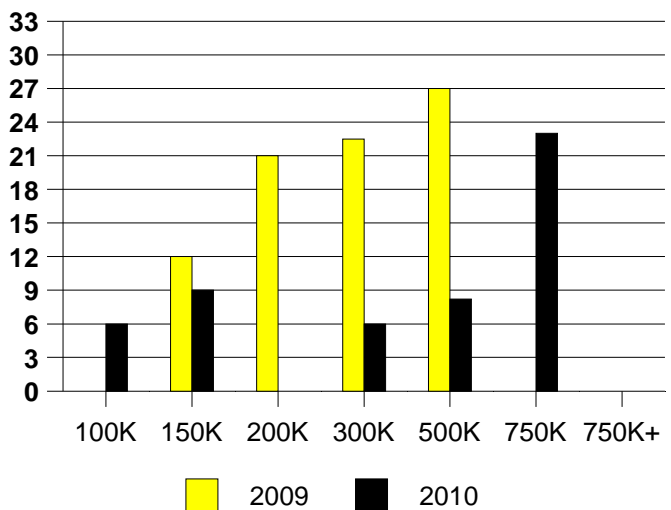
AVERAGE OVERPRICING
Original List Price to Sale Price

2009	5.3%
2010	8.9%

ARGYLE MONTHLY SALES



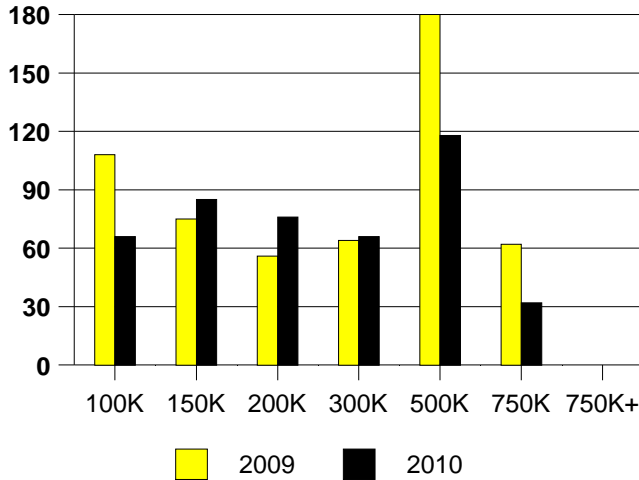
Inventory not shown where no sales
ARGYLE MONTHS OF INVENTORY



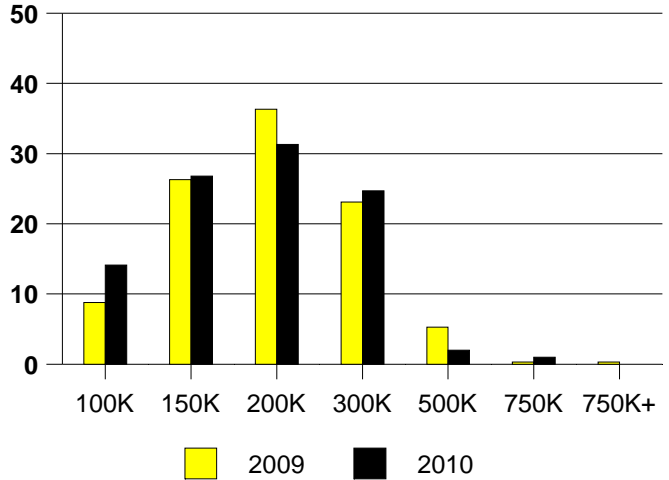
NTREIS Sold informaton as of 10/02/2010

	2009	2010
Total Sold Volume	\$ 61,791,690	\$ 34,537,656
Number of Sales	342	198
Median Sale Price	\$ 165,897	\$ 165,500

DAYS ON MARKET(CARROLLTON)



CARROLLTON MKT SHARE BY PRICE RANGE



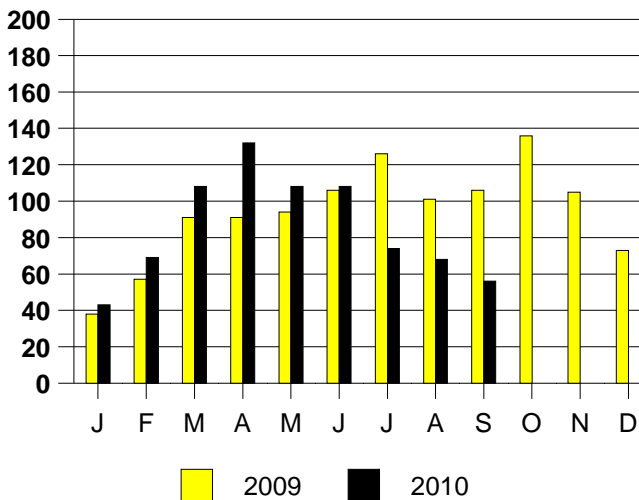
SALE/LIST PRICE RATIO

0K-100K	92.4%
101K-150K	97.5%
151K-200K	97.3%
201K-300K	96.8%
301K-500K	97.7%
501K-750K	97.3%
751K+	NONE

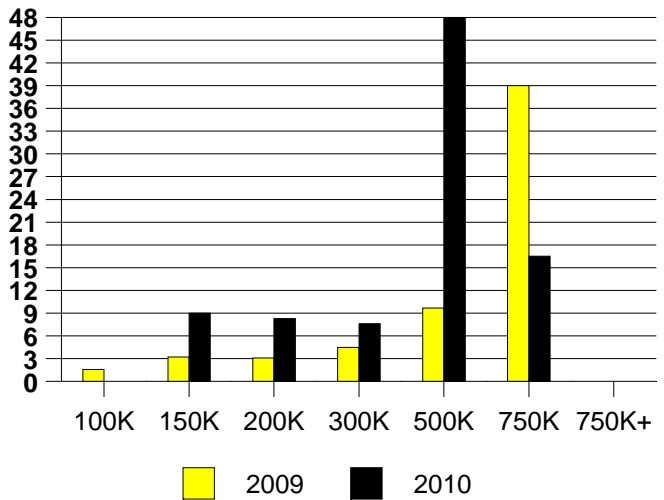
AVERAGE OVERPRICING
Original List Price to Sale Price

2009	6.4%
2010	7.6%

CARROLLTON MONTHLY SALES



CARROLLTON MONTHS OF INVENTORY

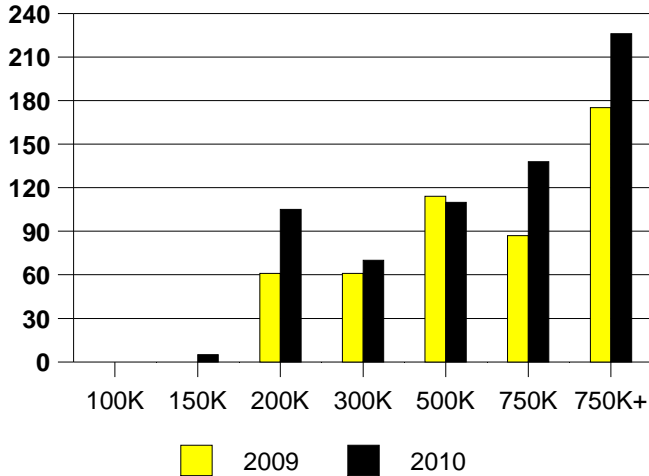


Inventory not shown where no sales

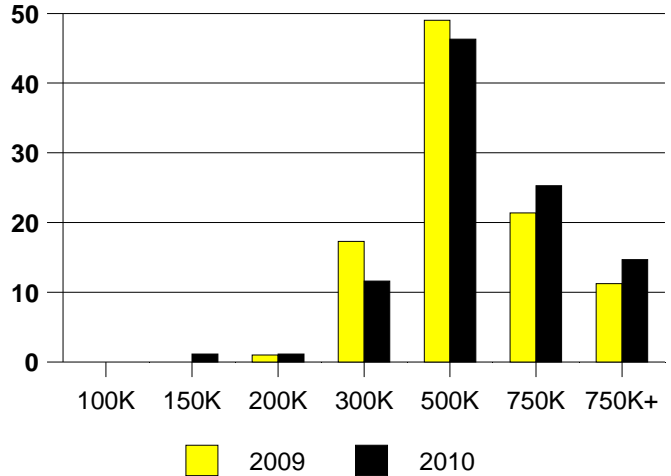
NTREIS Sold informaton as of 10/02/2010

	<u>2009</u>	<u>2010</u>
Total Sold Volume	\$ 48,556,500	\$ 48,597,400
Number of Sales	98	95
Median Sale Price	\$ 408,750	\$ 433,500

DAYS ON THE MARKET (COLLEYVILLE)



COLLEYVILLE MKT SHARE BY PRICE RANGE



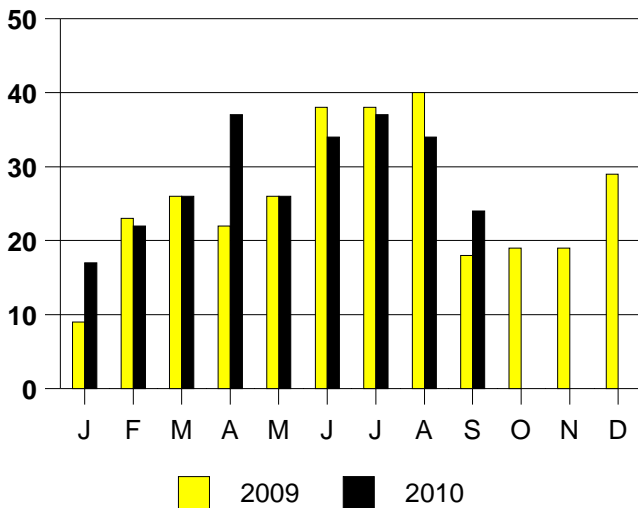
SALE/LIST PRICE RATIO

0K-100K	NONE
101K-150K	97.5%
151K-200K	100.0%
201K-300K	97.0%
301K-500K	96.4%
501K-750K	97.5%
751K+	96.4%

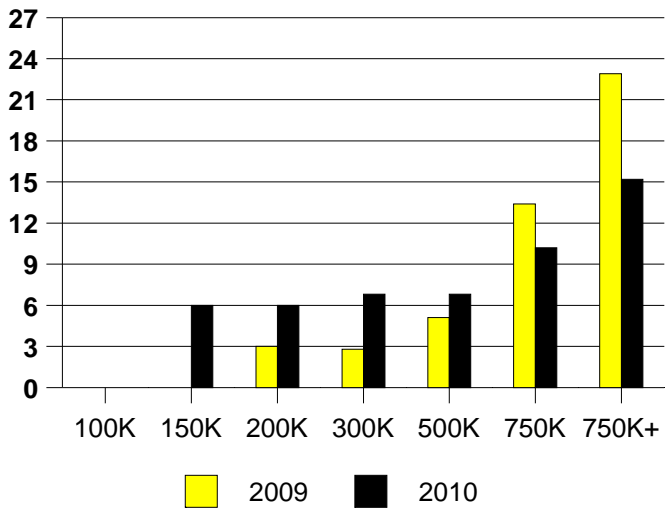
AVERAGE OVERPRICING
Original List Price to Sale Price

2009	7.4%
2010	9.0%

COLLEYVILLE MONTHLY SALES



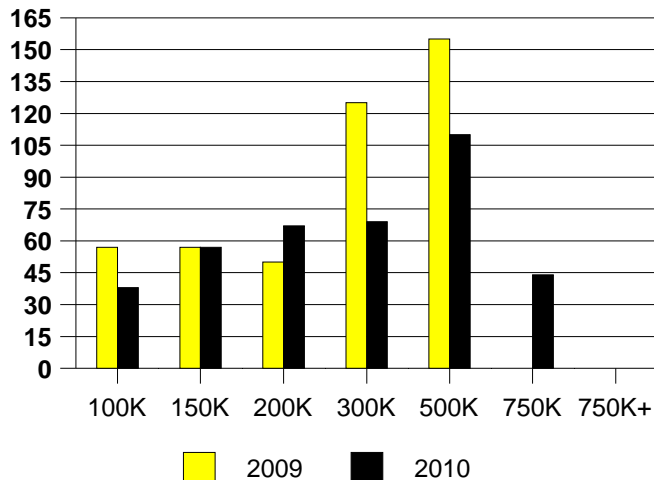
COLLEYVILLE MONTHS OF INVENTORY



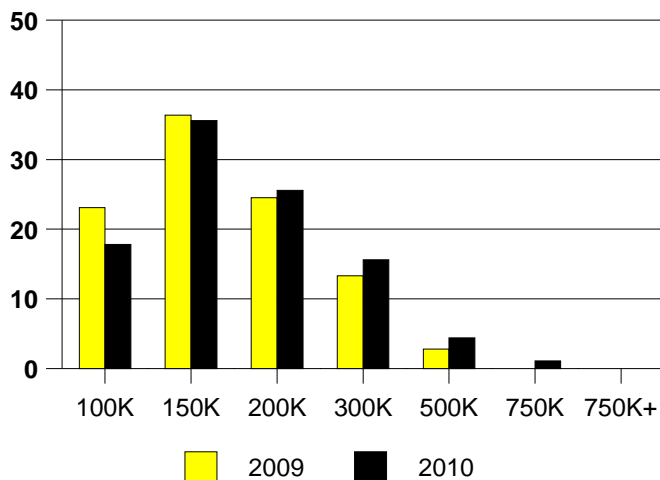
NTREIS Sold informaton as of 10/02/2010

	2009	2010
Total Sold Volume	\$ 21,334,808	\$ 14,711,820
Number of Sales	143	90
Median Sale Price	\$ 134,400	\$ 145,250

DAYS ON THE MARKET (COLONY)



COLONY MKT SHARE BY PRICE RANGE



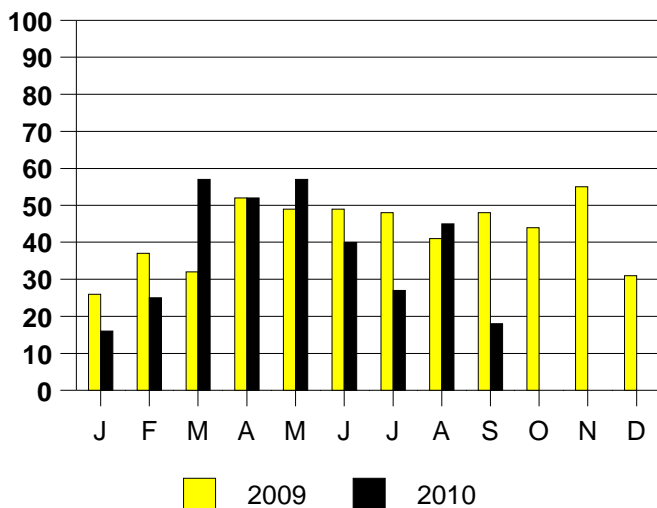
SALE/LIST PRICE RATIO

0K-100K	94.2%
101K-150K	97.5%
151K-200K	97.8%
201K-300K	98.4%
301K-500K	91.7%
501K-750K	78.5%
751K+	NONE

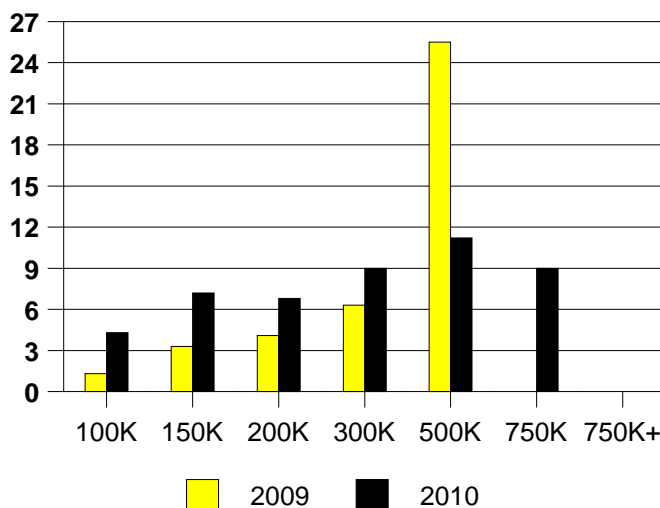
AVERAGE OVERPRICING
Original List Price to Sale Price

2009	3.9%
2010	6.9%

THE COLONY MONTHLY SALES



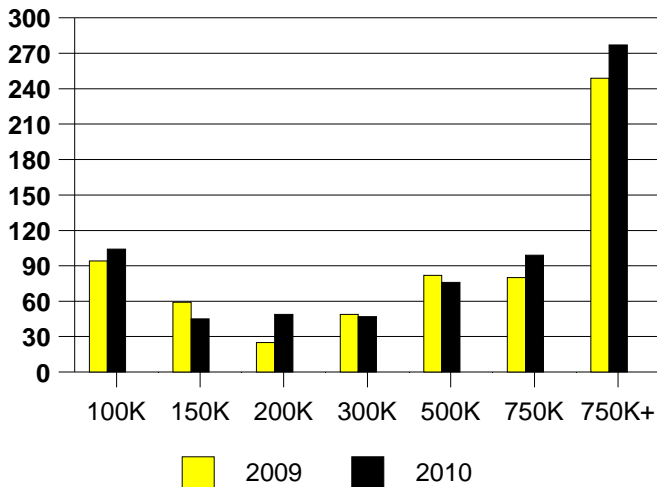
Inventory not shown where no sales
THE COLONY MONTHS OF INVENTORY



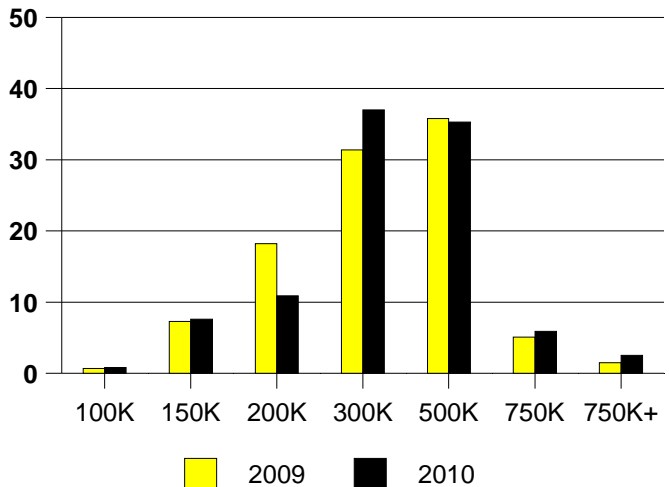
NTREIS Sold informaton as of 10/02/2010

	<u>2009</u>	<u>2010</u>
Total Sold Volume	\$ 41,019,228	\$ 38,077,100
Number of Sales	137	119
Median Sale Price	\$ 271,000	\$ 283,000

DAYS ON THE MARKET (COPPELL)



COPPELL MKT SHARE BY PRICE RANGE



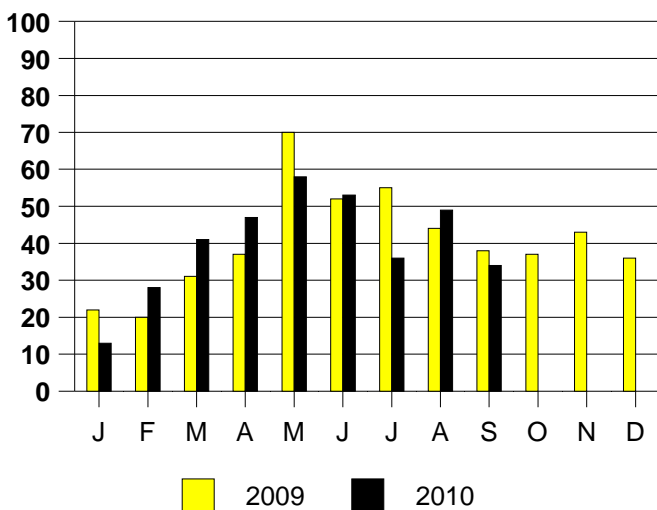
SALE/LIST PRICE RATIO

0K-100K	95.2%
101K-150K	95.3%
151K-200K	97.2%
201K-300K	96.8%
301K-500K	96.6%
501K-750K	96.5%
751K+	92.8%

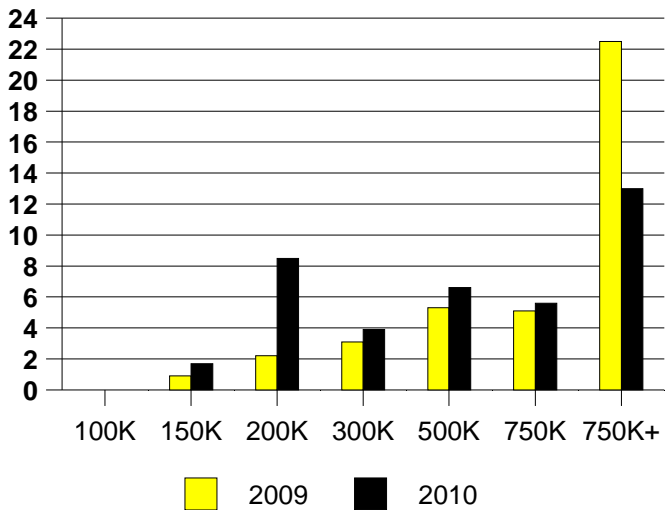
AVERAGE OVERPRICING
Original List Price to Sale Price

2009	5.3%
2010	6.2%

COPPELL MONTHLY SALES



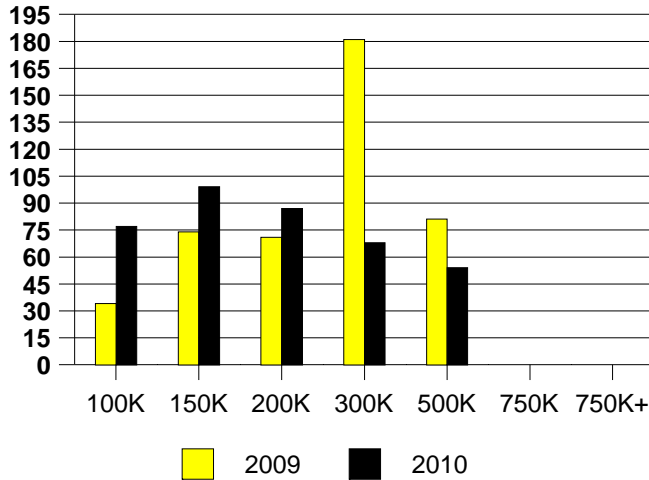
Inventory not shown where no sales
COPPELL MONTHS OF INVENTORY



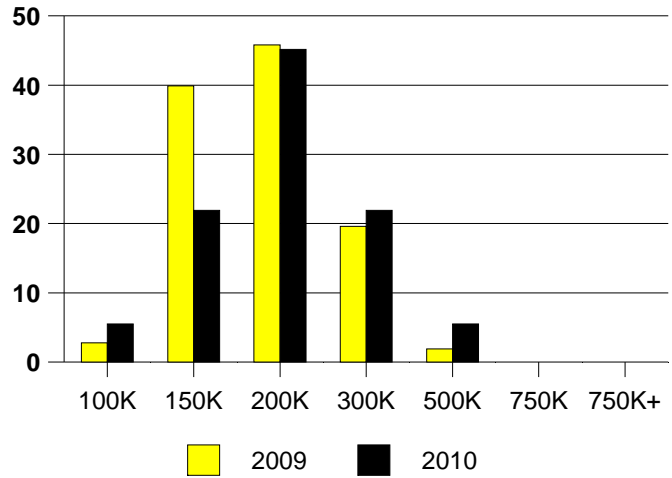
NTREIS Sold informaton as of 10/02/2010

	<u>2009</u>	<u>2010</u>
Total Sold Volume	\$ 18,797,054	\$ 13,363,218
Number of Sales	107	73
Median Sale Price	\$ 164,000	\$ 167,000

DAYS ON THE MARKET (CORINTH)



CORINTH MKT SHARE BY PRICE RANGE



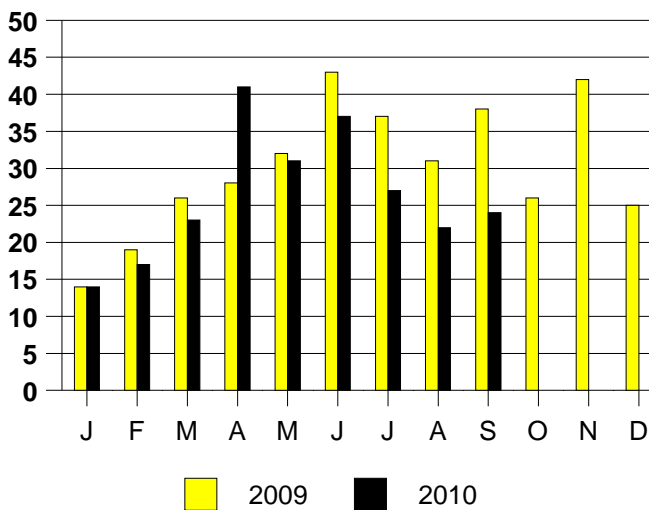
SALE/LIST PRICE RATIO

0K-100K	95.3%
101K-150K	98.0%
151K-200K	99.0%
201K-300K	99.0%
301K-500K	97.2%
501K-750K	NONE
751K+	NONE

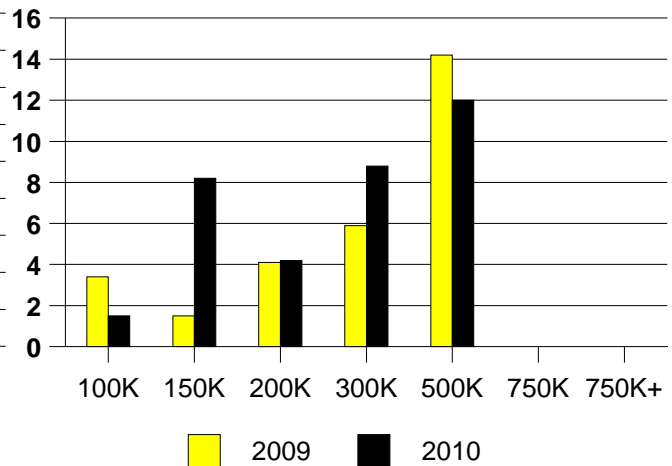
AVERAGE OVERPRICING
Original List Price to Sale Price

2009	4.5%
2010	5.7%

CORINTH MONTHLY SALES



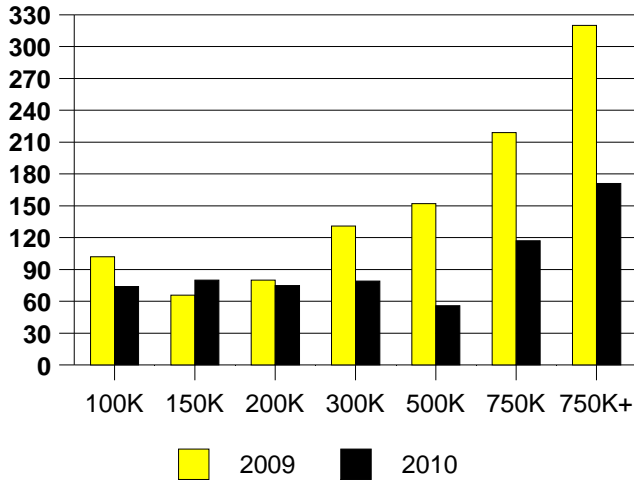
Inventory not shown where no sales
CORINTH MONTHS OF INVENTORY
2009 Inventory is Year End



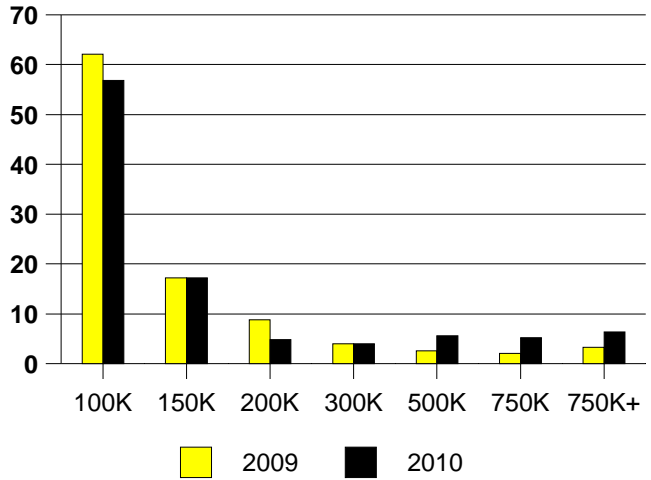
NTREIS Sold informaton as of 10/02/2010

	2009	2010
Total Sold Volume	\$ 59,695,548	\$ 51,066,832
Number of Sales	430	250
Median Sale Price	\$ 78,500	\$ 79,950

DAYS ON THE MARKET (DALLAS)



DALLAS MKT SHARE BY PRICE RANGE



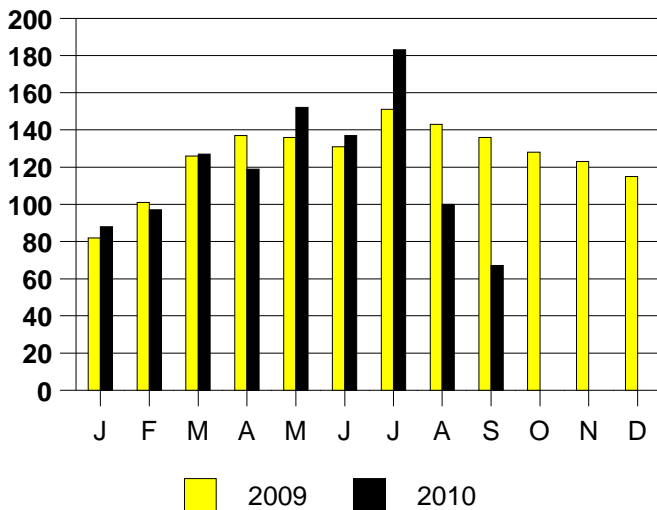
SALE/LIST PRICE RATIO

0K-100K	98.1%
101K-150K	98.7%
151K-200K	94.6%
201K-300K	99.1%
301K-500K	96.8%
501K-750K	94.2%
751K+	93.2%

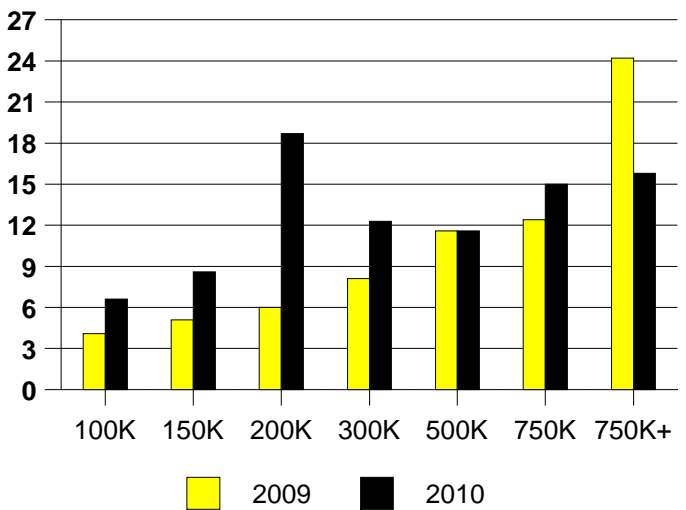
AVERAGE OVERPRICING
Original List Price to Sale Price

2009	11.2%
2010	9.5%

DALLAS MONTHLY SALES



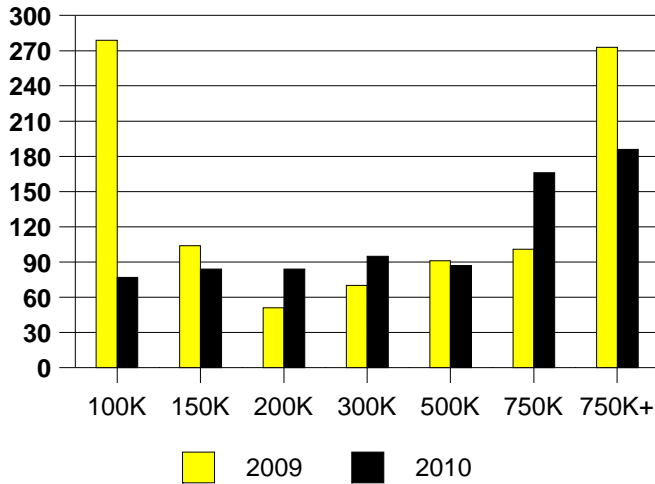
Inventory not shown where no sales
DALLAS MONTHS OF INVENTORY



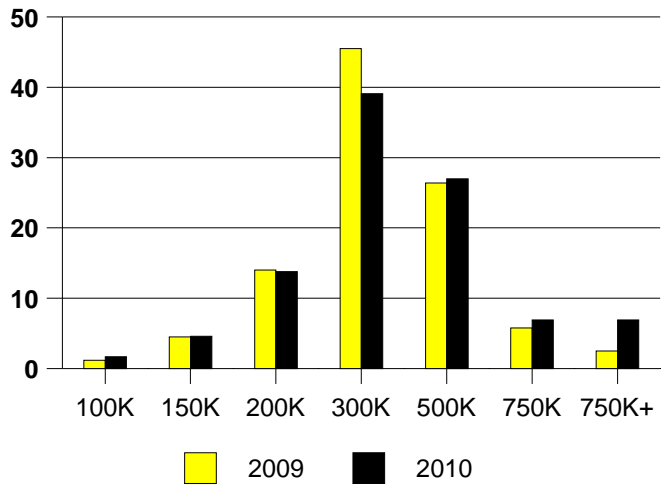
NTREIS Sold informaton as of 10/02/2010

	<u>2009</u>	<u>2010</u>
Total Sold Volume	\$ 76,771,728	\$ 62,042,364
Number of Sales	242	174
Median Sale Price	\$ 264,959	\$ 274,500

DAYS ON THE MARKET (AREA 10)



AREA 10 MKT SHARE BY PRICE RANGE



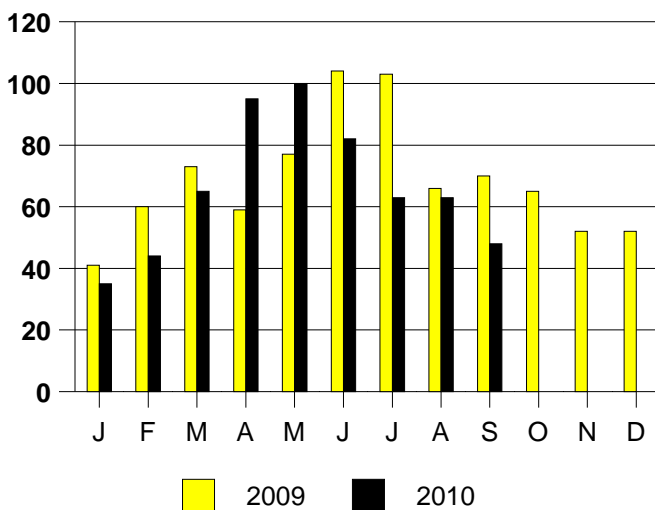
SALE/LIST PRICE RATIO

0K-100K	97.5%
101K-150K	91.7%
151K-200K	95.6%
201K-300K	96.3%
301K-500K	95.4%
501K-750K	96.2%
751K+	94.7%

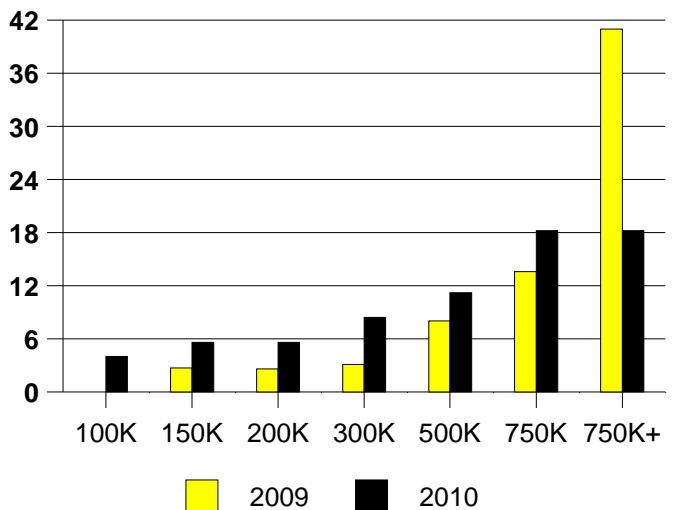
AVERAGE OVERPRICING
Original List Price to Sale Price

2009	8.0%
2010	9.5%

AREA 10 MONTHLY SALES

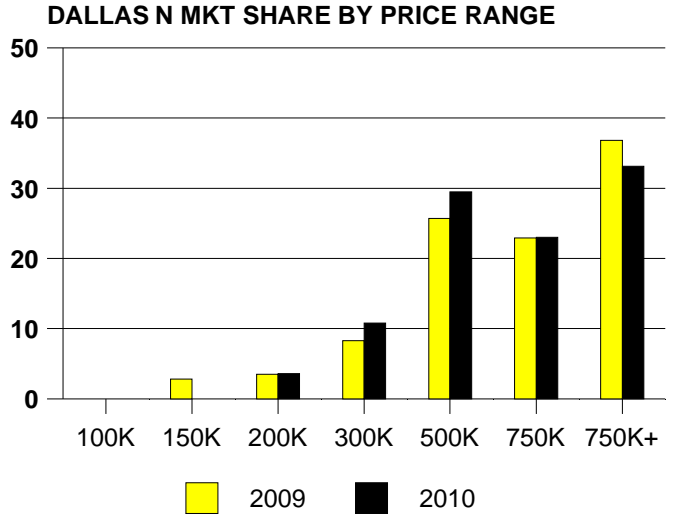
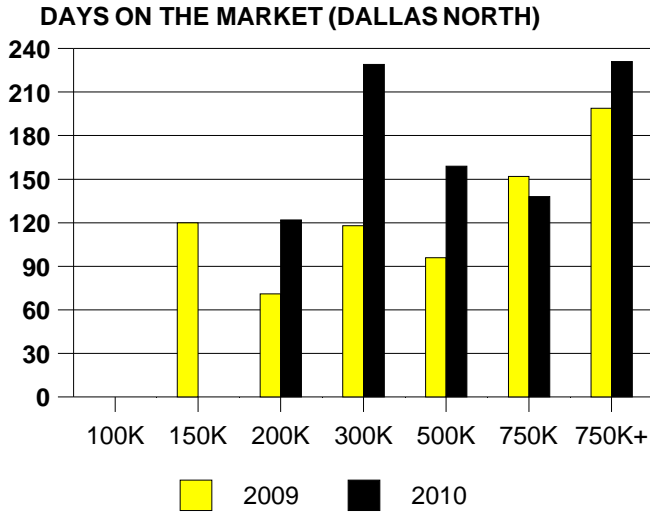


Inventory not shown where no sales
AREA 10 MONTHS OF INVENTORY



NTREIS Sold informaton as of 10/02/2010

	<u>2009</u>	<u>2010</u>
Total Sold Volume	\$ 118,324,984	\$ 110,339,840
Number of Sales	144	139
Median Sale Price	\$ 577,500	\$ 560,000

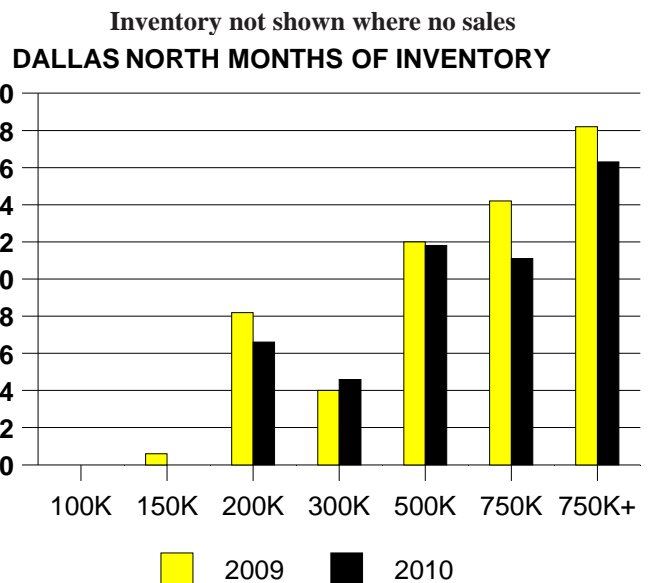
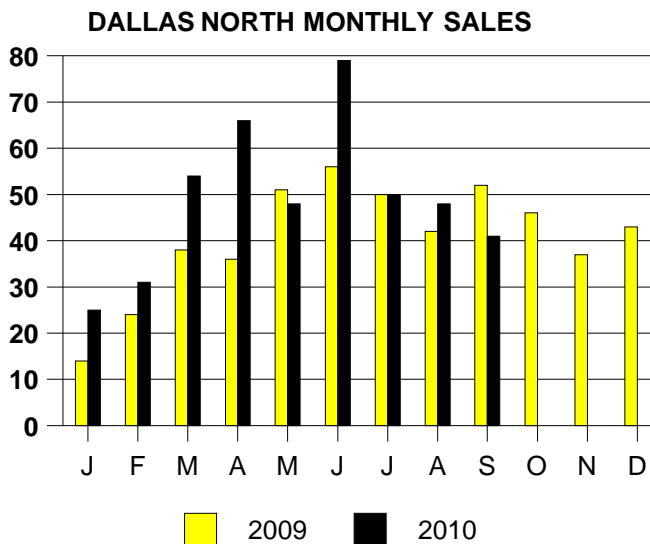


SALE/LIST PRICE RATIO

0K-100K	NONE
101K-150K	NONE
151K-200K	94.7%
201K-300K	91.0%
301K-500K	94.8%
501K-750K	94.8%
751K+	94.7%

AVERAGE OVERPRICING
Original List Price to Sale Price

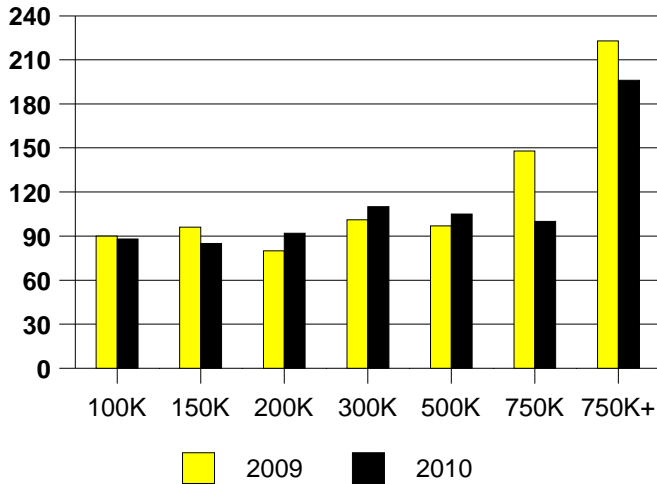
2009	12.7%
2010	16.0%



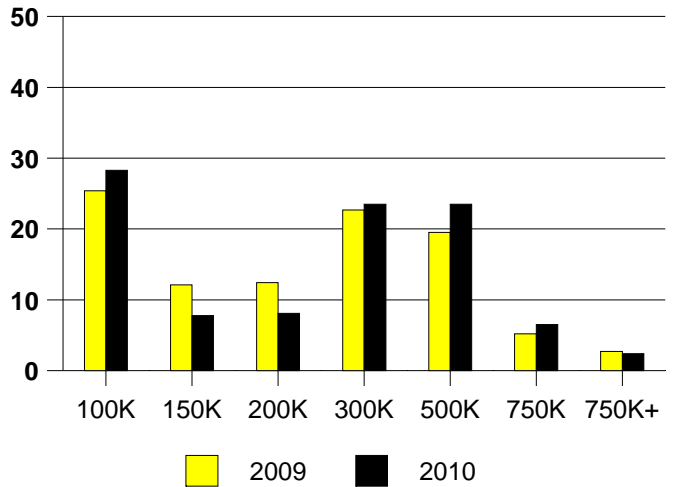
NTREIS Sold informaton as of 10/02/2010

	2009	2010
Total Sold Volume	\$ 136,432,672	\$ 91,855,624
Number of Sales	563	371
Median Sale Price	\$ 201,500	\$ 224,436

DAYS ON THE MARKET (DALLAS EAST)



DALLAS NE MKT SHARE BY PRICE RANGE



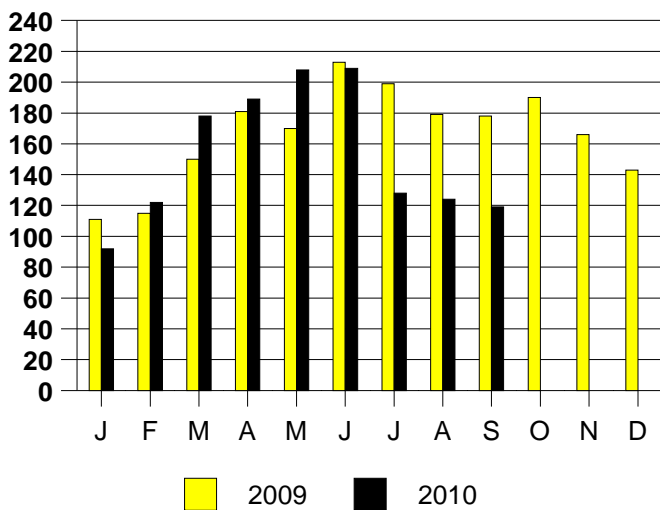
SALE/LIST PRICE RATIO

0K-100K	91.9%
101K-150K	96.2%
151K-200K	96.2%
201K-300K	95.8%
301K-500K	96.1%
501K-750K	96.4%
751K+	97.0%

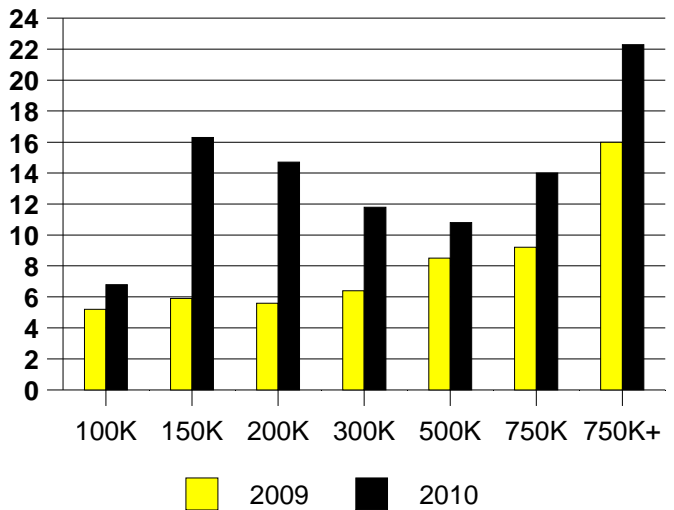
AVERAGE OVERPRICING
Original List Price to Sale Price

2009	9.9%
2010	16.4%

DALLAS EAST MONTHLY SALES



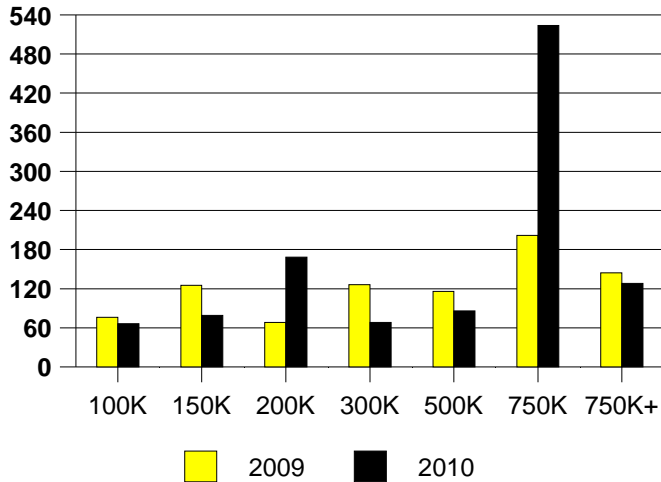
Inventory not shown where no sales
DALLAS EAST MONTHS OF INVENTORY



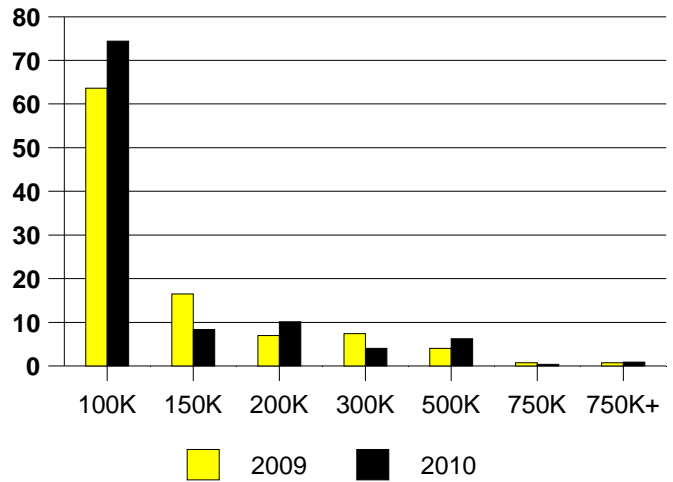
NTREIS Sold informaton as of 10/02/2010

	2009	2010
Total Sold Volume	\$ 30,571,544	\$ 22,402,284
Number of Sales	272	227
Median Sale Price	\$ 80,000	\$ 60,000

DAYS ON THE MARKET(AREA 14)



AREA 14 MKT SHARE BY PRICE RANGE



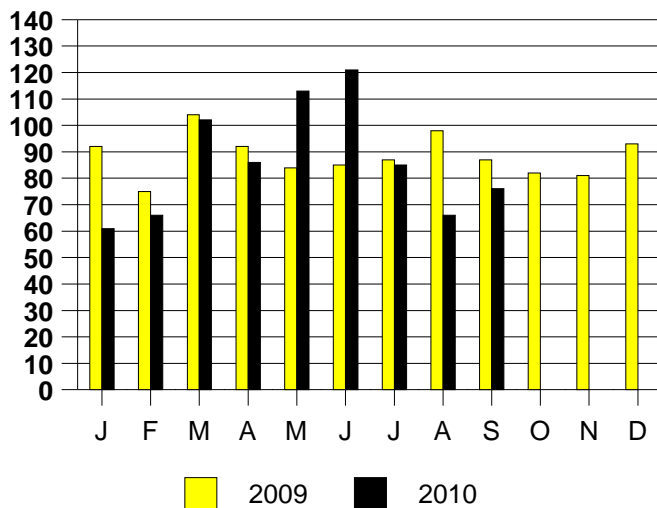
SALE/LIST PRICE RATIO

0K-100K	96.6%
101K-150K	98.5%
151K-200K	96.5%
201K-300K	96.1%
301K-500K	97.0%
501K-750K	96.0%
751K+	100.0%

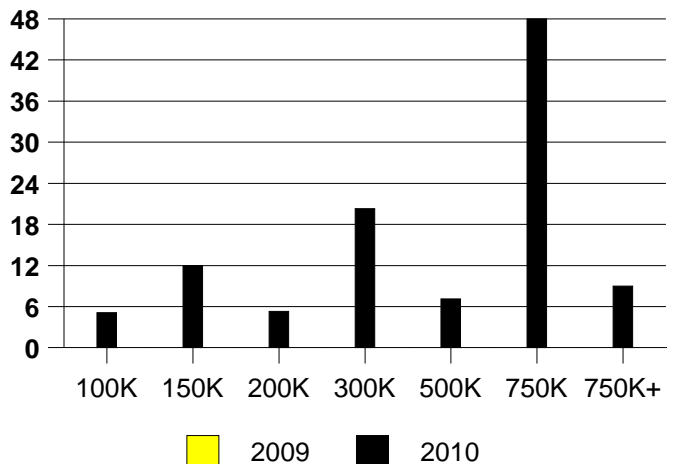
AVERAGE OVERPRICING
Original List Price to Sale Price

2009	11.5%
2010	16.3%

AREA 14 MONTHLY SALES



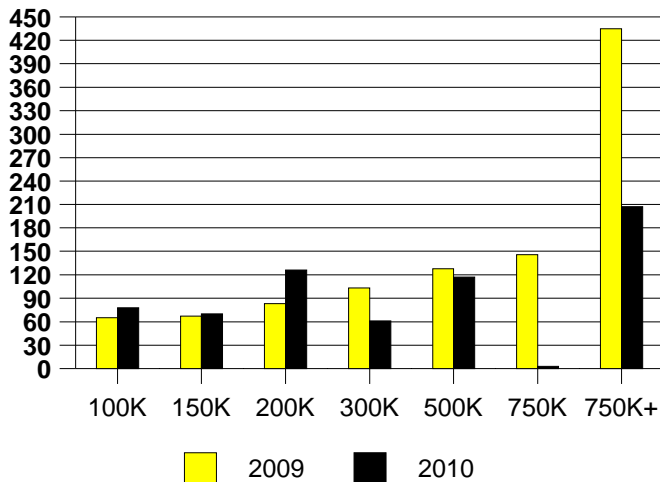
Inventory not shown where no sales
AREA 14 MONTHS OF INVENTORY
2009 Inventory Not Available



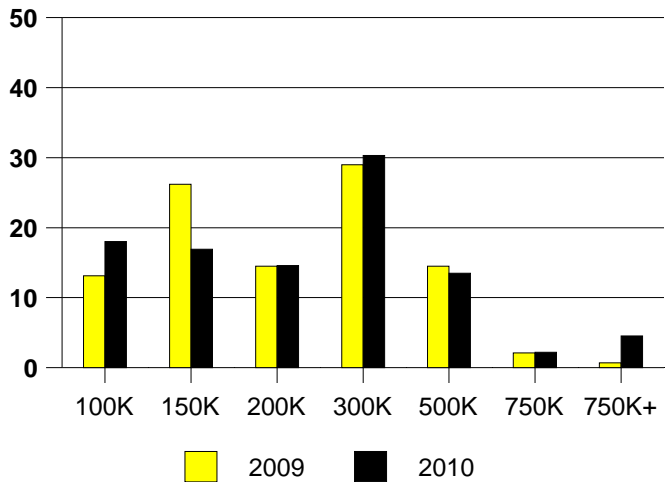
NTREIS Sold informaton as of 10/02/2010

	2009	2010
Total Sold Volume	\$ 30,331,250	\$ 20,673,168
Number of Sales	145	89
Median Sale Price	\$ 181,000	\$ 205,000

AREA 16 DAYS ON THE MARKET



% MARKET SHARE BY PRICE RANGE(AREA 16)



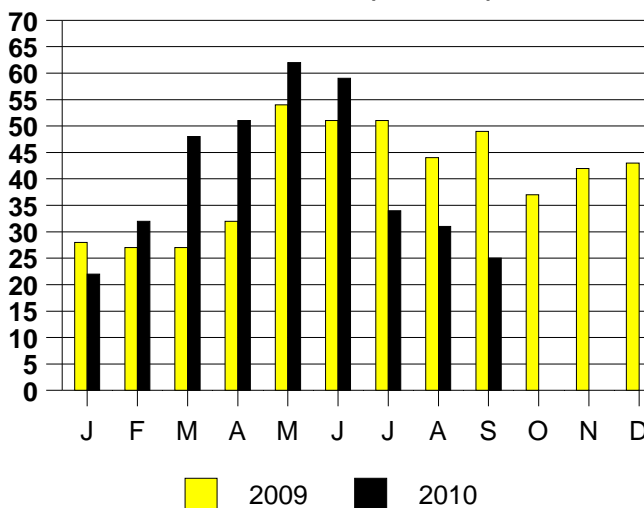
SALE/LIST PRICE RATIO

0K-100K	89.4%
101K-150K	96.8%
151K-200K	94.0%
201K-300K	96.2%
301K-500K	95.2%
501K-750K	96.1%
751K+	99.0%

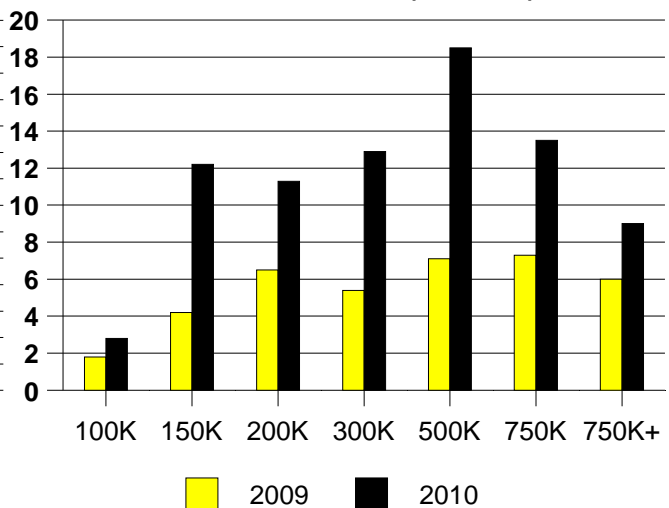
AVERAGE OVERPRICING
Original List Price to Sale Price

2009	10.1%
2010	11.6%

MONTHLY SALES (AREA 16)



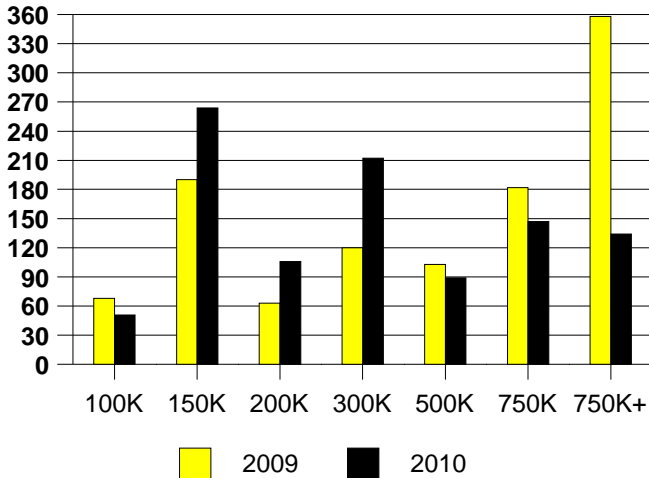
Inventory not shown where no sales
MONTHS OF INVENTORY(AREA 16)



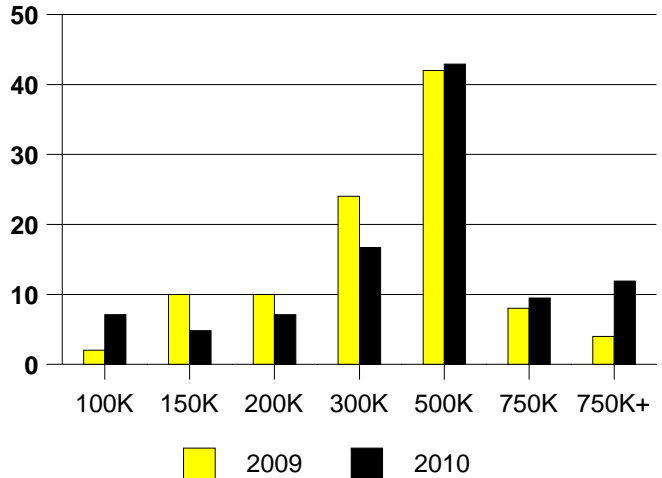
NTREIS Sold informaton as of 10/02/2010

	2009	2010
Total Sold Volume	\$ 16,333,815	\$ 17,677,856
Number of Sales	50	42
Median Sale Price	\$ 320,000	\$ 354,600

DAYS ON THE MARKET (DALLAS OAK LAWN)



DALLAS NE MKT SHARE BY PRICE RANGE



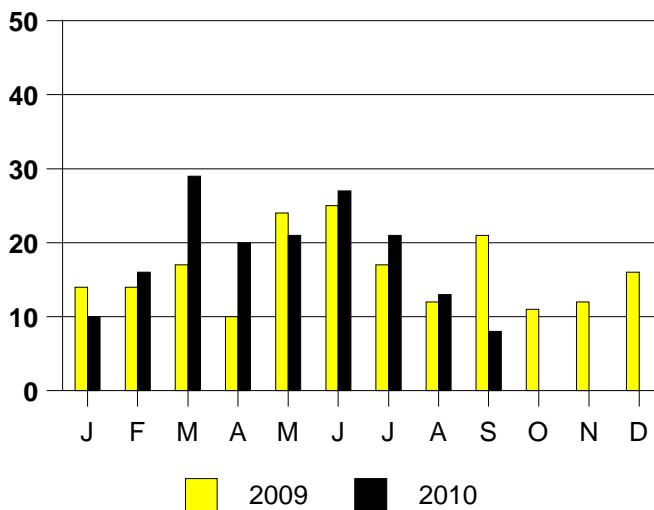
SALE/LIST PRICE RATIO

0K-100K	92.7%
101K-150K	95.6%
151K-200K	92.8%
201K-300K	98.0%
301K-500K	97.3%
501K-750K	95.1%
751K+	93.5%

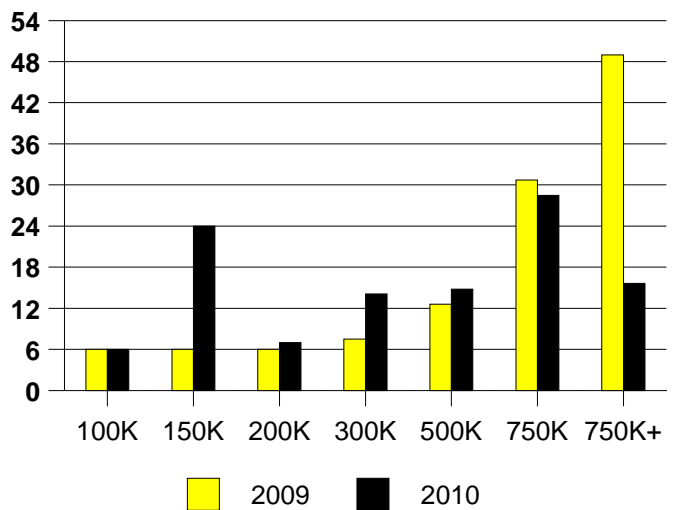
AVERAGE OVERPRICING
Original List Price to Sale Price

2009	9.8%
2010	8.0%

DALLAS OAKLAWN MONTHLY SALES



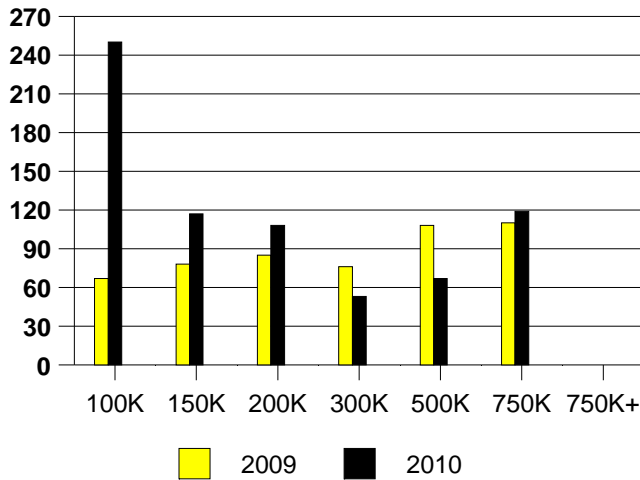
DALLAS OAKLAWN MONTHS OF INVENTORY



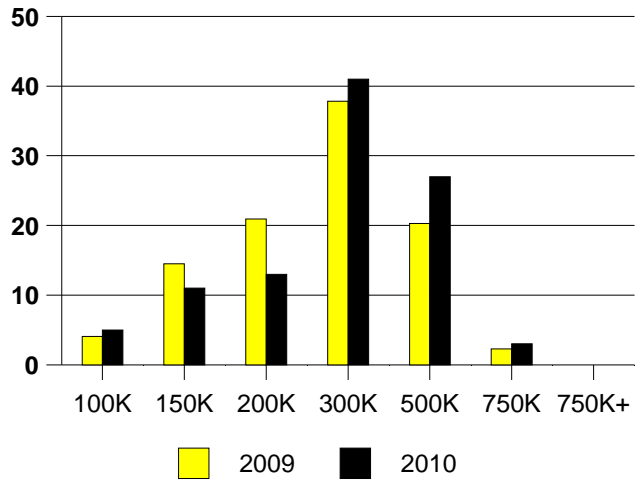
NTREIS Sold informaton as of 10/02/2010

	<u>2009</u>	<u>2010</u>
Total Sold Volume	\$ 41,584,432	\$ 26,200,272
Number of Sales	172	100
Median Sale Price	\$ 227,500	\$ 260,000

DAYS ON THE MARKET (DALLAS NE)



DALLAS NE MKT SHARE BY PRICE RANGE



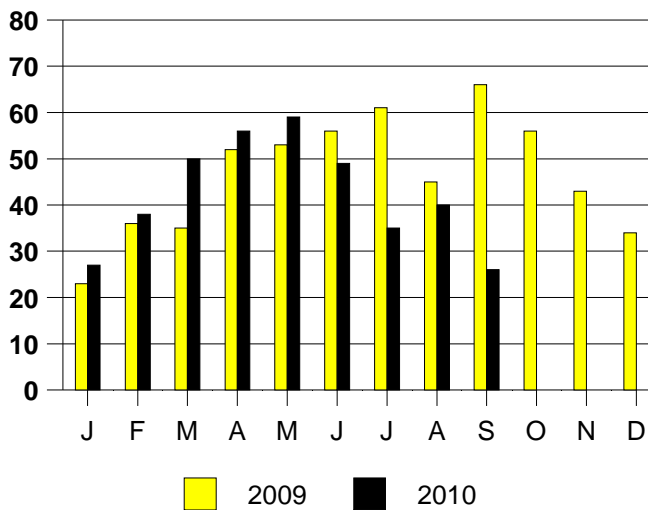
SALE/LIST PRICE RATIO

0K-100K	89.3%
101K-150K	93.2%
151K-200K	96.8%
201K-300K	97.2%
301K-500K	97.9%
501K-750K	96.0%
751K+	NONE

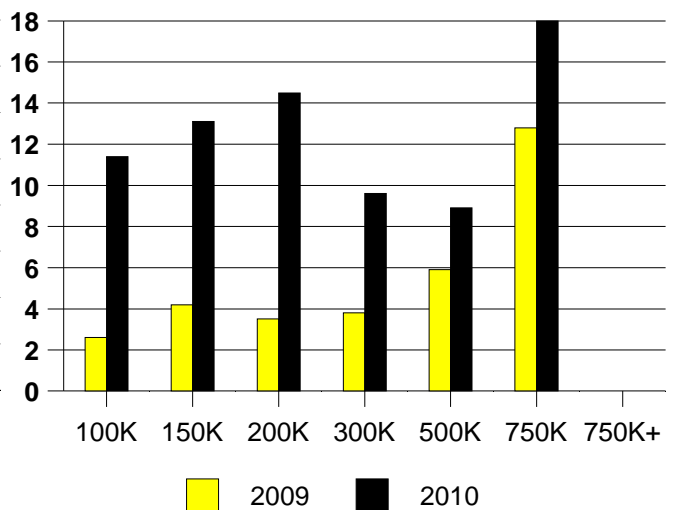
AVERAGE OVERPRICING
Original List Price to Sale Price

2009	7.7%
2010	7.9%

DALLAS NE MONTHLY SALES



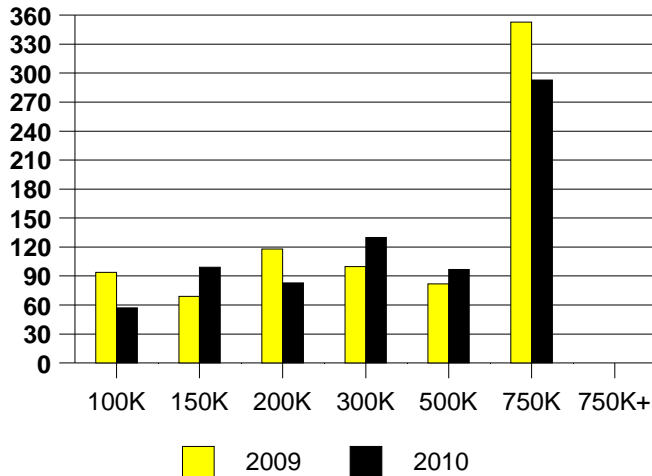
DALLAS NE MONTHS OF INVENTORY



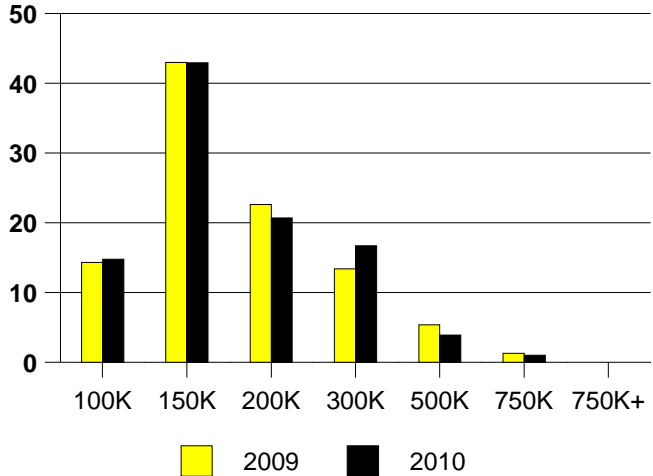
NTREIS Sold informaton as of 10/02/2010

	2009	2010
Total Sold Volume	\$ 51,881,024	\$ 32,571,252
Number of Sales	314	203
Median Sale Price	\$ 144,900	\$ 145,000

DAYS ON THE MARKET (DENTON)



DENTON MARKET SHARE BY PRICE RANGE



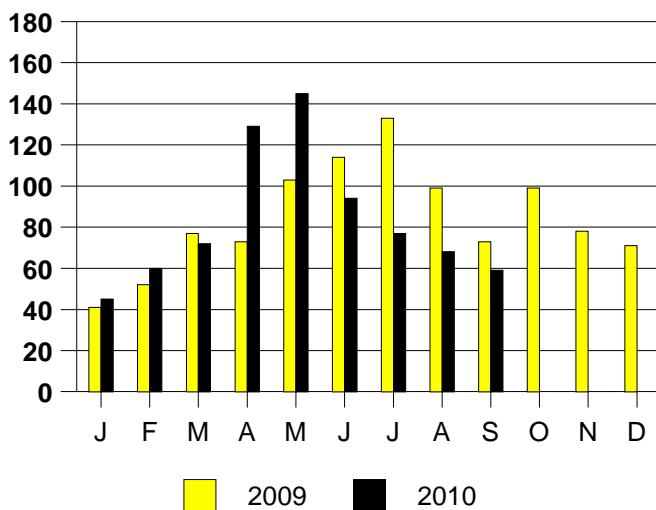
SALE/LIST PRICE RATIO

0K-100K	96.8%
101K-150K	96.8%
151K-200K	98.2%
201K-300K	97.0%
301K-500K	95.4%
501K-750K	97.0%
751K+	NONE

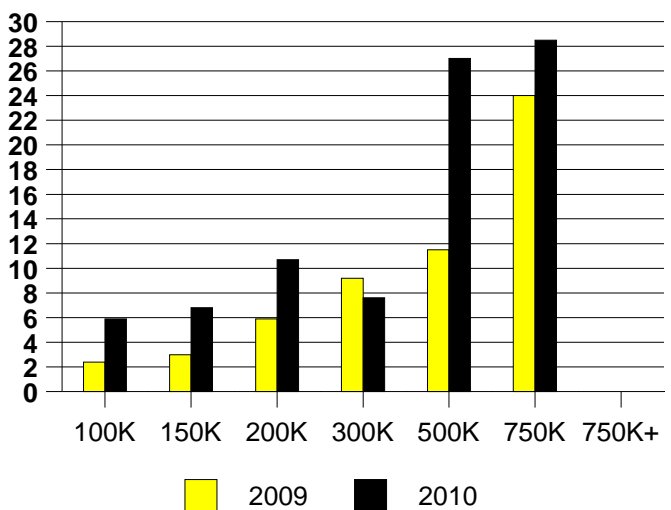
AVERAGE OVERPRICING
Original List Price to Sale Price

2009	5.8%
2010	6.5%

DENTON MONTHLY SALES



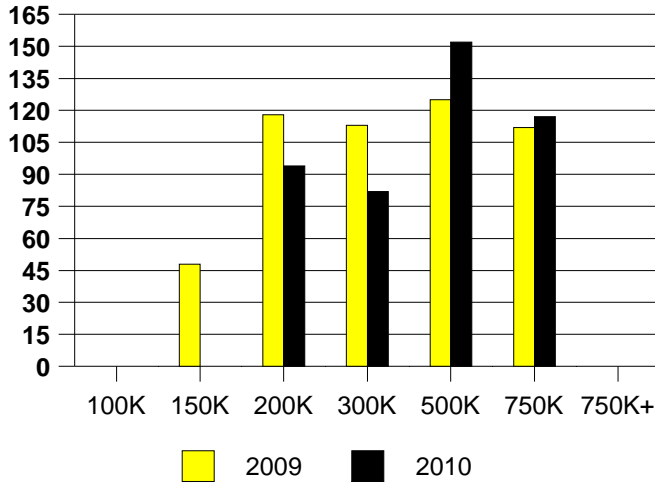
DENTON MONTHS OF INVENTORY



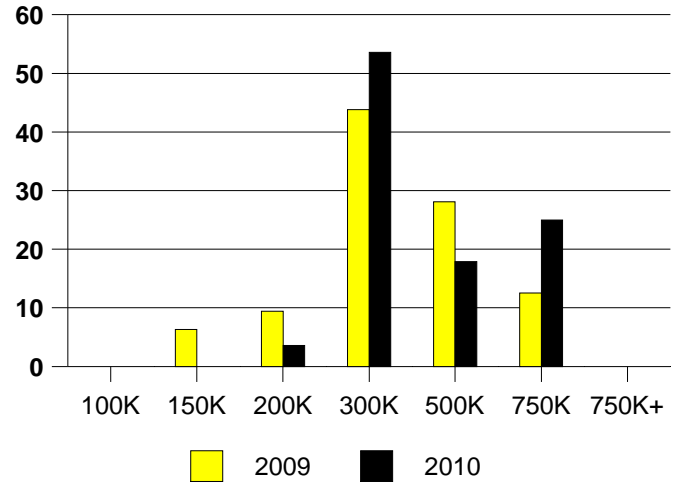
NTREIS Sold informaton as of 10/02/2010

	<u>2009</u>	<u>2010</u>
Total Sold Volume	\$ 10,090,410	\$ 9,831,870
Number of Sales	32	28
Median Sale Price	\$ 270,000	\$ 286,250

DAYS ON THE MARKET (FAIRVIEW)



FAIRVIEW MKT SHARE BY PRICE RANGE



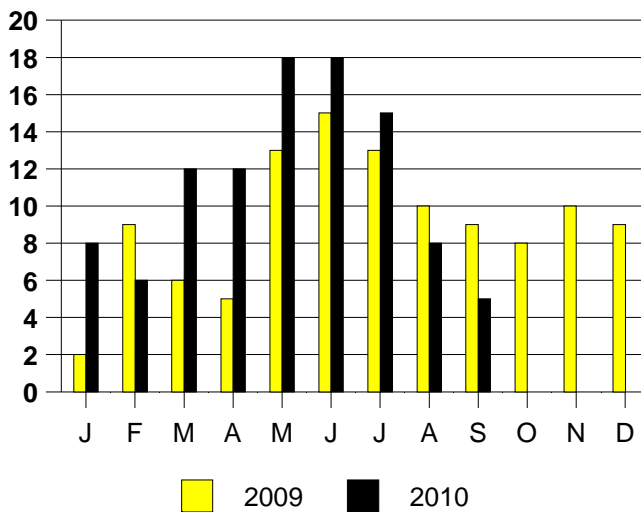
SALE/LIST PRICE RATIO

0K-100K	NONE
101K-150K	NONE
151K-200K	99.6%
201K-300K	94.6%
301K-500K	97.3%
501K-750K	94.3%
751K+	NONE

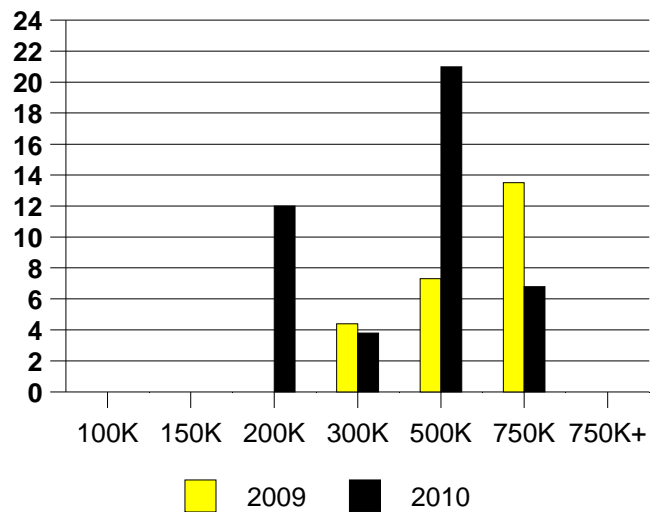
AVERAGE OVERPRICING
Original List Price to Sale Price

2009	12.2%
2010	10.2%

FAIRVIEW MONTHLY SALES



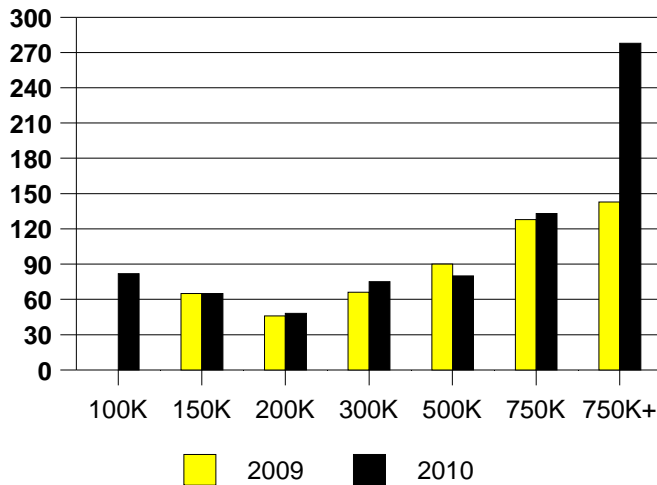
Inventory not shown where no sales
FAIRVIEW MONTHS OF INVENTORY



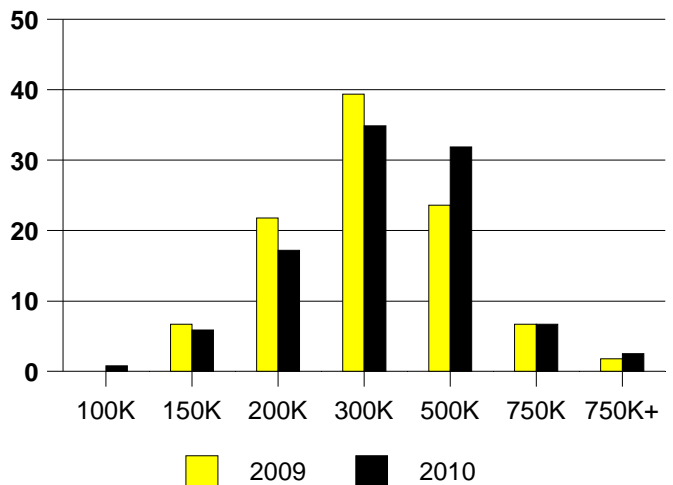
NTREIS Sold informaton as of 10/02/2010

	2009	2010
Total Sold Volume	\$ 94,903,592	\$ 73,603,792
Number of Sales	330	238
Median Sale Price	\$ 255,000	\$ 272,000

DAYS ON THE MARKET (FLOWER MOUND)



FLOWER MOUND MKT SHARE BY PRICE



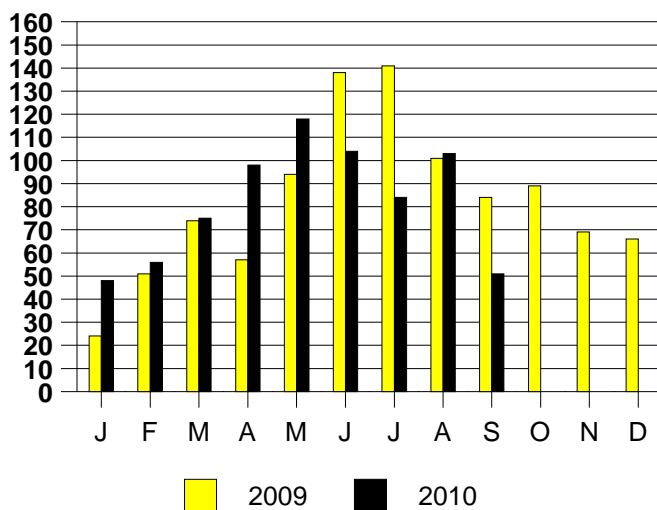
SALE/LIST PRICE RATIO

0K-100K	86.0%
101K-150K	97.5%
151K-200K	97.7%
201K-300K	97.7%
301K-500K	97.7%
501K-750K	99.1%
751K+	95.6%

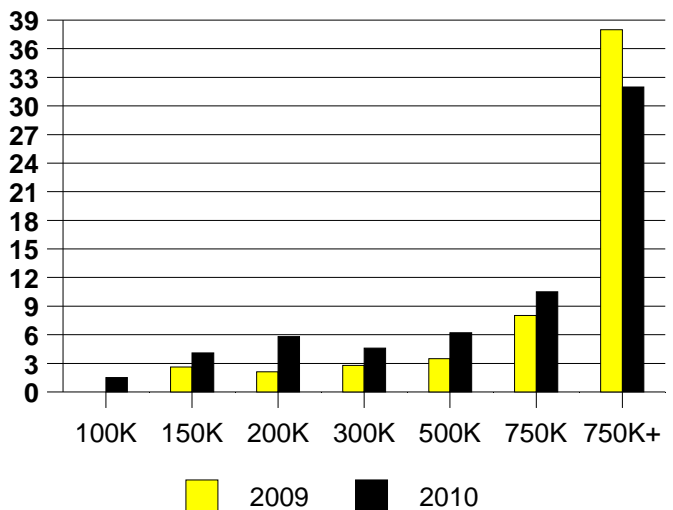
AVERAGE OVERPRICING
Original List Price to Sale Price

2009	4.9%
2010	5.8%

FLOWER MOUND MONTHLY SALES



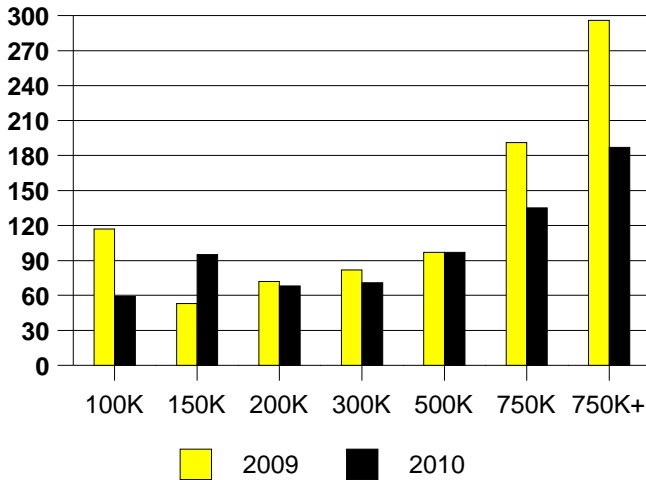
FLOWER MOUND MONTHS OF INVENTORY



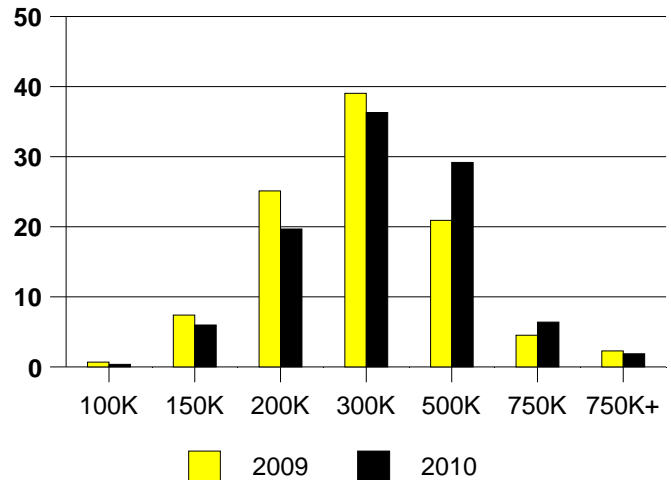
NTREIS Sold informaton as of 10/02/2010

	2009	2010
Total Sold Volume	\$ 204,443,792	\$ 139,693,168
Number of Sales	728	466
Median Sale Price	\$ 235,000	\$ 260,750

DAYS ON MARKET(FRISCO)



FRISCO MKT SHARE BY PRICE RANGE



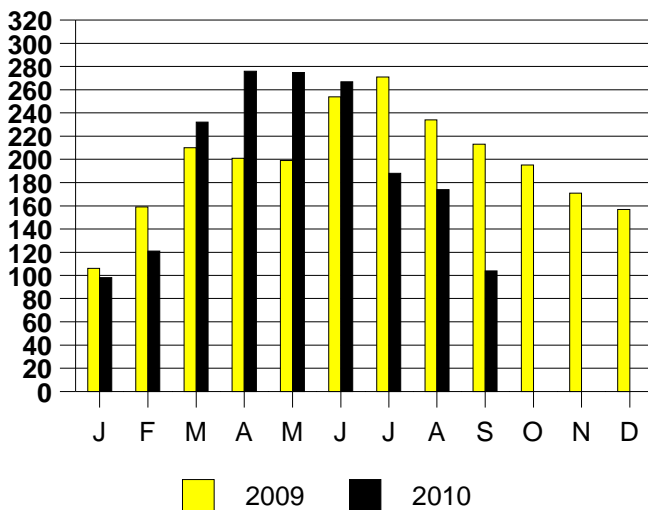
SALE/LIST PRICE RATIO

0K-100K	85.1%
101K-150K	96.1%
151K-200K	96.6%
201K-300K	97.1%
301K-500K	96.0%
501K-750K	95.9%
751K+	95.9%

AVERAGE OVERPRICING
Original List Price to Sale Price

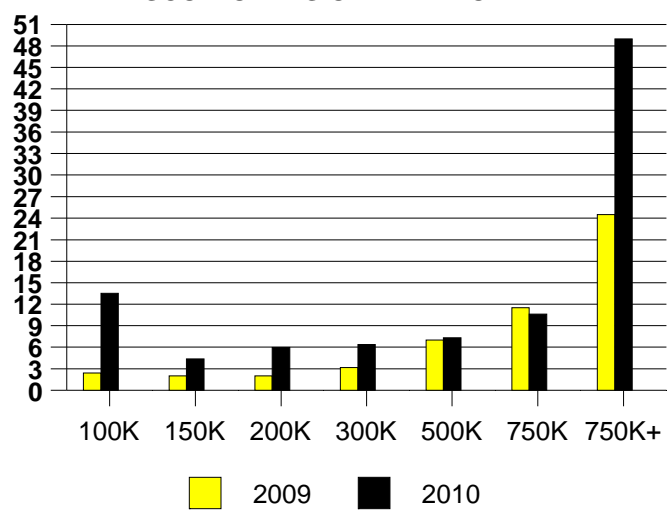
2009	7.1%
2010	7.4%

FRISCO MONTHLY SALES



Inventory not shown where no sales

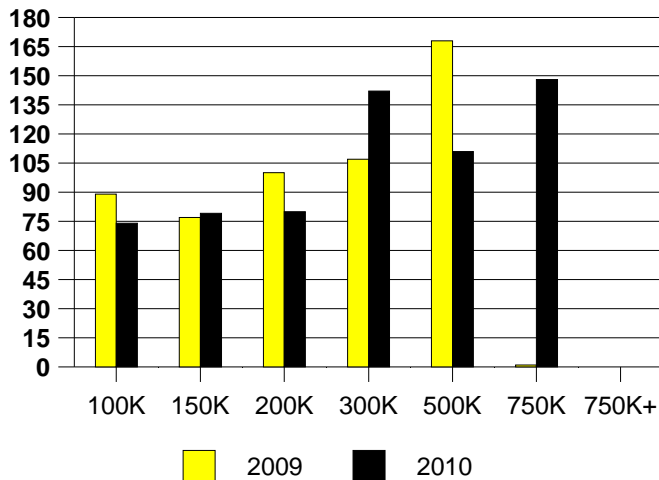
FRISCO MONTHS OF INVENTORY



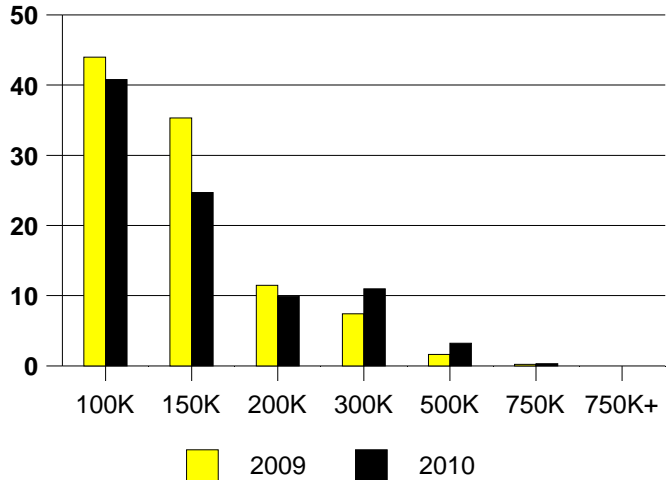
NTREIS Sold informaton as of 10/02/2010

	<u>2009</u>	<u>2010</u>
Total Sold Volume	\$ 66,030,396	\$ 45,554,392
Number of Sales	555	372
Median Sale Price	\$ 109,000	\$ 99,500

DAYS ON THE MARKET (GARLAND)



GARLAND MKT SHARE BY PRICE RANGE



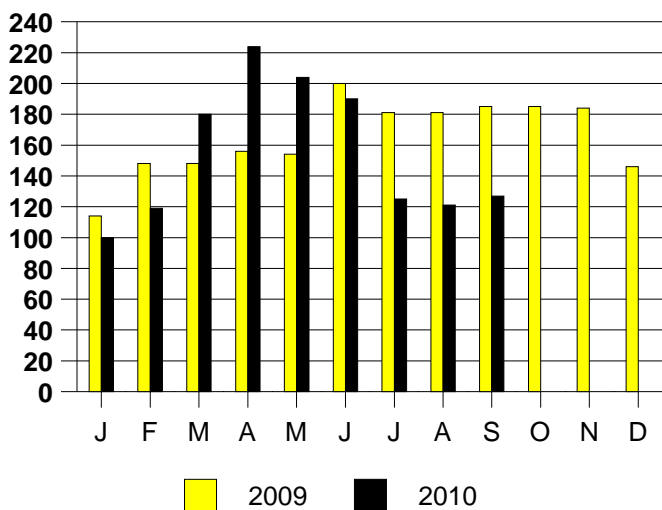
SALE/LIST PRICE RATIO

0K-100K	94.7%
101K-150K	97.6%
151K-200K	97.2%
201K-300K	96.2%
301K-500K	94.2%
501K-750K	93.1%
751K+	NONE

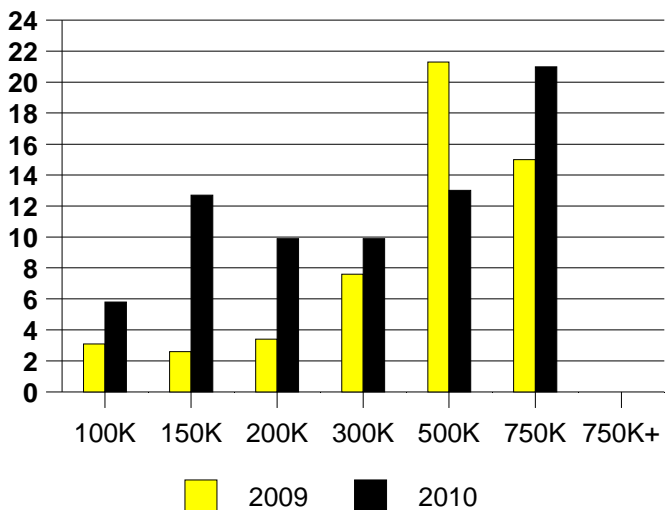
AVERAGE OVERPRICING
Original List Price to Sale Price

2009	6.9%
2010	11.9%

GARLAND MONTHLY SALES



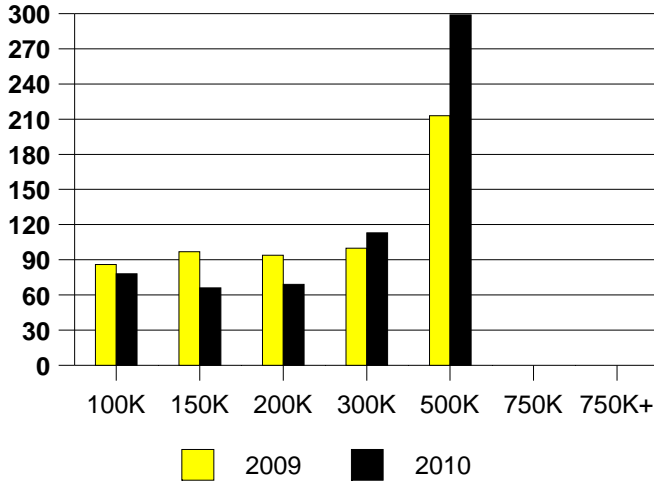
Inventory not shown where no sales
GARLAND MONTHS OF INVENTORY



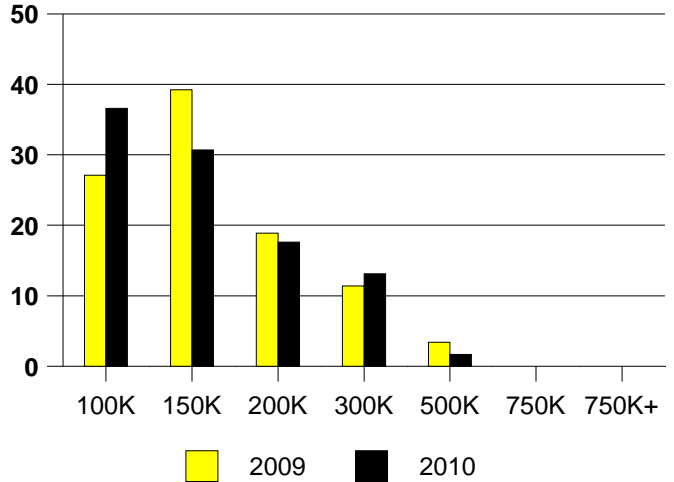
NTREIS Sold informaton as of 10/02/2010

	<u>2009</u>	<u>2010</u>
Total Sold Volume	\$58,352,600	\$ 38,409,608
Number of Sales	413	290
Median Sale Price	\$ 126,321	\$ 123,000

DAYS ON THE MARKET (GRAND PRAIRIE)



GRAND PRAIRIE MKT SHARE BY PRICE RANGE



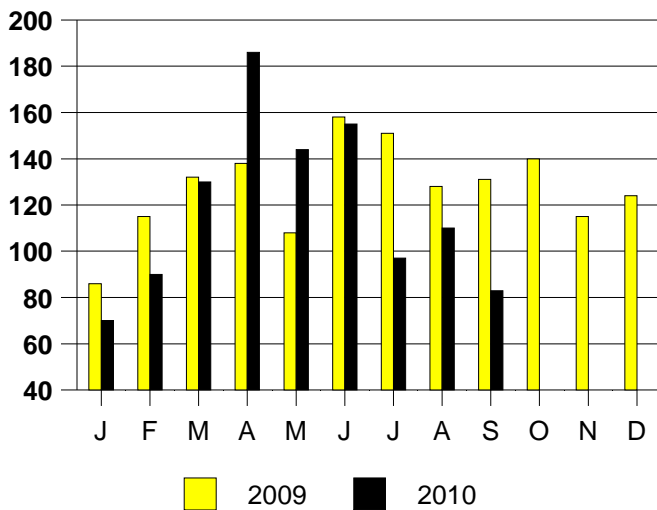
SALE/LIST PRICE RATIO

0K-100K	97.3%
101K-150K	98.8%
151K-200K	97.9%
201K-300K	95.9%
301K-500K	94.9%
501K-750K	NONE
751K+	NONE

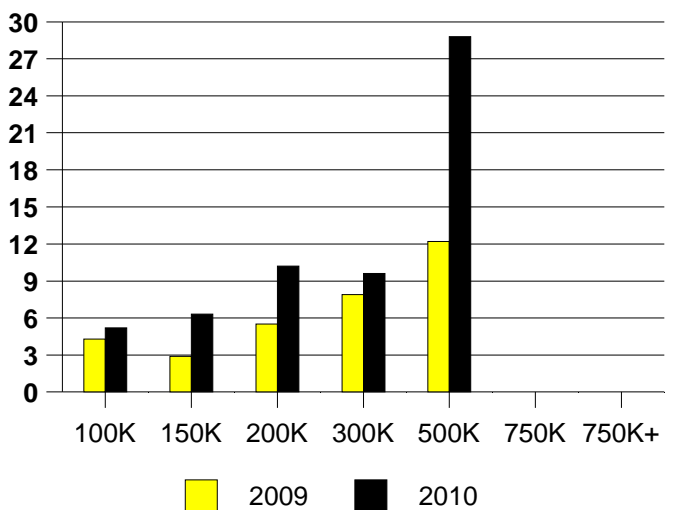
AVERAGE OVERPRICING
Original List Price to Sale Price

2009	8.2%
2010	8.0%

GRAND PRAIRIE MONTHLY SALES



GRAND PRAIRIE MONTHS OF INVENTORY

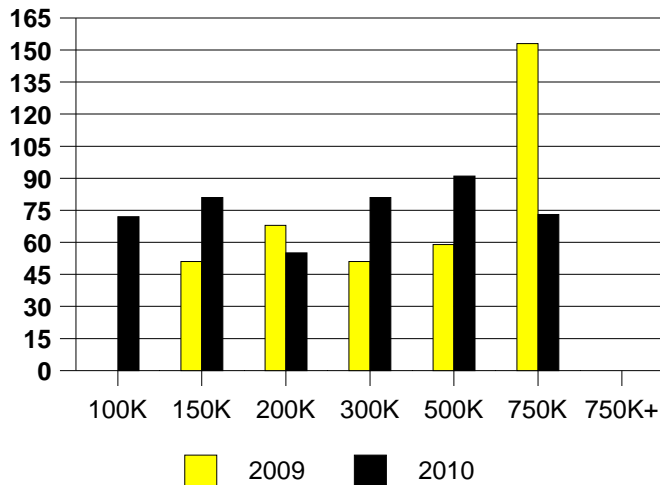


Inventory not shown where no sales

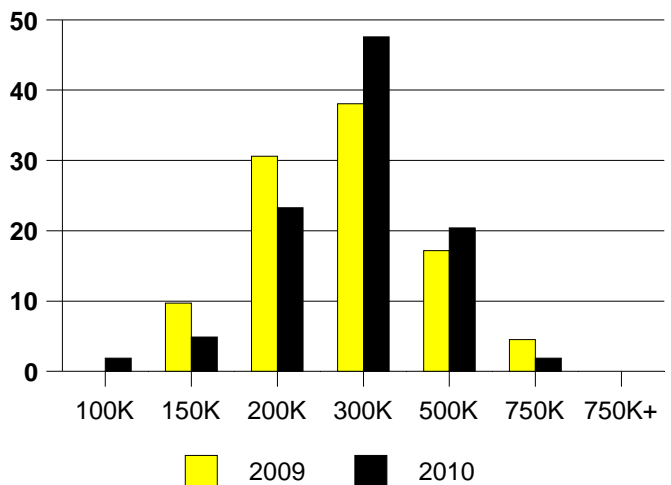
NTREIS Sold informaton as of 10/02/2010

	<u>2009</u>	<u>2010</u>
Total Sold Volume	\$ 33,930,852	\$ 25,970,288
Number of Sales	134	103
Median Sale Price	\$ 224,950	\$ 240,500

DAYS ON THE MARKET (GRAPEVINE)



GRAPEVINE MKT SHARE BY PRICE RANGE



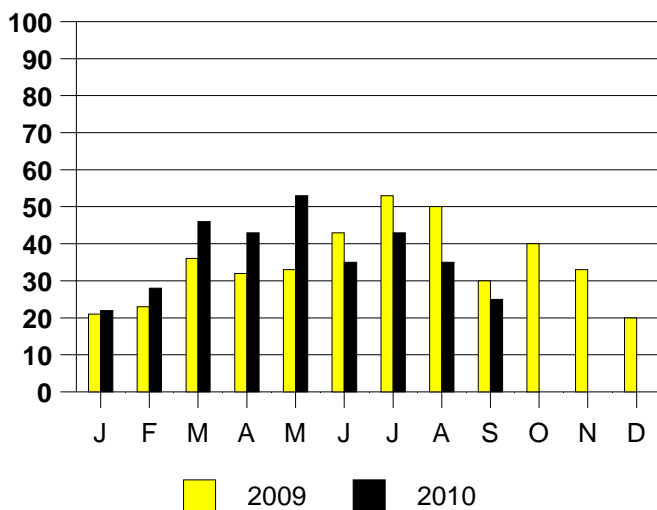
SALE/LIST PRICE RATIO

0K-100K	84.7%
101K-150K	99.2%
151K-200K	98.8%
201K-300K	96.8%
301K-500K	95.6%
501K-750K	96.7%
751K+	NONE

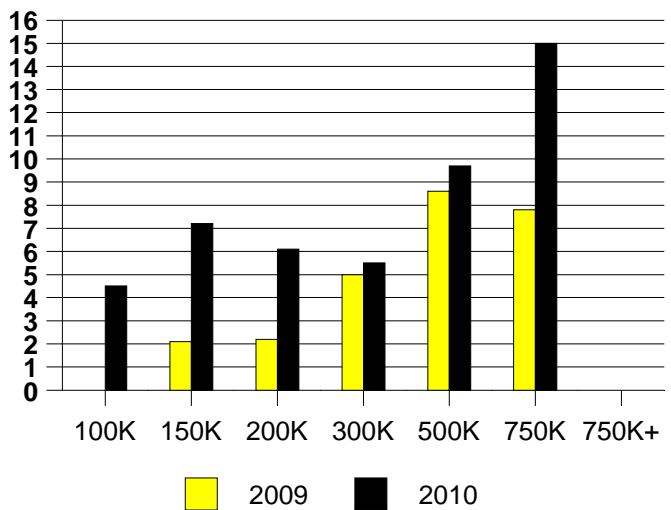
AVERAGE OVERPRICING
Original List Price to Sale Price

2009	5.1%
2010	6.6%

GRAPEVINE MONTHLY SALES



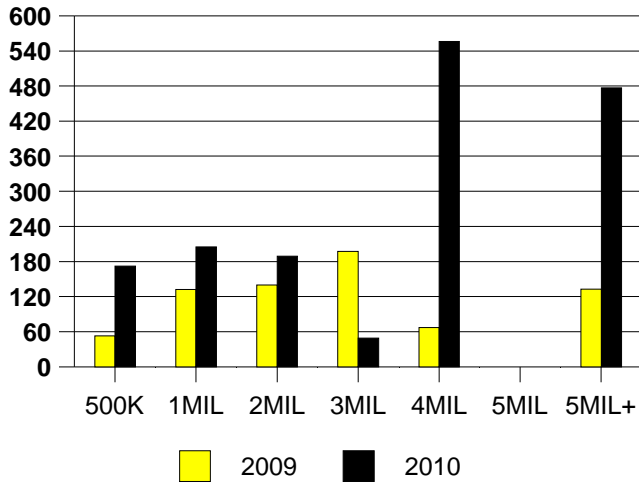
GRAPEVINE MONTHS OF INVENTORY



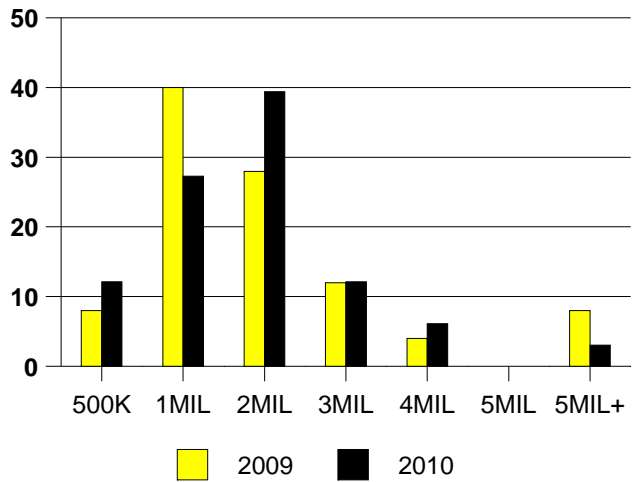
NTREIS Sold informaton as of 10/02/2010

	<u>2009</u>	<u>2010</u>
Total Sold Volume	\$ 44,565,536	\$ 47,782,856
Number of Sales	25	33
Median Sale Price	\$ 1,025,000	\$ 1,095,000

DAYS ON THE MARKET (HP)



MKT SHARE BY PRICE RANGE (HP)



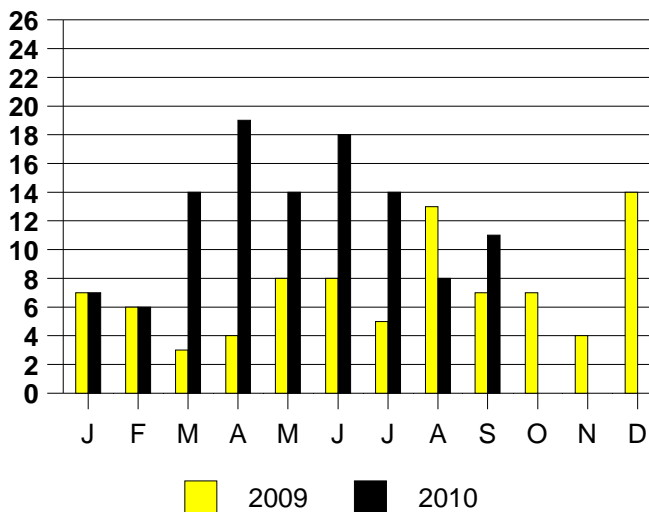
SALE/LIST PRICE RATIO

0K-500K	88.9%
501K-1MIL	95.8%
1MIL-2MIL	95.8%
2MIL-3MIL	95.0%
3MIL-4MIL	90.0%
4MIL-5MIL	NONE
5MIL+	100.0%

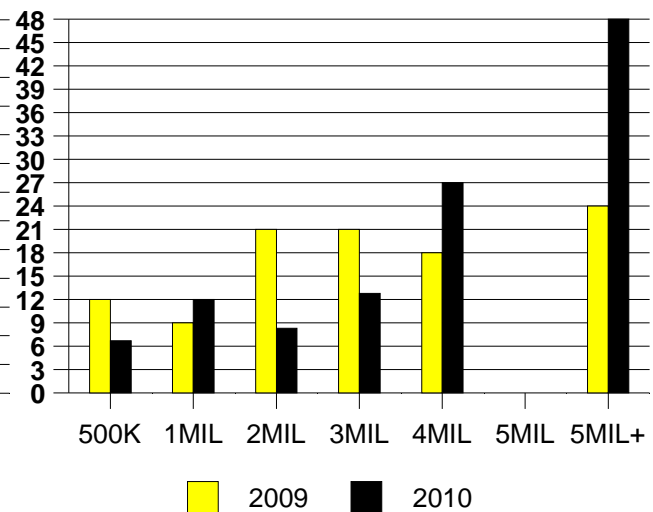
AVERAGE OVERPRICING

Orig List Price to Sale Price	
2009	13.0%
2010	18.6%

HIGHLAND PARK MONTHLY SALES



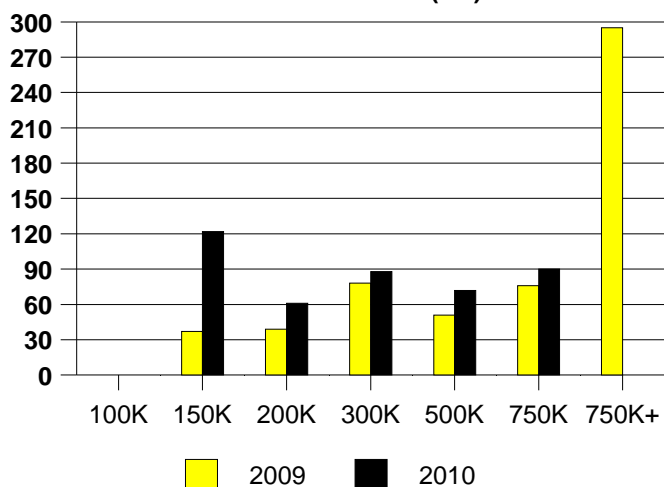
MONTHS OF INVENTORY (HIGHLAND PARK)
Inventory not shown where no sales



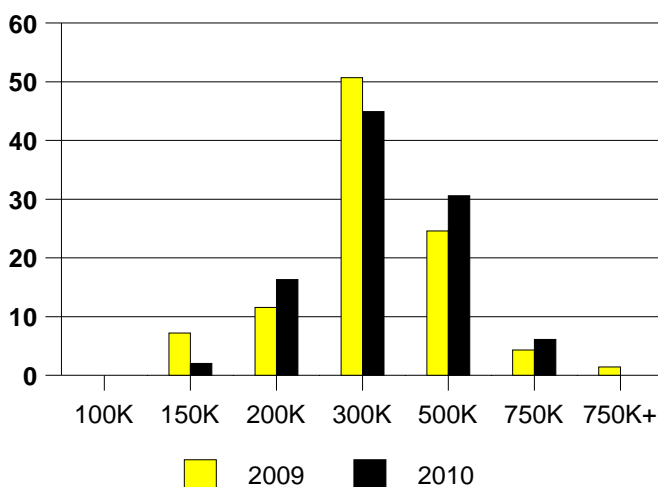
NTREIS Sold information as of 10/02/2010

	2009	2010
Total Sold Volume	\$19,462,000	\$ 14,666,399
Number of Sales	69	49
Median Sale Price	\$ 263,500	\$ 274,000

DAYS ON THE MARKET(HV)



% MARKET SHARE BY PRICE RANGE HV



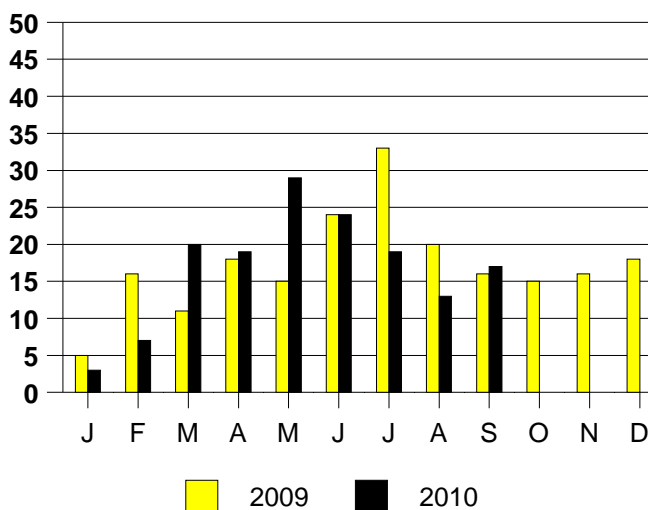
SALE/LIST PRICE RATIO

0K-100K	NONE
101K-150K	96.6%
151K-200K	98.3%
201K-300K	97.7%
301K-500K	96.1%
501K-750K	95.2%
751K+	NONE

AVERAGE OVERPRICING

Original List Price to Sale Price	
2009	6.3%
2010	5.8%

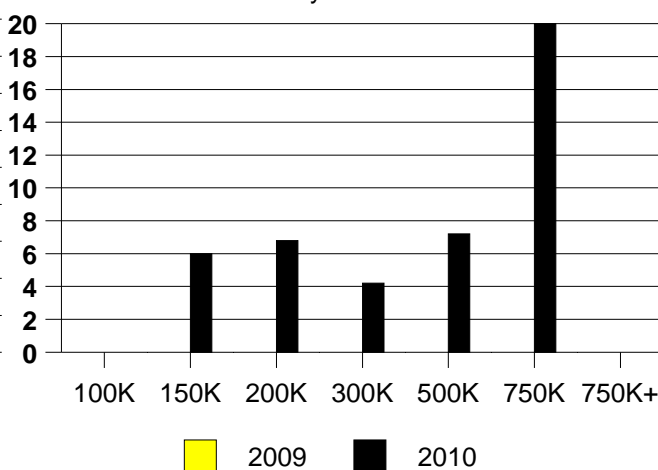
HIGH VILLAGE MONTHLY SALES



Inventory not shown where no sales

MONTHS OF INVENTORY HV

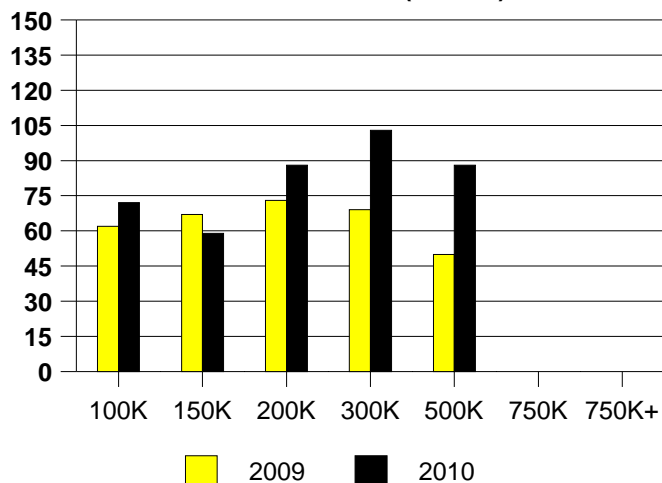
2009 Inventory not Available



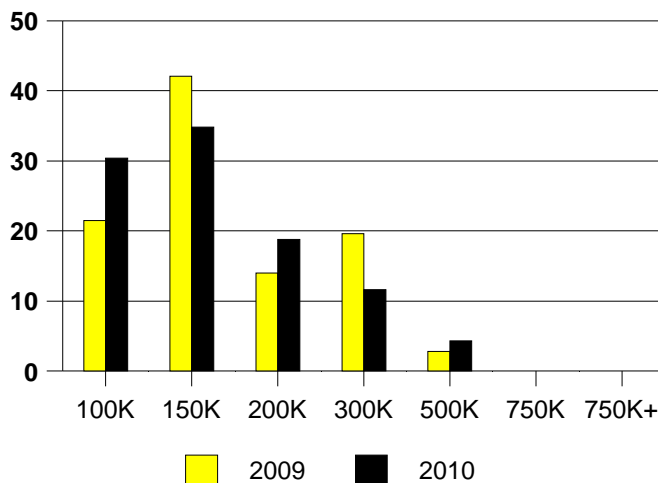
NTREIS Sold informaton as of 10/02/2010

	<u>2009</u>	<u>2010</u>
Total Sold Volume	\$ 15,954,660	\$ 9,856,060
Number of Sales	107	69
Median Sale Price	\$ 129,900	\$ 135,000

DAYS ON THE MARKET (HURST)



HURST MKT SHARE BY PRICE RANGE



SALE/LIST PRICE RATIO

0K-100K	93.2%
101K-150K	98.0%
151K-200K	97.1%
201K-300K	98.3%
301K-500K	97.4%
501K-750K	NONE
751K+	NONE

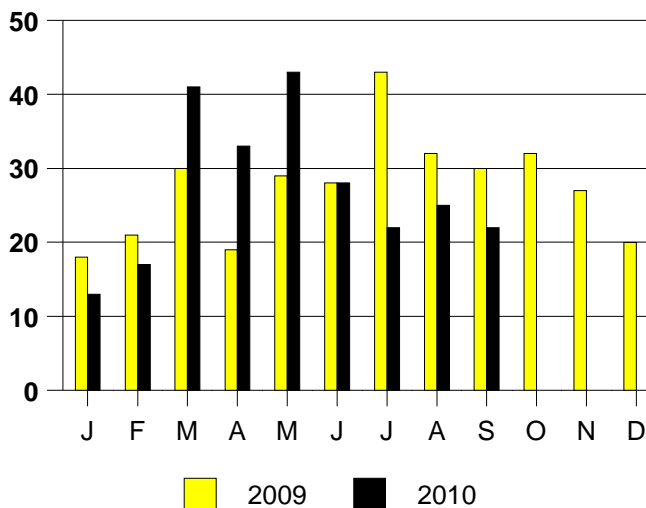
AVERAGE OVERPRICING

Original List Price to Sale Price

2009 5.8%

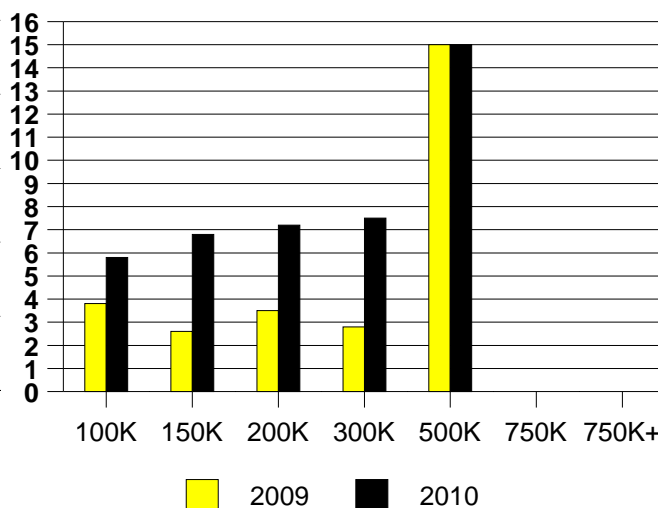
2010 8.7%

HURST MONTHLY SALES



Inventory not shown where no sales

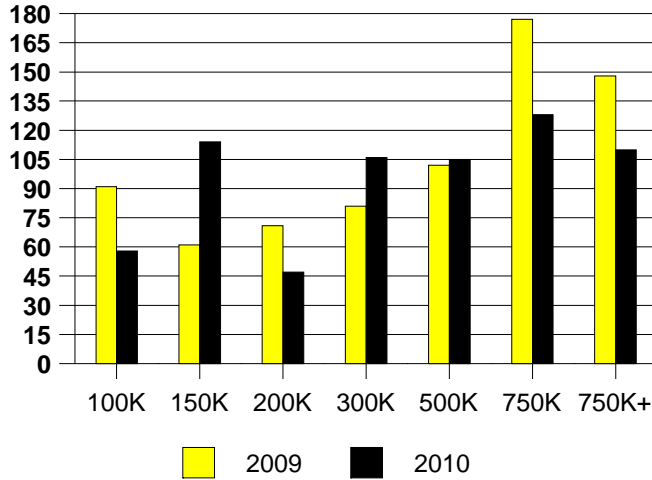
HURST MONTHS OF INVENTORY



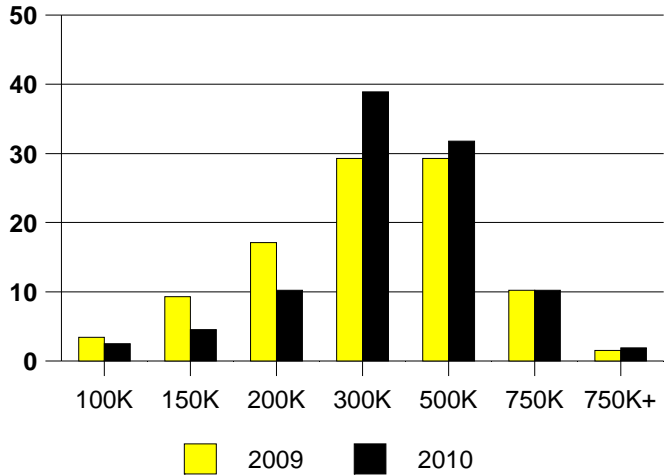
NTREIS Sold informaton as of 10/02/2010

	<u>2009</u>	<u>2010</u>
Total Sold Volume	\$ 62,738,064	\$ 50,295,912
Number of Sales	205	157
Median Sale Price	\$ 266,000	\$ 278,000

DAYS ON THE MARKET (KELLER)



KELLER MKT SHARE BY PRICE RANGE



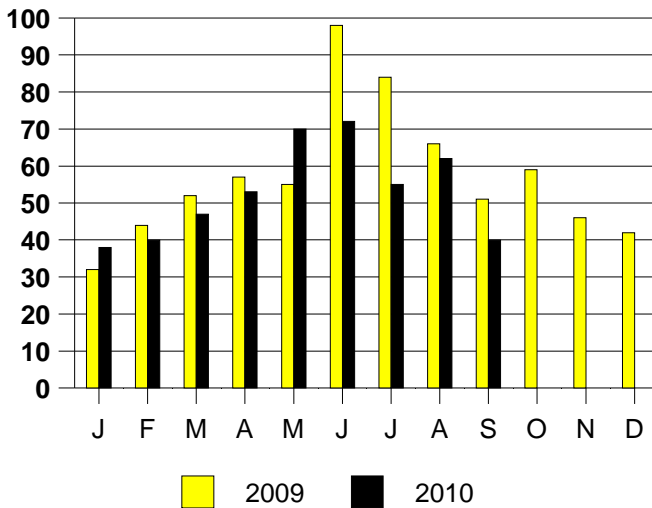
SALE/LIST PRICE RATIO

0K-100K	94.0%
101K-150K	94.6%
151K-200K	94.9%
201K-300K	97.9%
301K-500K	97.1%
501K-750K	96.4%
751K+	96.0%

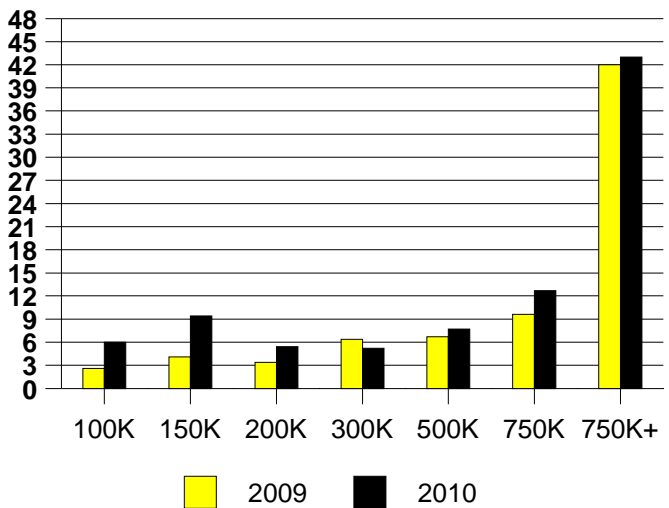
AVERAGE OVERPRICING
Original List Price to Sale Price

2009	7.0%
2010	6.3%

KELLER MONTHLY SALES



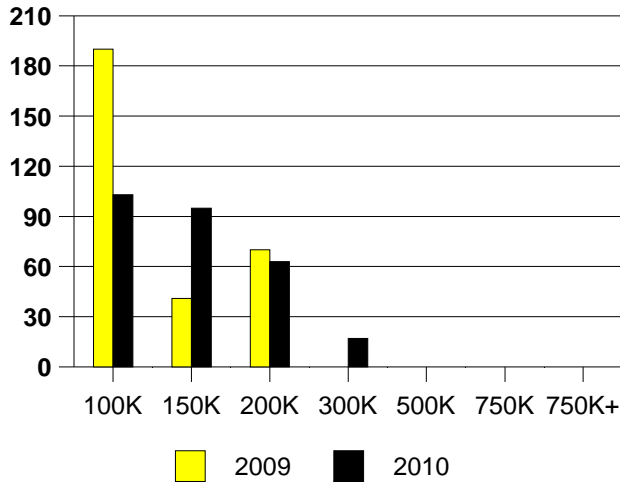
Inventory not shown where no sales
KELLER MONTHS OF INVENTORY



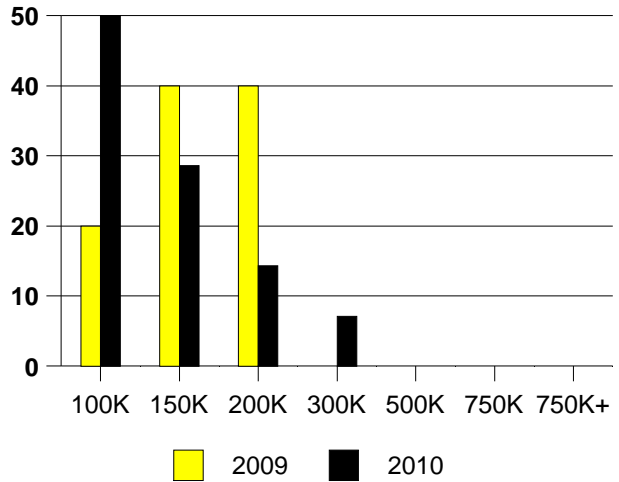
NTREIS Sold informaton as of 10/02/2010

	<u>2009</u>	<u>2010</u>
Total Sold Volume	\$ 3,342,941	\$ 1,577,650
Number of Sales	25	14
Median Sale Price	\$ 140,000	\$ 100,000

LAKE DALLAS DAYS ON THE MARKET



LAKE DALLAS MKT SHARE BY PRICE RANGE



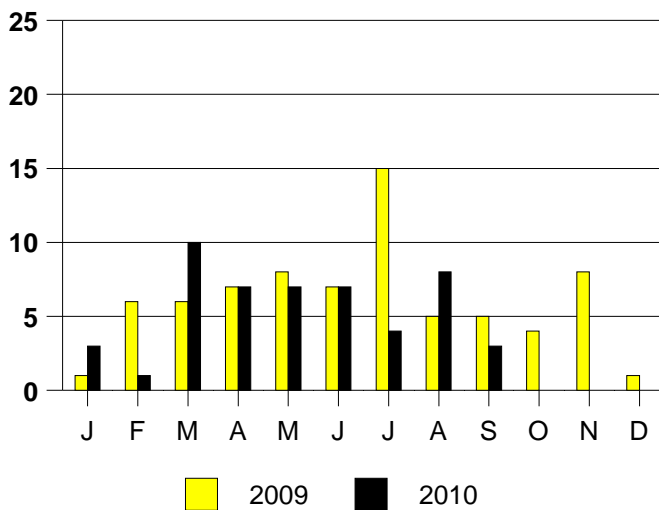
SALE/LIST PRICE RATIO

0K-100K	99.0%
101K-150K	96.1%
151K-200K	98.4%
201K-300K	96.4%
301K-500K	NONE
501K-750K	NONE
751K+	NONE

AVERAGE OVERPRICING
Original List Price to Sale Price

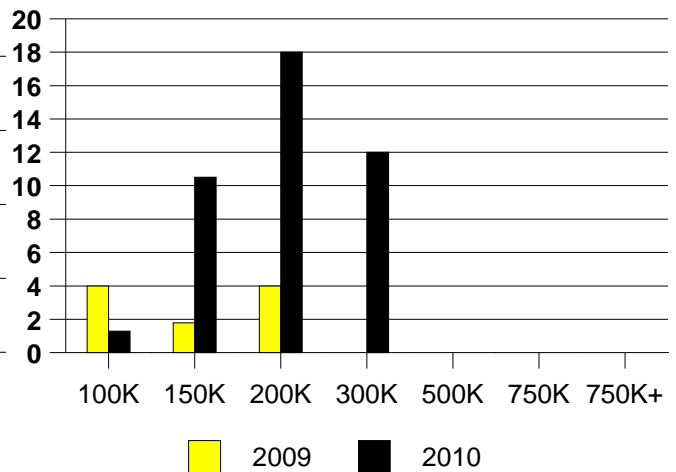
2009	7.0%
2010	3.9%

LAKE DALLAS MONTHLY SALES



LAKE DALLAS MONTHS OF INVENTORY

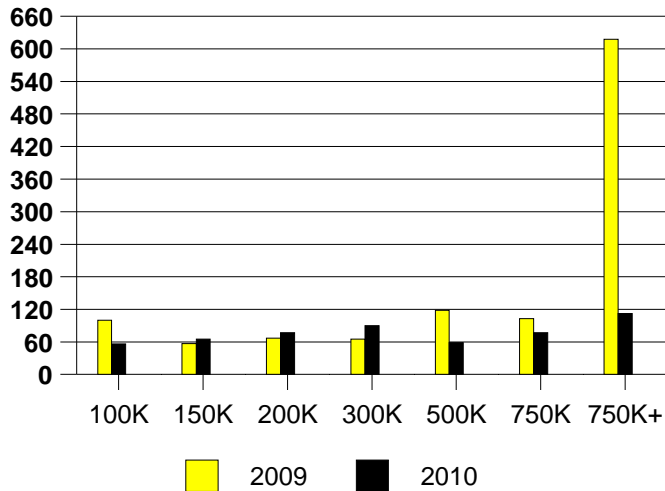
2009 Inventory is Year End



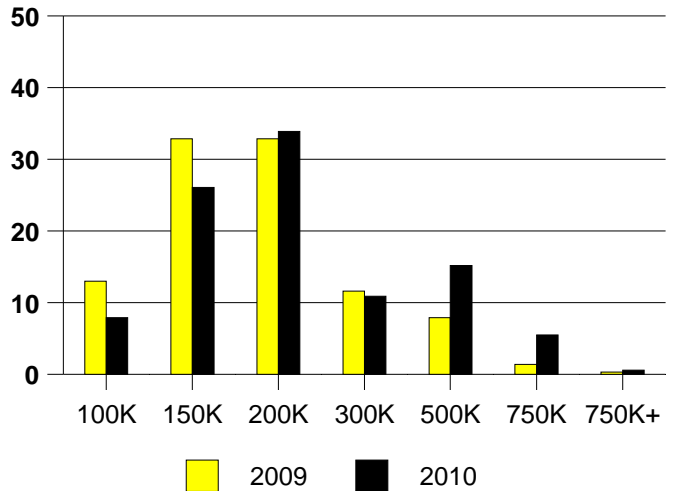
NTREIS Sold informaton as of 10/02/2010

	2009	2010
Total Sold Volume	\$ 52,823,224	\$ 36,878,132
Number of Sales	292	165
Median Sale Price	\$ 155,000	\$ 170,000

DAYS ON THE MARKET (LEWISVILLE)



LEWISVILLE MKT SHARE BY PRICE RANGE



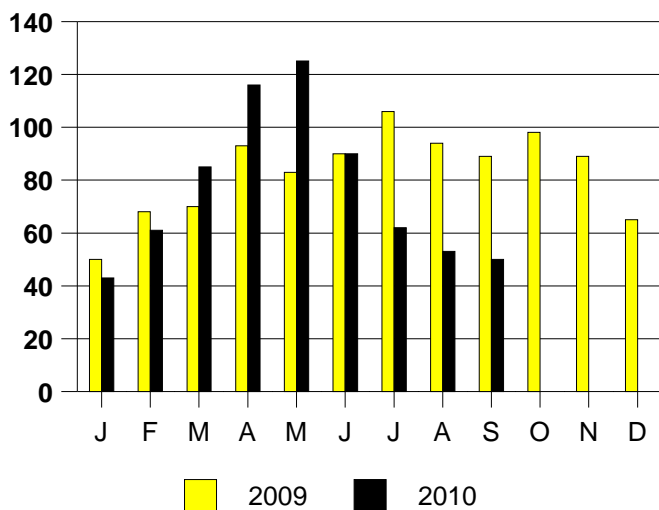
SALE/LIST PRICE RATIO

0K-100K	92.1%
101K-150K	97.3%
151K-200K	96.8%
201K-300K	96.2%
301K-500K	95.7%
501K-750K	94.8%
751K+	100.0%

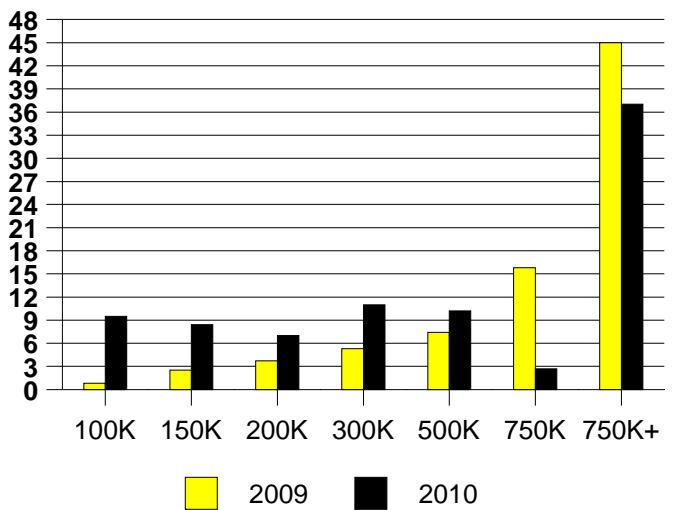
AVERAGE OVERPRICING
Original List Price to Sale Price

2009	4.7%
2010	7.8%

LEWISVILLE MONTHLY SALES



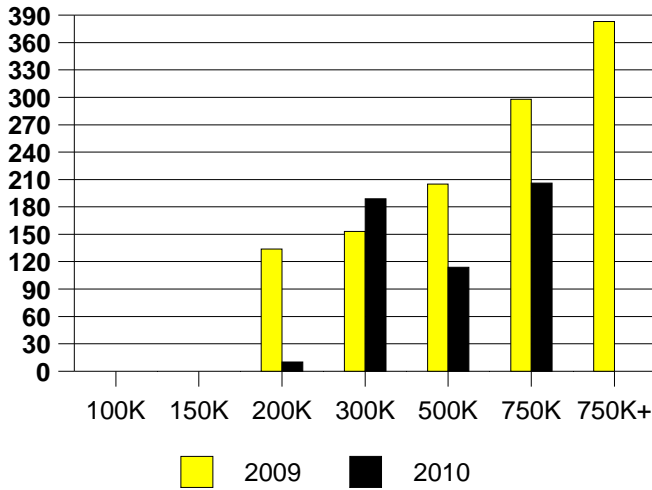
Inventory not shown where no sales
LEWISVILLE MONTHS OF INVENTORY



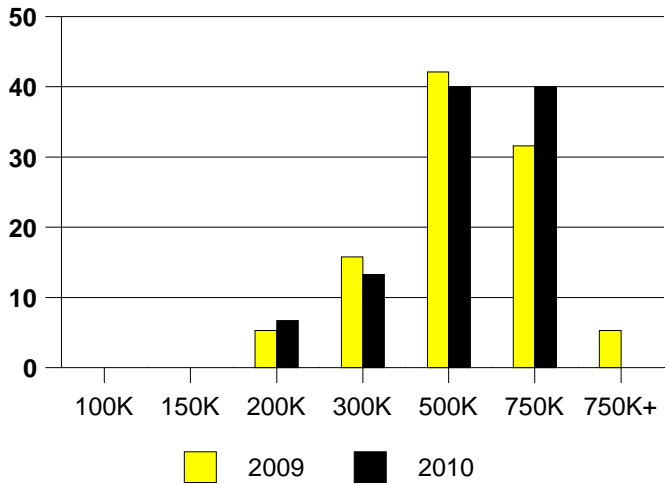
NTREIS Sold informaton as of 10/02/2010

	2009	2010
Total Sold Volume	\$ 8,562,413	\$ 6,790,730
Number of Sales	19	15
Median Sale Price	\$ 445,000	\$ 460,000

DAYS ON THE MARKET (LUCAS)



LUCAS MKT SHARE BY PRICE RANGE



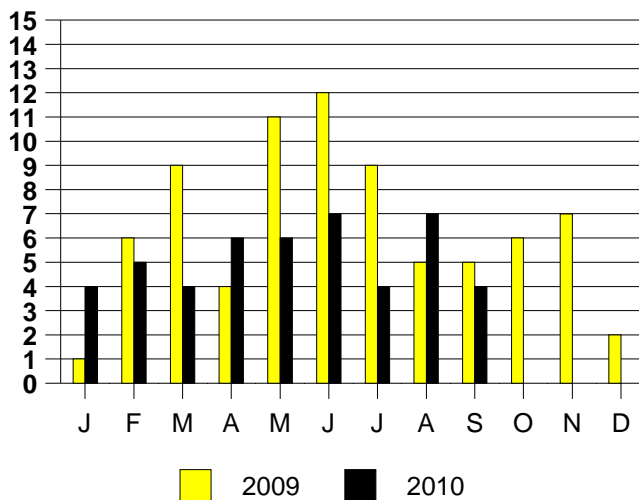
SALE/LIST PRICE RATIO

0K-100K	NONE
101K-150K	NONE
151K-200K	101.7%
201K-300K	92.8%
301K-500K	98.0%
501K-750K	96.4%
751K+	NONE

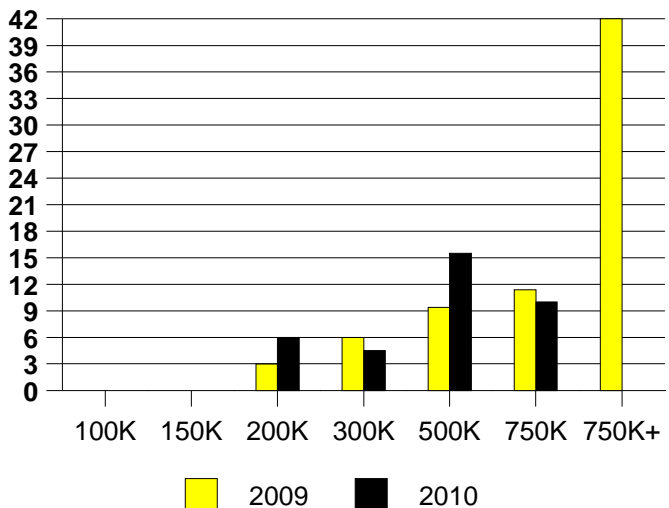
AVERAGE OVERPRICING
Original List Price to Sale Price

2009	13.0%
2010	10.6%

LUCAS MONTHLY SALES

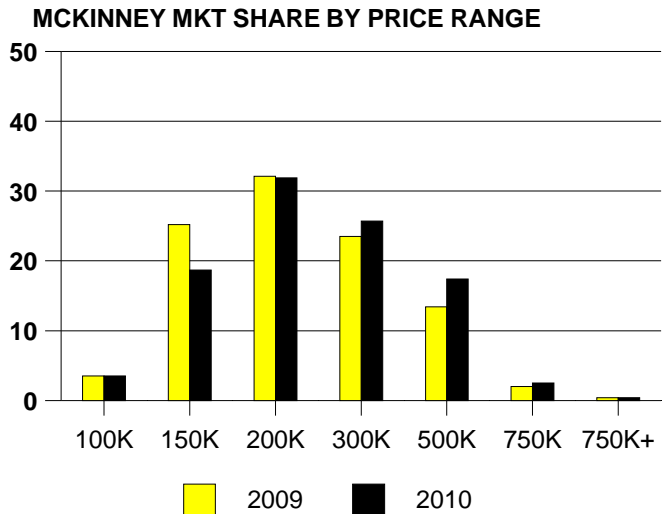
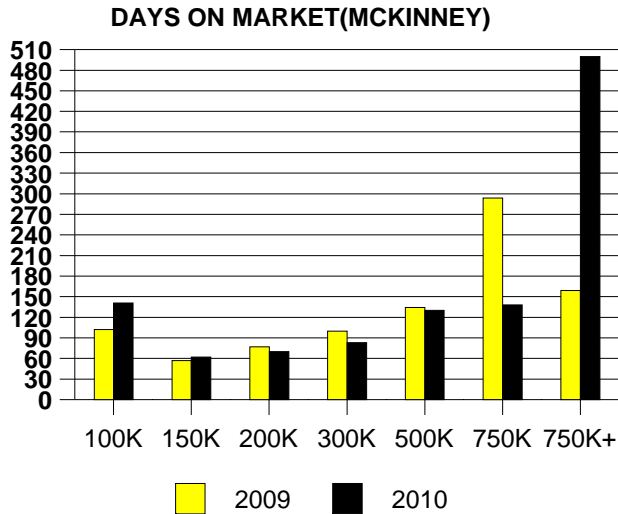


Inventory not shown where no sales
LUCAS MONTHS OF INVENTORY



NTREIS Sold informaton as of 10/02/2010

	2009	2010
Total Sold Volume	\$ 163,045,856	\$ 118,955,992
Number of Sales	763	518
Median Sale Price	\$ 175,000	\$ 192,172



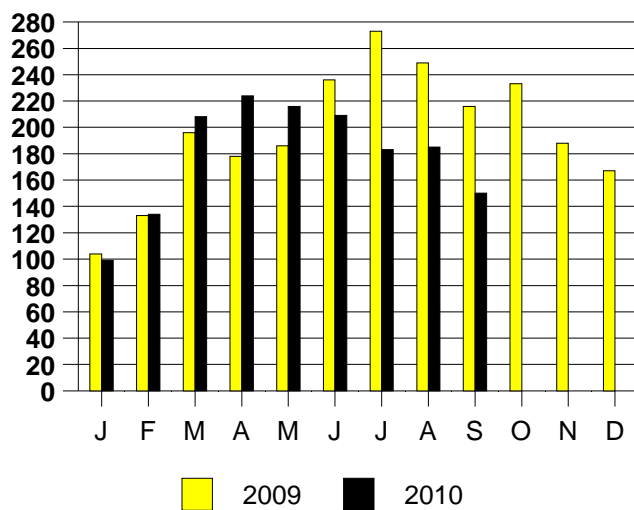
SALE/LIST PRICE RATIO

0K-100K	95.8%
101K-150K	96.5%
151K-200K	97.7%
201K-300K	97.2%
301K-500K	96.9%
501K-750K	96.8%
751K+	95.6%

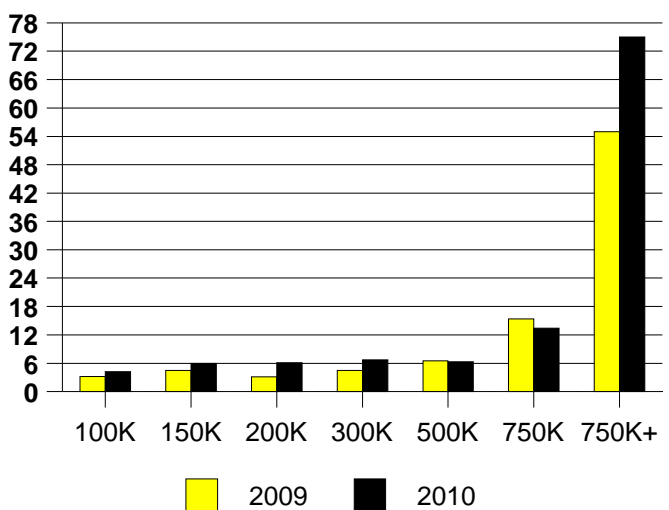
AVERAGE OVERPRICING
Original List Price to Sale Price

2009	5.9%
2010	7.5%

MCKINNEY MONTHLY SALES



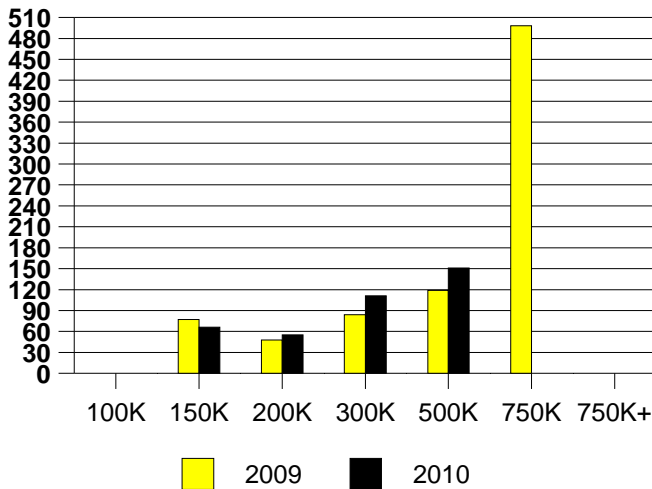
Inventory not shown where no sales
MCKINNEY MONTHS OF INVENTORY



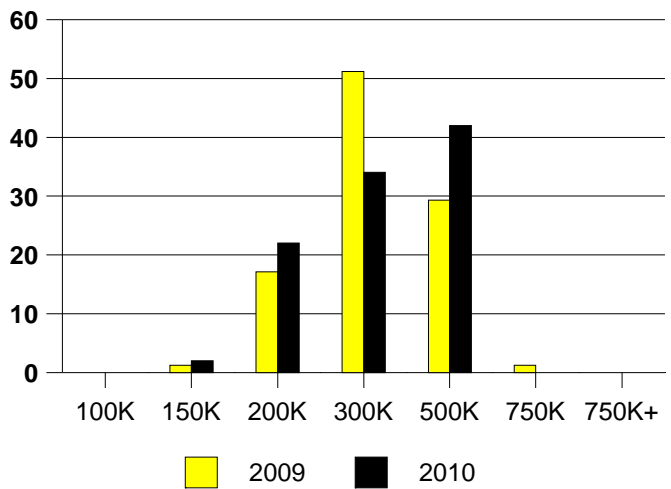
NTREIS Sold informaton as of 10/02/2010

	2009	2010
Total Sold Volume	\$22,153,666	\$ 14,405,688
Number of Sales	82	50
Median Sale Price	\$ 250,000	\$ 277,500

DAYS ON THE MARKET (MURPHY)



MURPHY MKT SHARE BY PRICE RANGE



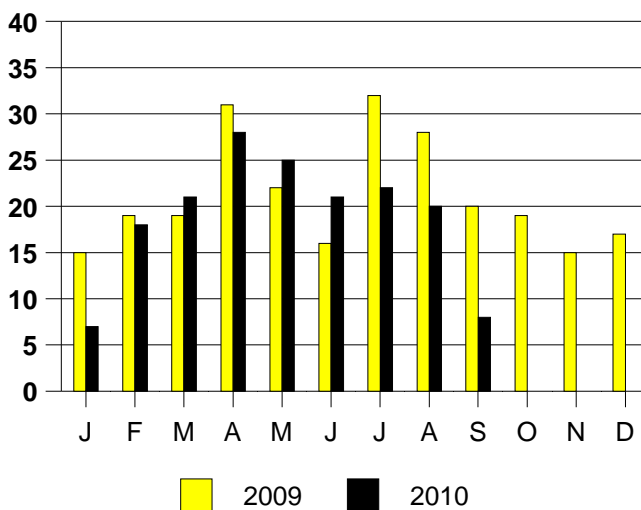
SALE/LIST PRICE RATIO

0K-100K	NONE
101K-150K	100.0%
151K-200K	94.7%
201K-300K	96.6%
301K-500K	96.3%
501K-750K	NONE
751K+	NONE

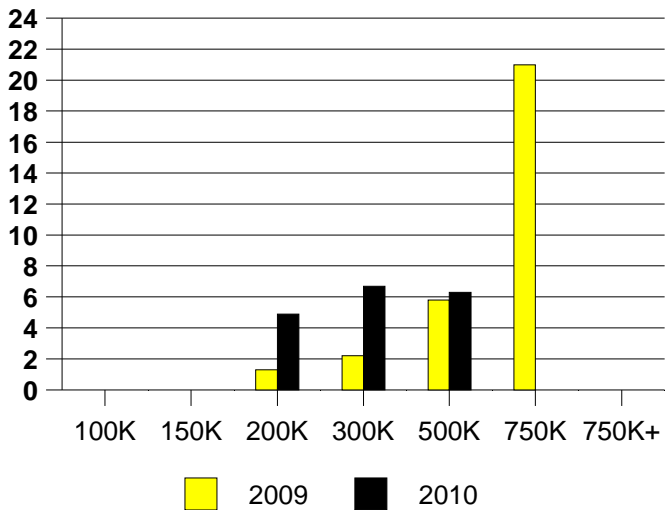
AVERAGE OVERPRICING
Original List Price to Sale Price

2009	7.7%
2010	6.9%

MURPHY MONTHLY SALES



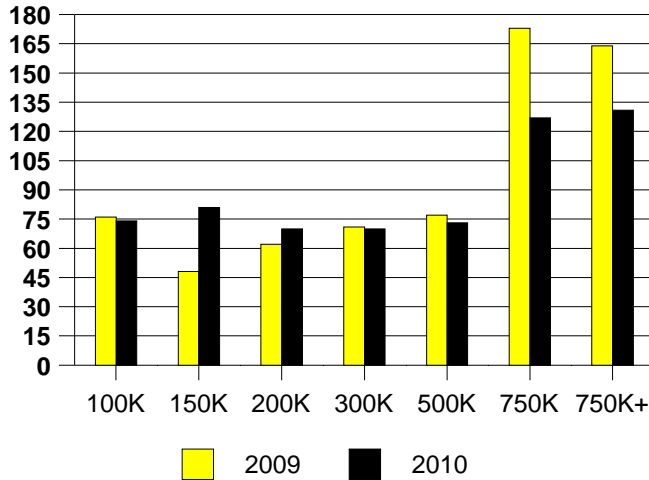
Inventory not shown where no sales
MURPHY MONTHS OF INVENTORY



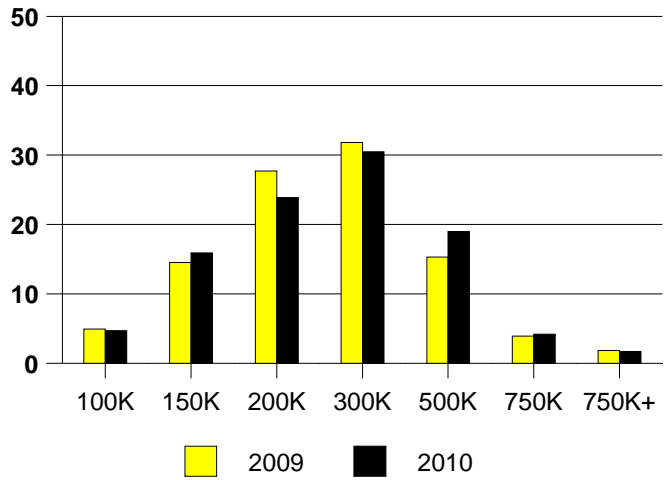
NTREIS Sold informaton as of 10/02/2010

	<u>2009</u>	<u>2010</u>
Total Sold Volume	\$ 215,093,632	\$ 149,957,696
Number of Sales	869	590
Median Sale Price	\$ 208,000	\$ 217,500

DAYS ON MARKET(PLANO)



PLANO MKT SHARE BY PRICE RANGE



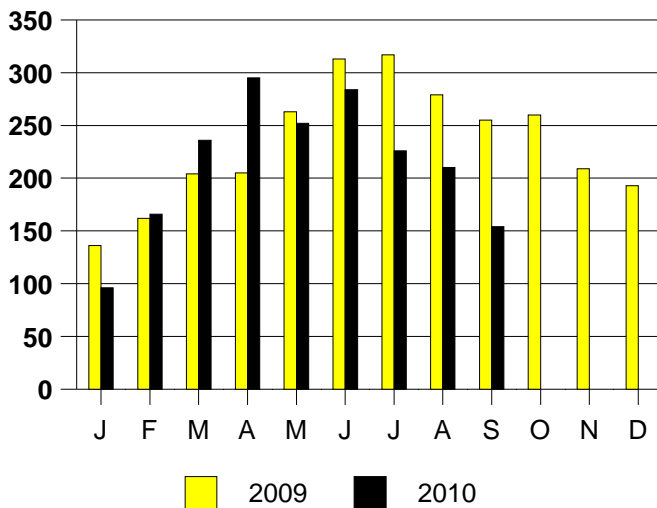
SALE/LIST PRICE RATIO

0K-100K	95.8%
101K-150K	96.5%
151K-200K	97.7%
201K-300K	97.2%
301K-500K	96.9%
501K-750K	96.8%
751K+	95.6%

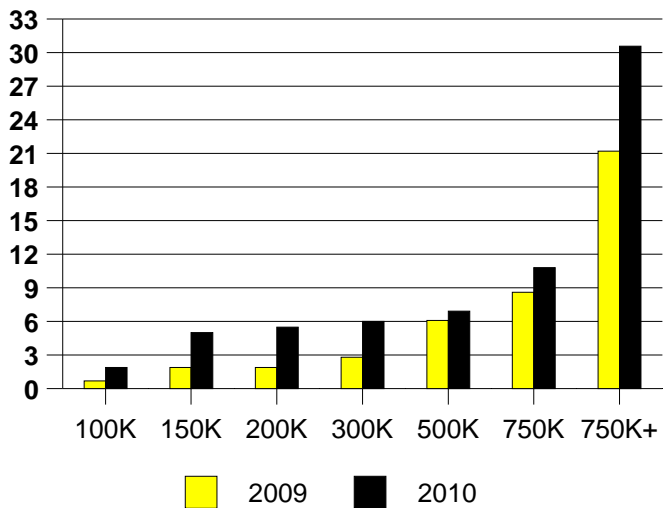
AVERAGE OVERPRICING
Original List Price to Sale Price

2009	5.7%
2010	6.3%

PLANO MONTHLY SALES



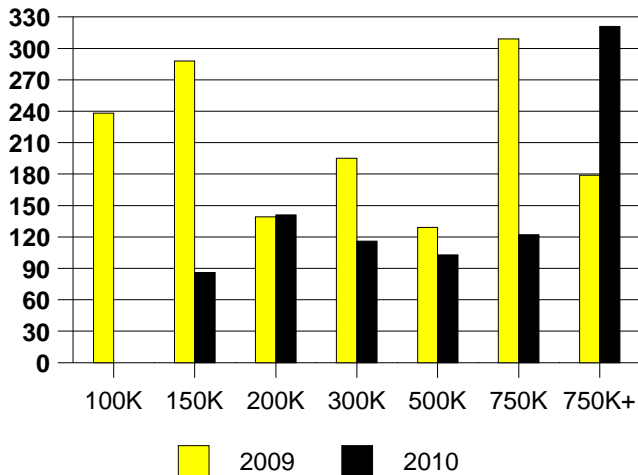
Inventory not shown where no sales
PLANO MONTHS OF INVENTORY



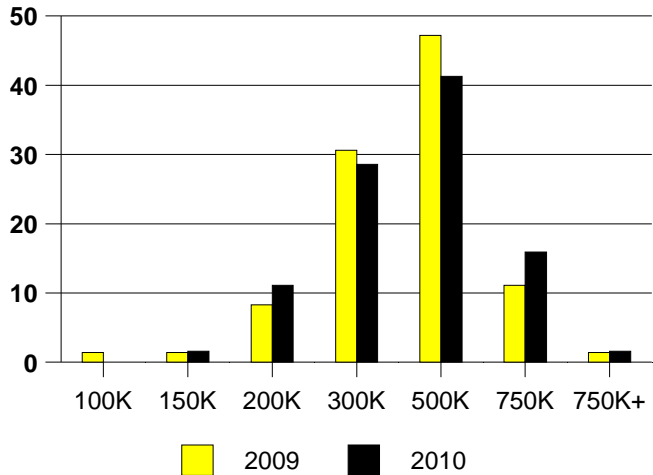
NTREIS Sold informaton as of 10/02/2010

	<u>2009</u>	<u>2010</u>
Total Sold Volume	\$ 26,244,822	\$ 22,849,066
Number of Sales	72	63
Median Sale Price	\$ 323,495	\$ 335,000

PROSPER DAYS ON THE MARKET



PROSPER MARKET SHARE BY PRICE RANGE



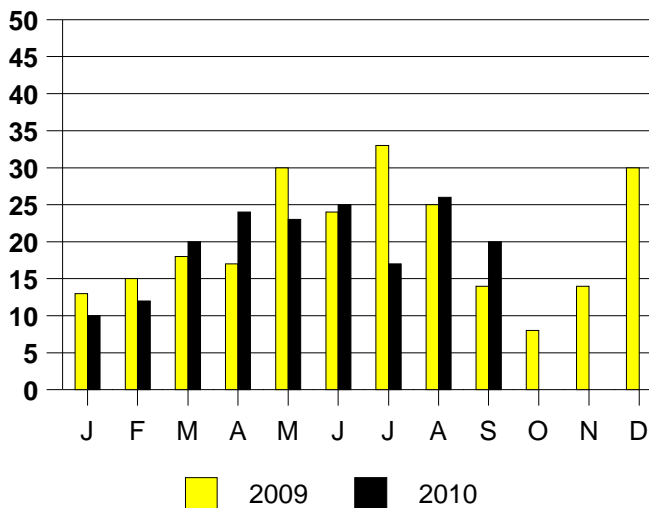
SALE/LIST PRICE RATIO

0K-100K	NONE
101K-150K	98.4%
151K-200K	96.7%
201K-300K	98.0%
301K-500K	96.7%
501K-750K	98.3%
751K+	100.0%

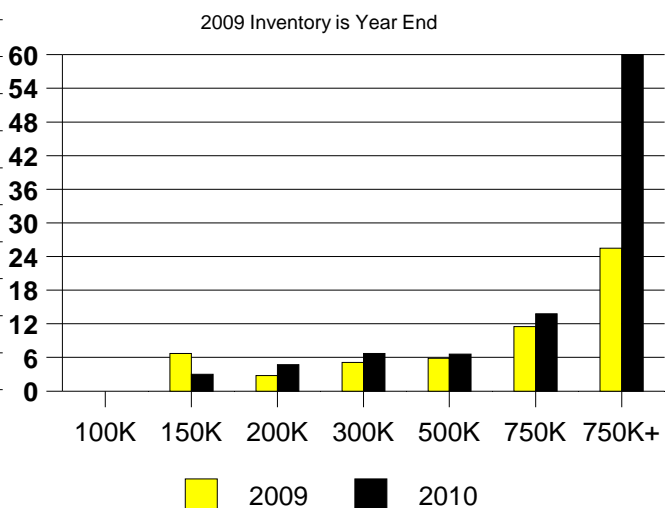
AVERAGE OVERPRICING
Original List Price to Sale Price

2009	8.1%
2010	7.2%

PROSPER MONTHLY SALES



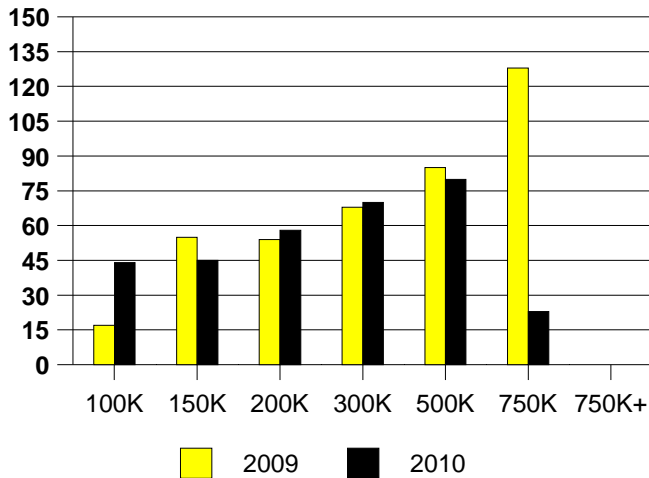
PROSPER MONTHS OF INVENTORY
Inventory not shown where no sales
2009 Inventory is Year End



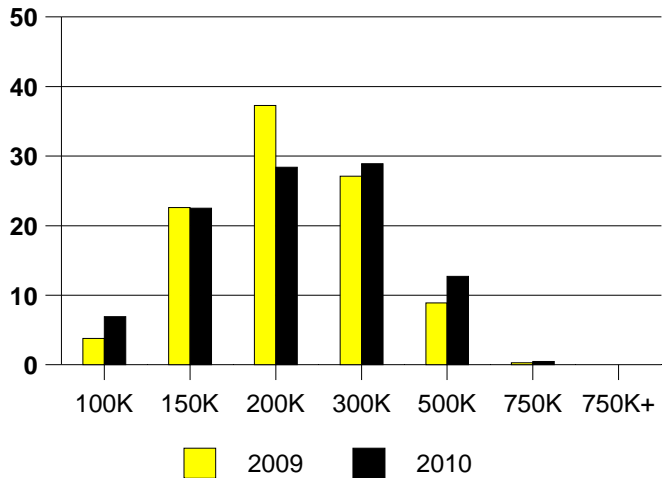
NTREIS Sold informaton as of 10/02/2010

	<u>2009</u>	<u>2010</u>
Total Sold Volume	\$ 57,327,512	\$ 41,303,060
Number of Sales	292	204
Median Sale Price	\$ 178,000	\$ 181,750

DAYS ON MARKET(RICHARDSON)



RICHARDSON MKT SHARE BY PRICE RANGE



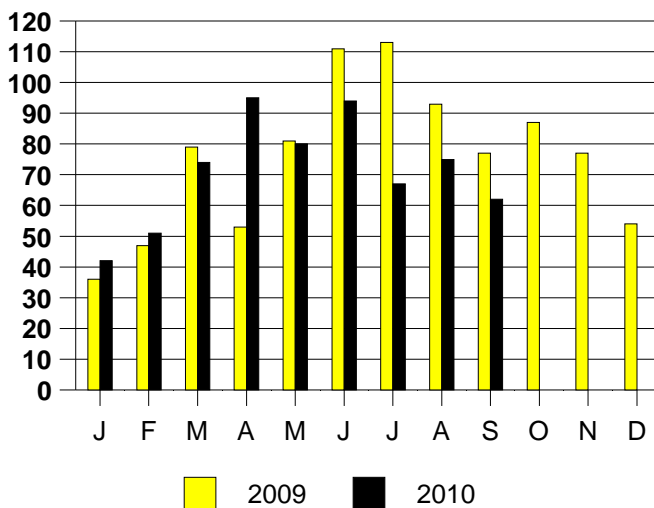
SALE/LIST PRICE RATIO

0K-100K	94.6%
101K-150K	96.9%
151K-200K	97.3%
201K-300K	96.8%
301K-500K	97.3%
501K-750K	96.4%
751K+	NONE

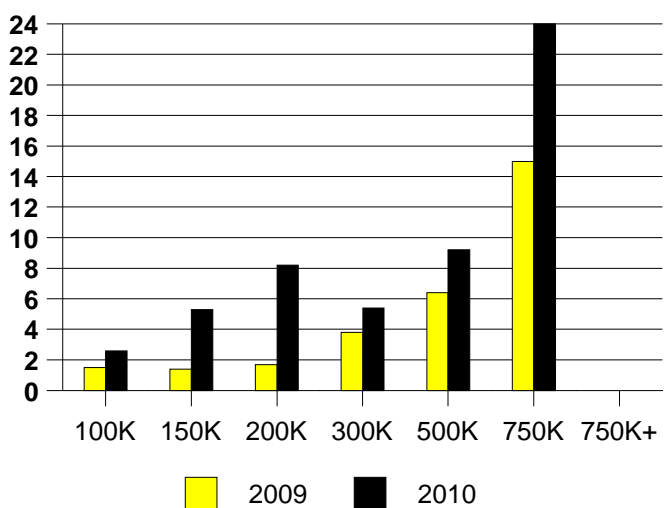
AVERAGE OVERPRICING
Original List Price to Sale Price

2009	4.6%
2010	7.0%

RICHARDSON MONTHLY SALES



RICHARDSON MONTHS OF INVENTORY

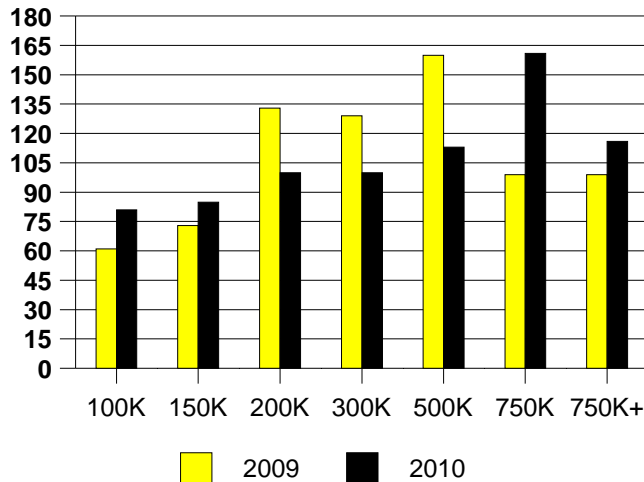


Inventory not shown where no sales

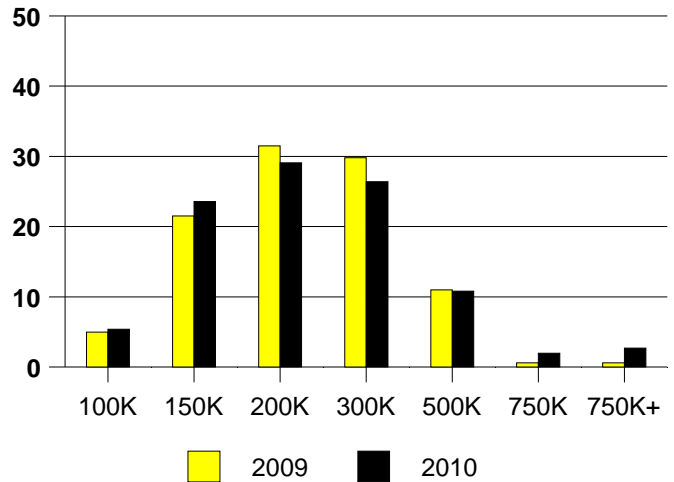
NTREIS Sold informaton as of 10/02/2010

	<u>2009</u>	<u>2010</u>
Total Sold Volume	\$ 37,767,548	\$ 33,288,616
Number of Sales	181	148
Median Sale Price	\$ 184,000	\$ 184,450

DAYS ON THE MARKET (ROCKWALL)



ROCKWALL MKT SHARE BY PRICE RANGE



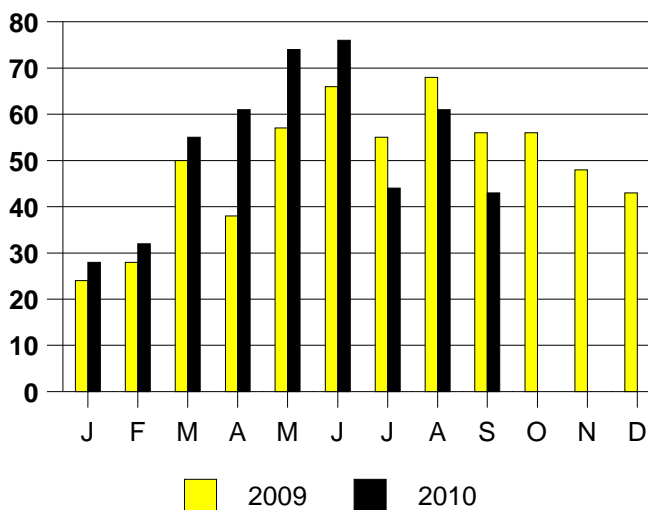
SALE/LIST PRICE RATIO

0K-100K	91.2%
101K-150K	97.1%
151K-200K	97.4%
201K-300K	95.2%
301K-500K	94.6%
501K-750K	94.2%
751K+	98.2%

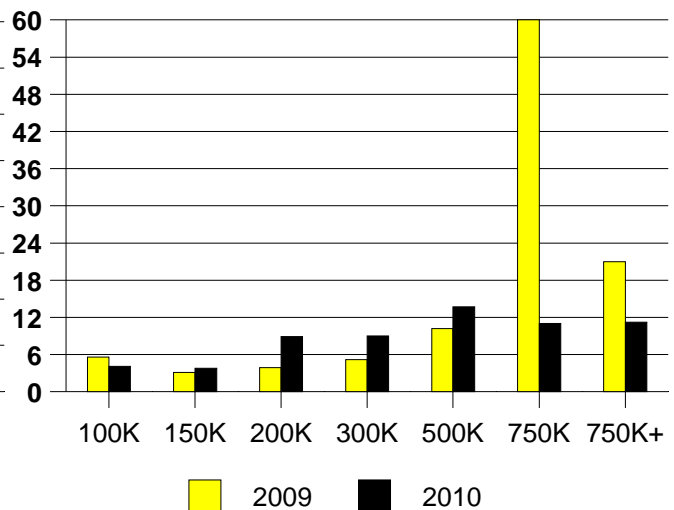
AVERAGE OVERPRICING
Original List Price to Sale Price

2009	8.2%
2010	7.6%

ROCKWALL MONTHLY SALES



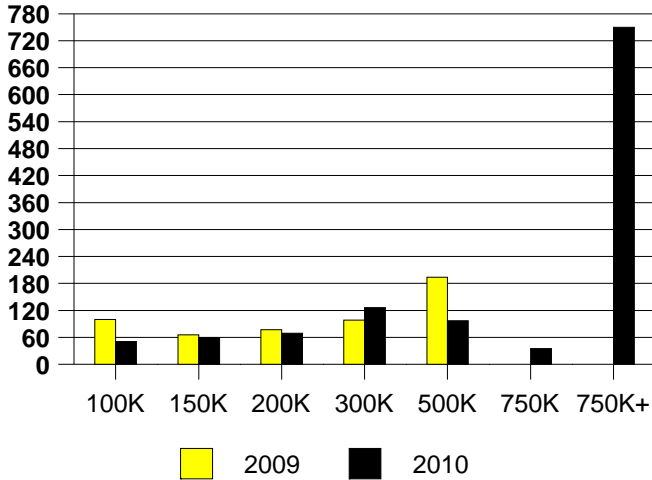
Inventory not shown where no sales
ROCKWALL MONTHS OF INVENTORY



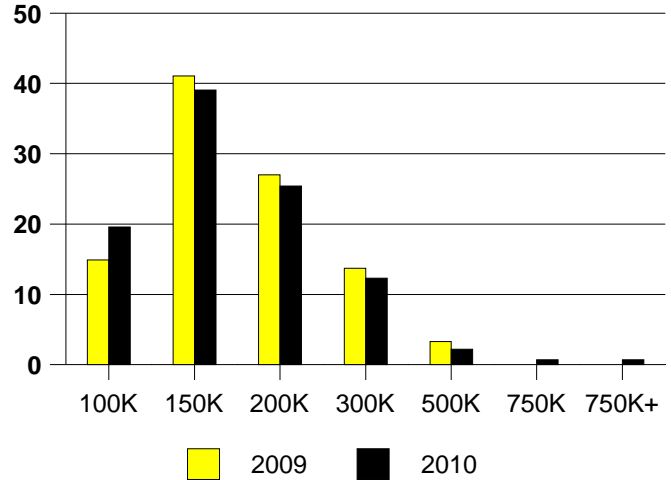
NTREIS Sold informaton as of 10/02/2010

	<u>2009</u>	<u>2010</u>
Total Sold Volume	\$ 36,887,988	\$ 21,346,580
Number of Sales	241	138
Median Sale Price	\$ 145,000	\$ 138,000

DAYS ON THE MARKET (ROWLETT)



ROWLETT MKT SHARE BY PRICE RANGE



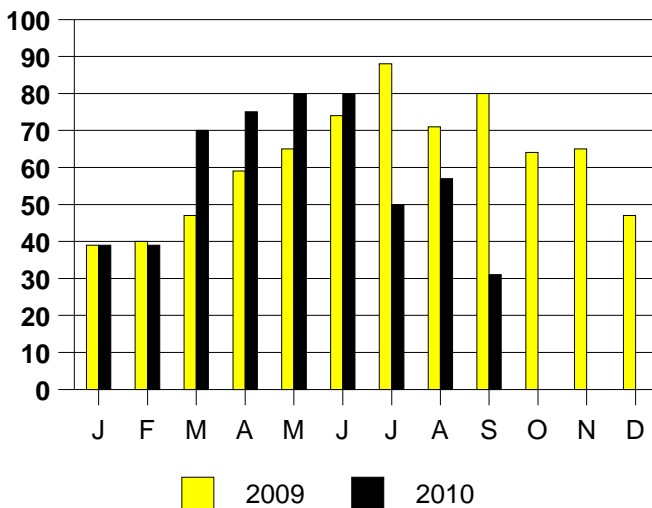
SALE/LIST PRICE RATIO

0K-100K	94.5%
101K-150K	97.7%
151K-200K	98.5%
201K-300K	96.6%
301K-500K	92.7%
501K-750K	81.5%
751K+	100.0%

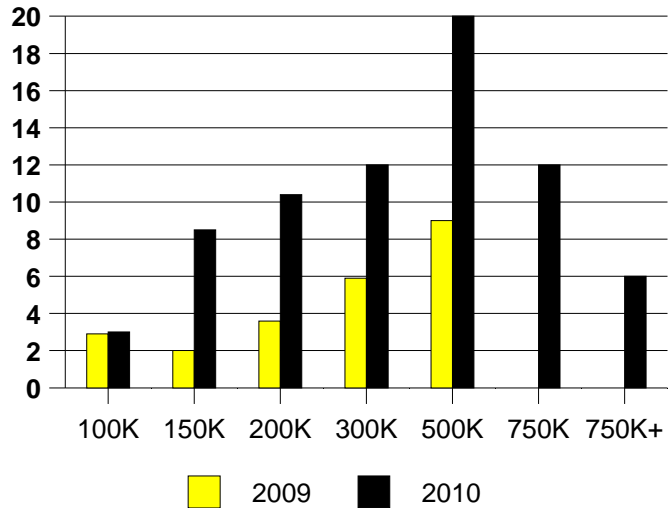
AVERAGE OVERPRICING
Original List Price to Sale Price

2009	4.7%
2010	7.4%

ROWLETT MONTHLY SALES



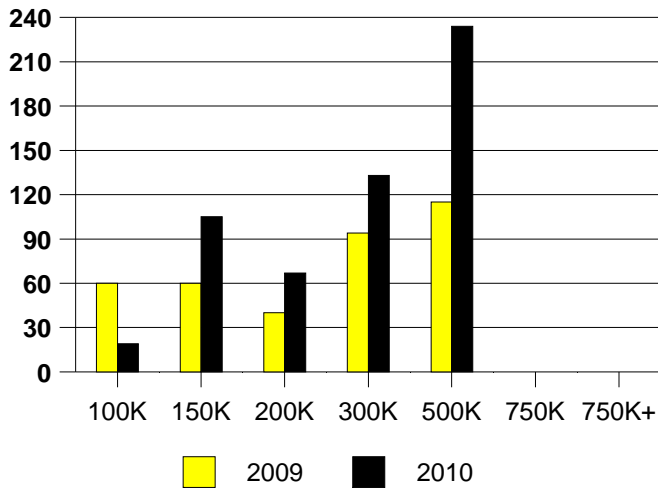
Inventory not shown where no sales
ROWLETT MONTHS OF INVENTORY



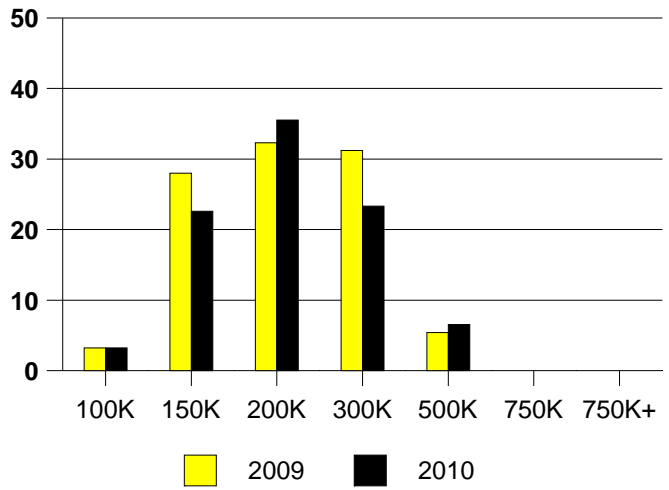
NTREIS Sold informaton as of 10/02/2010

	<u>2009</u>	<u>2010</u>
Total Sold Volume	\$ 17,967,520	\$ 12,238,784
Number of Sales	93	62
Median Sale Price	\$ 173,250	\$ 173,500

DAYS ON THE MARKET (SACHSE)



SACHSE MKT SHARE BY PRICE RANGE



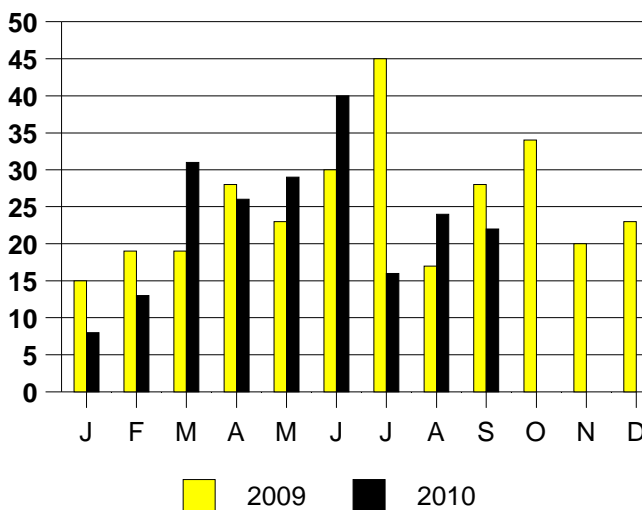
SALE/LIST PRICE RATIO

0K-100K	97.1%
101K-150K	95.0%
151K-200K	98.5%
201K-300K	94.6%
301K-500K	98.7%
501K-750K	NONE
751K+	NONE

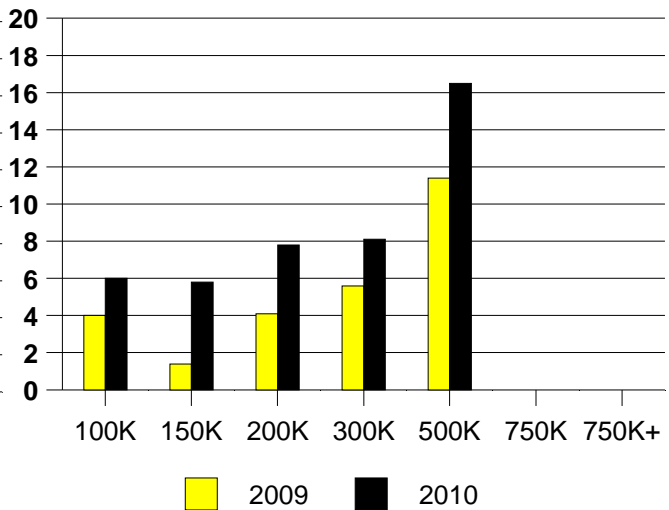
AVERAGE OVERPRICING
Original List Price to Sale Price

2009	5.5%
2010	7.4%

SACHSE MONTHLY SALES



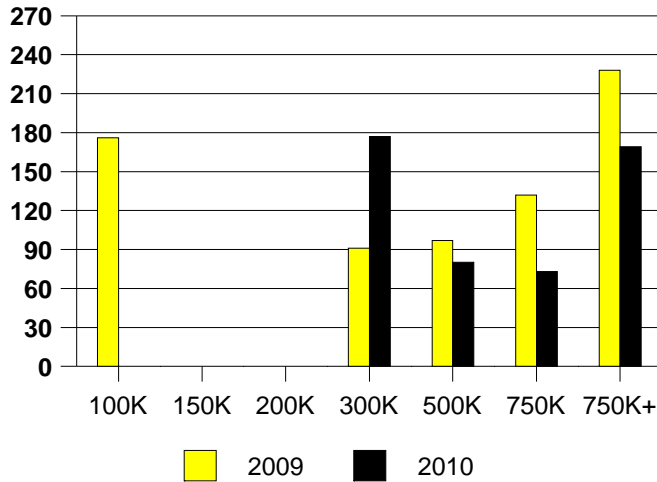
Inventory not shown where no sales
SACHSE MONTHS OF INVENTORY



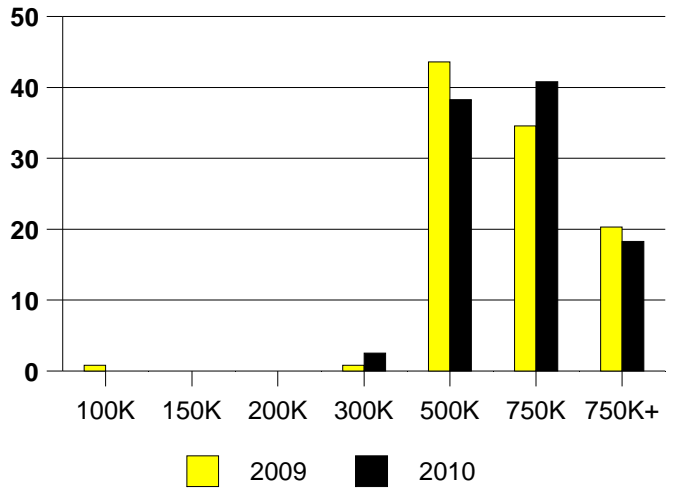
NTREIS Sold informaton as of 10/02/2010

	<u>2009</u>	<u>2010</u>
Total Sold Volume	\$ 79,084,688	\$ 75,108,888
Number of Sales	133	120
Median Sale Price	\$ 525,000	\$ 564,500

DAYS ON THE MARKET (SOUTHLAKE)



SOUTHLAKE MKT SHARE BY PRICE RANGE



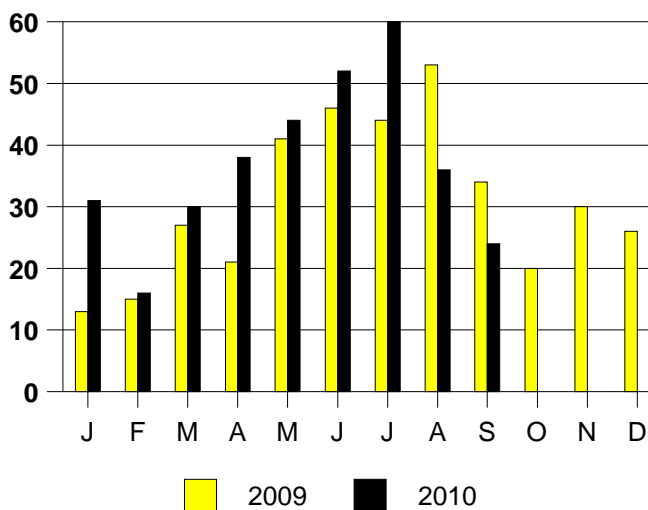
SALE/LIST PRICE RATIO

0K-100K	NONE
101K-150K	NONE
151K-200K	NONE
201K-300K	95.0%
301K-500K	96.6%
501K-750K	96.7%
751K+	94.4%

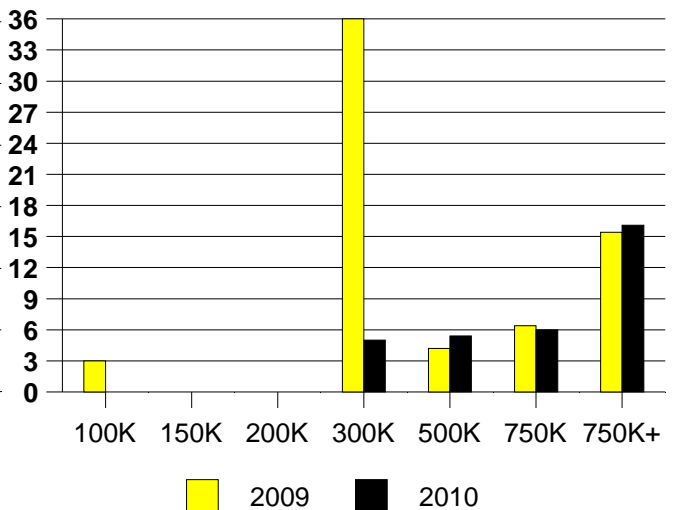
AVERAGE OVERPRICING
Original List Price to Sale Price

2009	9.7%
2010	7.7%

SOUTHLAKE MONTHLY SALES



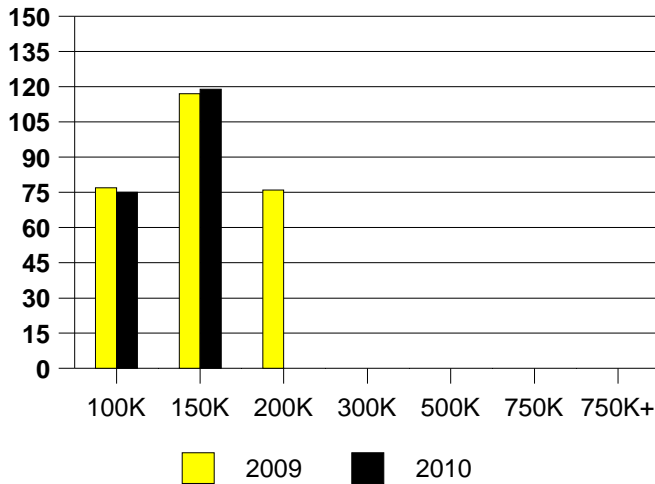
Inventory not shown where no sales
SOUTHLAKE MONTHS OF INVENTORY



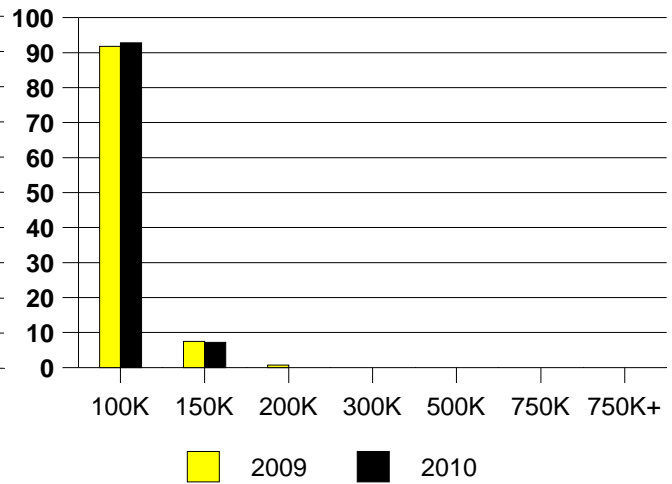
NTREIS Sold informaton as of 10/02/2010

	<u>2009</u>	<u>2010</u>
Total Sold Volume	\$7,741,074	\$ 6,036,587
Number of Sales	134	97
Median Sale Price	\$ 55,250	\$ 62,100

DAYS ON THE MARKET (OAK CLIFF)



OAK CLIFF MKT SHARE BY PRICE RANGE



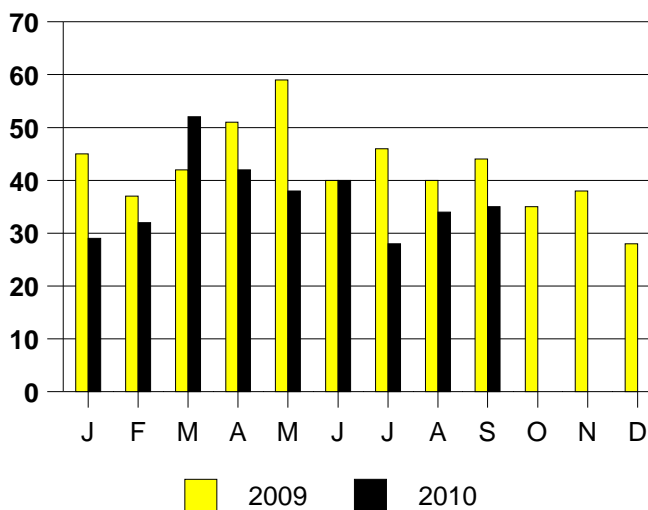
SALE/LIST PRICE RATIO

0K-100K	98.3%
101K-150K	97.4%
151K-200K	NONE
201K-300K	NONE
301K-500K	NONE
501K-750K	NONE
751K+	NONE

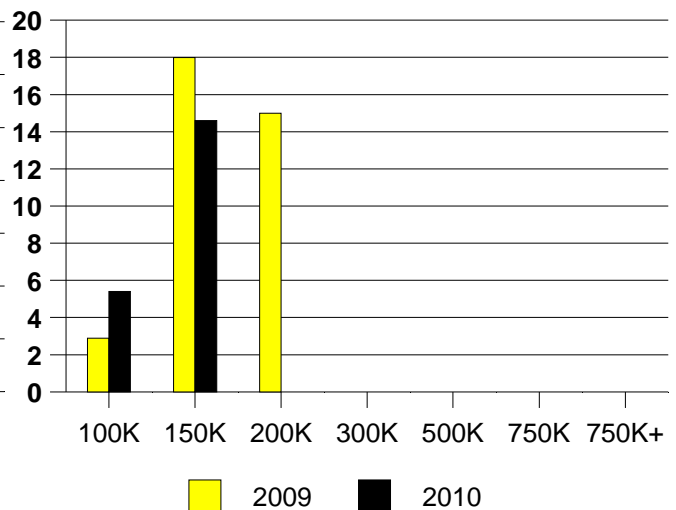
AVERAGE OVERPRICING
Original List Price to Sale Price

2009	13.6%
2010	13.1%

OAK CLIFF MONTHLY SALES



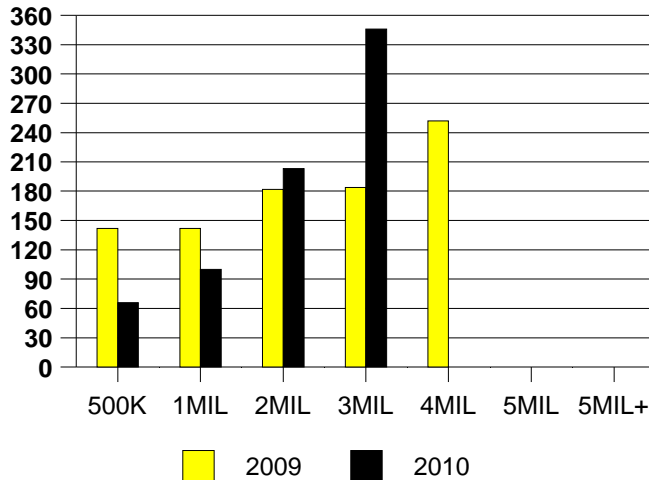
Inventory not shown where no sales
OAK CLIFF MONTHS OF INVENTORY



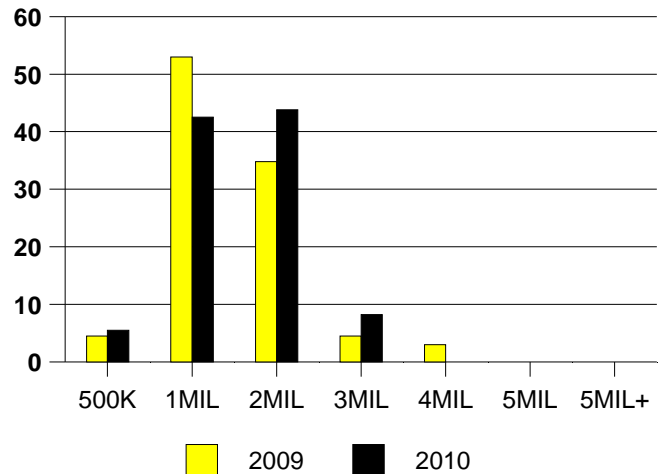
NTREIS Sold informaton as of 10/02/2010

	<u>2009</u>	<u>2010</u>
Total Sold Volume	\$ 76,227,800	\$ 83,875,304
Number of Sales	66	73
Median Sale Price	\$ 893,650	\$ 1,010,000

DAYS ON THE MARKET (UNIV PARK)



MKT SHARE BY PRICE RANGE(UP)



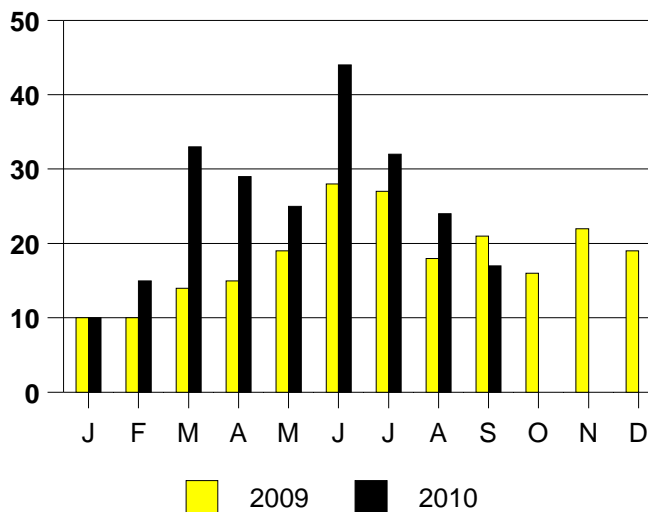
SALE/LIST PRICE RATIO

0K-500K	97.0%
501K-1MIL	95.0%
1MIL-2MIL	93.8%
2MIL-3MIL	97.8%
3MIL-4MIL	NONE
4MIL-5MIL	NONE
5MIL+	NONE

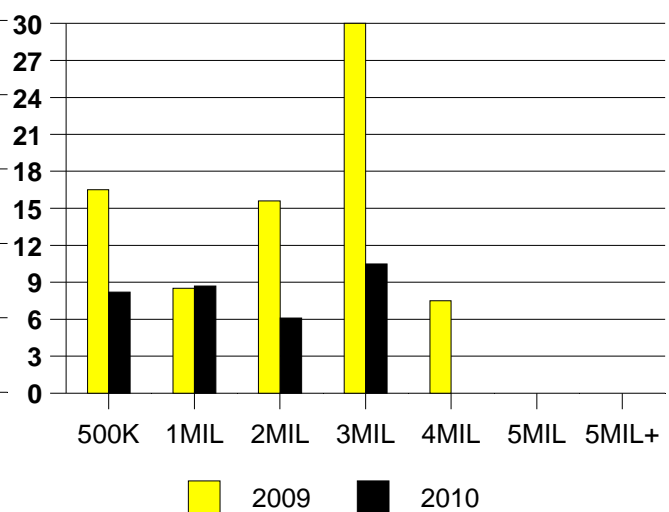
AVERAGE OVERPRICING

Orig List Price to Sale Price	
2009	16.0%
2010	11.9%

UNIVERSITY PARK MONTHLY SALES



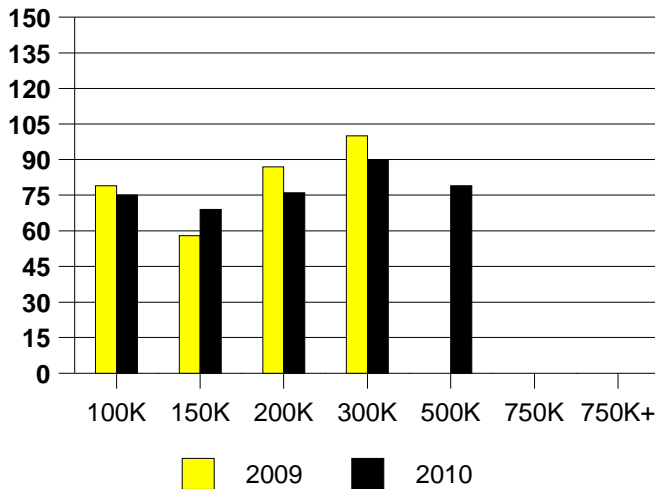
**Inventory not shown where no sales
UNIV PARK MONTHS OF INVENTORY**



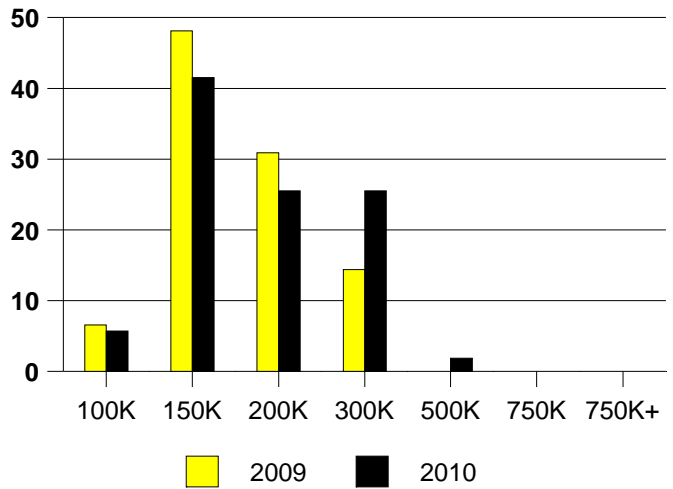
NTREIS Sold information as of 10/02/2010

	<u>2009</u>	<u>2010</u>
Total Sold Volume	\$ 27,988,476	\$ 18,052,872
Number of Sales	181	106
Median Sale Price	\$ 146,025	\$ 158,250

DAYS ON THE MARKET (WYLIE)



WYLIE MKT SHARE BY PRICE RANGE



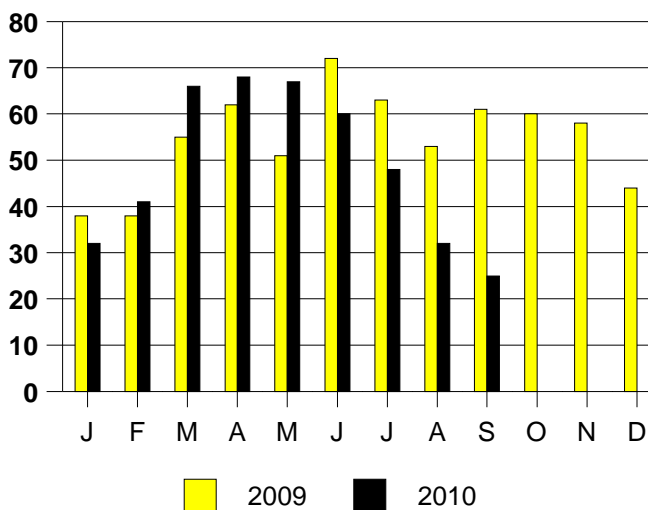
SALE/LIST PRICE RATIO

0K-100K	89.8%
101K-150K	98.7%
151K-200K	97.4%
201K-300K	95.7%
301K-500K	93.2%
501K-750K	NONE
751K+	NONE

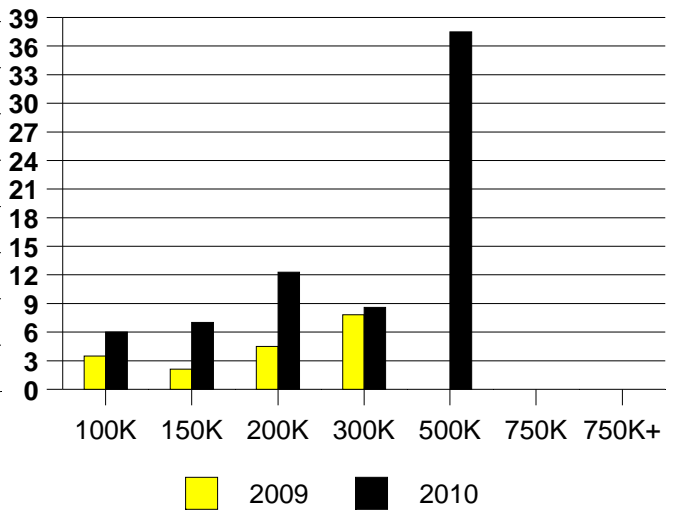
AVERAGE OVERPRICING
Original List Price to Sale Price

2009	5.2%
2010	7.5%

WYLIE MONTHLY SALES



Inventory not shown where no sales
WYLIE MONTHS OF INVENTORY



NTREIS Sold informaton as of 10/02/2010