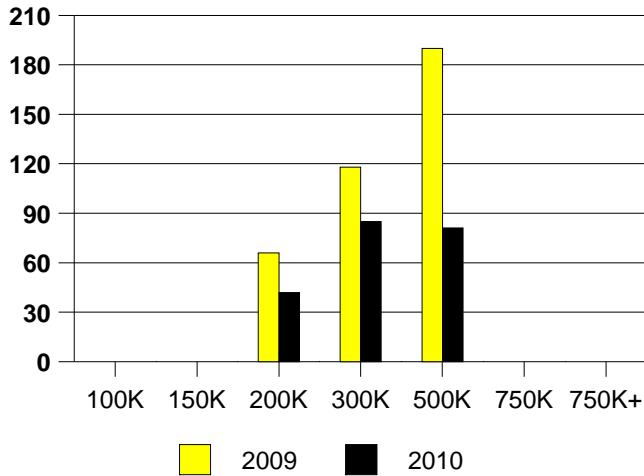
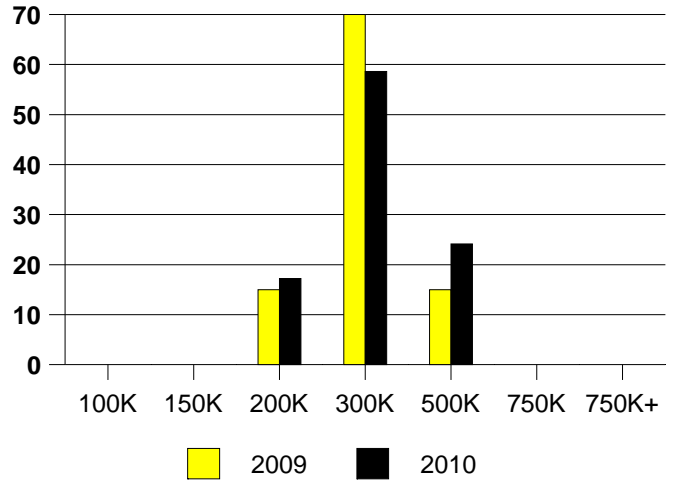


	<u>2009</u>	<u>2010</u>
Total Sold Volume	\$ 5,240,869	\$ 7,794,605
Number of Sales	20	29
Median Sale Price	\$ 252,950	\$ 267,995

**DAYS ON THE MARKET (ADDISON)**



**ADDISON MKT SHARE BY PRICE RANGE**



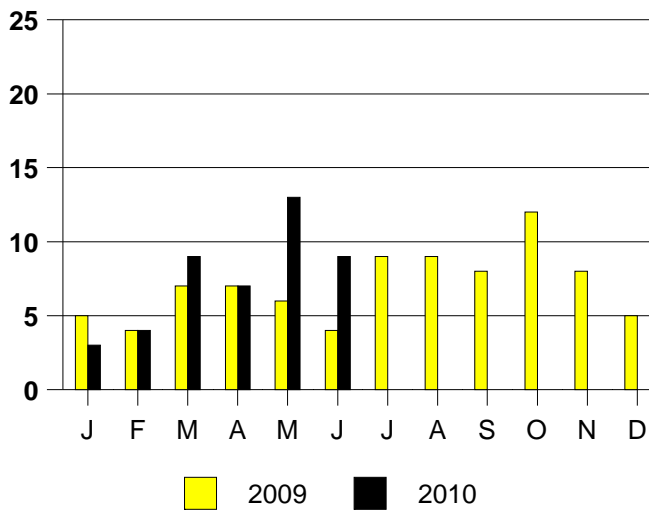
**SALE/LIST PRICE RATIO**

0K-100K	NONE
101K-150K	NONE
151K-200K	98.6%
201K-300K	98.1%
301K-500K	98.6%
501K-750K	NONE
751K+	NONE

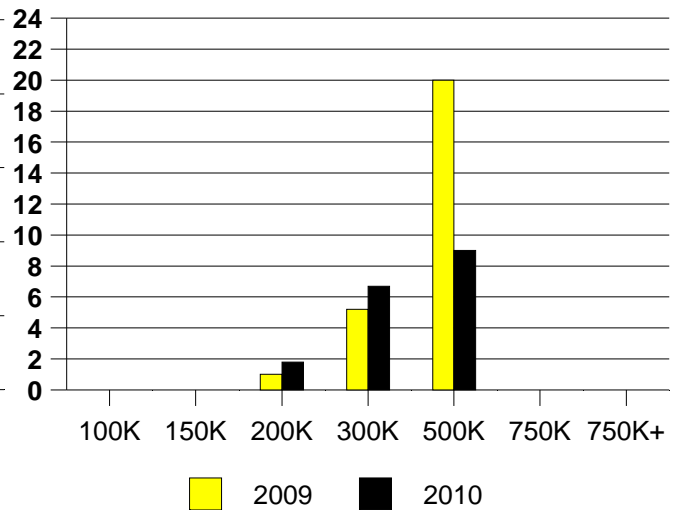
**AVERAGE OVERPRICING**  
Original List Price to Sale Price

2009	9.9%
2010	2.8%

**ADDISON MONTHLY SALES**

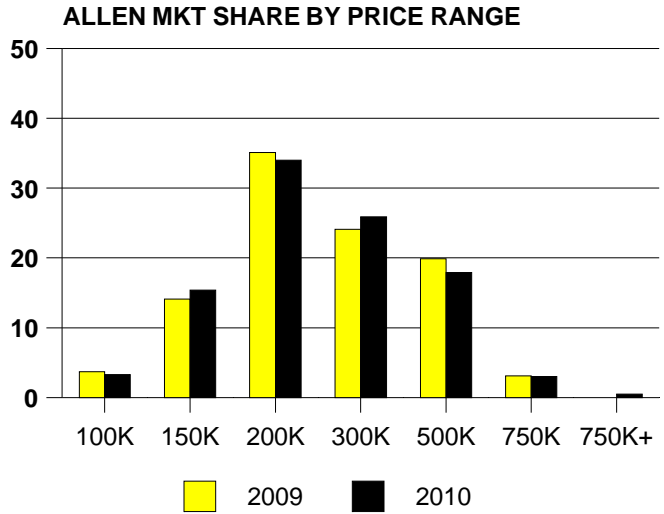
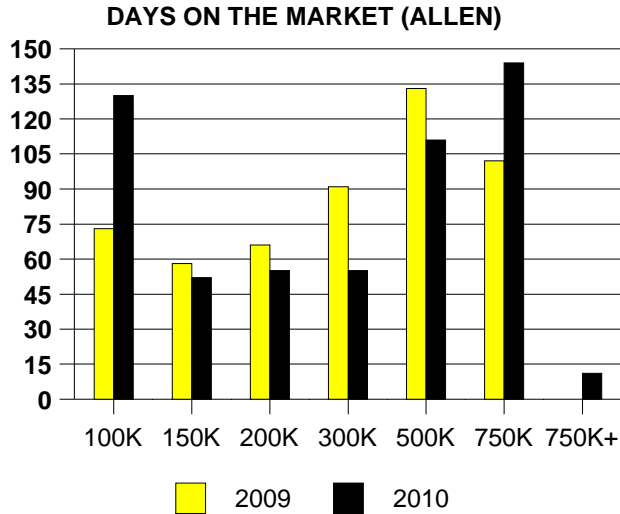


Inventory not shown where no sales  
**ADDISON MONTHS OF INVENTORY**



NTREIS Sold informaton as of 07/03/2010

	2009	2010
Total Sold Volume	\$ 89,564,400	\$ 99,479,752
Number of Sales	382	429
Median Sale Price	\$ 196,750	\$ 195,000



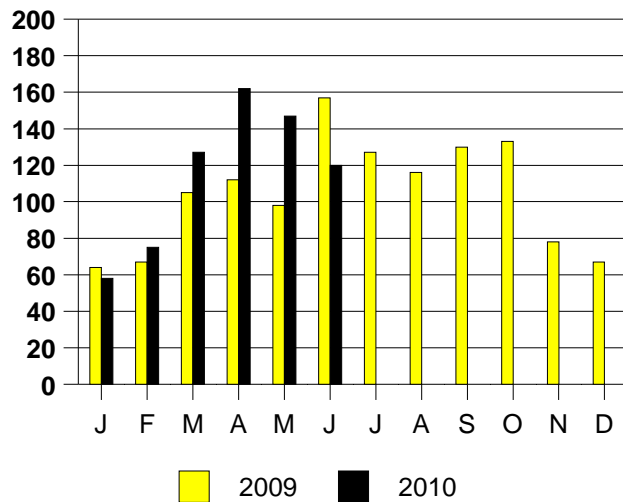
**SALE/LIST PRICE RATIO**

0K-100K	98.2%
101K-150K	98.4%
151K-200K	97.9%
201K-300K	97.1%
301K-500K	96.0%
501K-750K	93.2%
751K+	98.9%

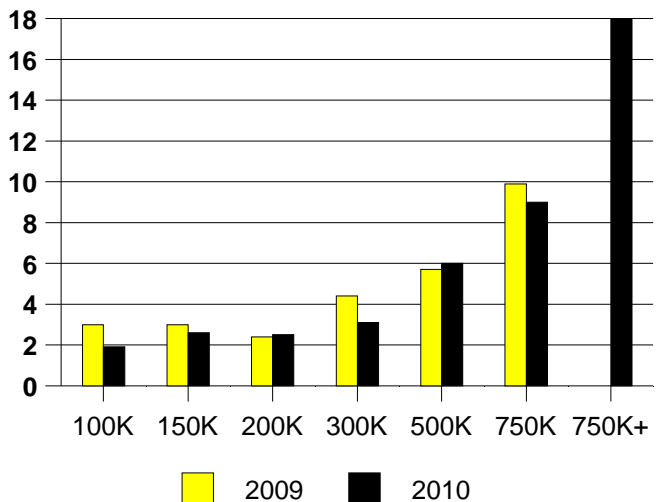
**AVERAGE OVERPRICING**  
Original List Price to Sale Price

2009	6.4%
2010	4.9%

**ALLEN MONTHLY SALES**



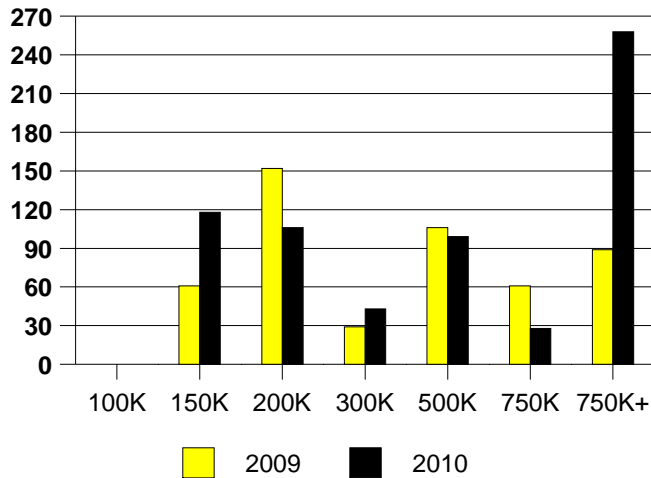
**ALLEN MONTHS OF INVENTORY**



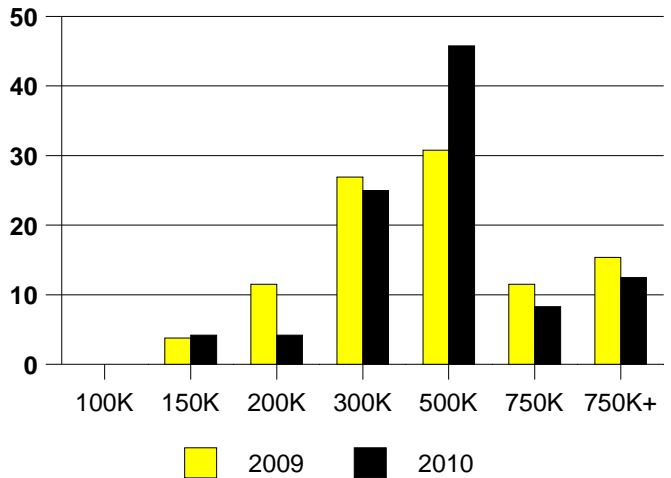
NTREIS Sold informaton as of 07/03/2010

	<u>2009</u>	<u>2010</u>
Total Sold Volume	\$ 11,848,550	\$ 10,905,870
Number of Sales	26	24
Median Sale Price	\$ 329,750	\$ 336,000

**DAYS ON THE MARKET (ARGYLE)**



**ARGYLE MKT SHARE BY PRICE RANGE**



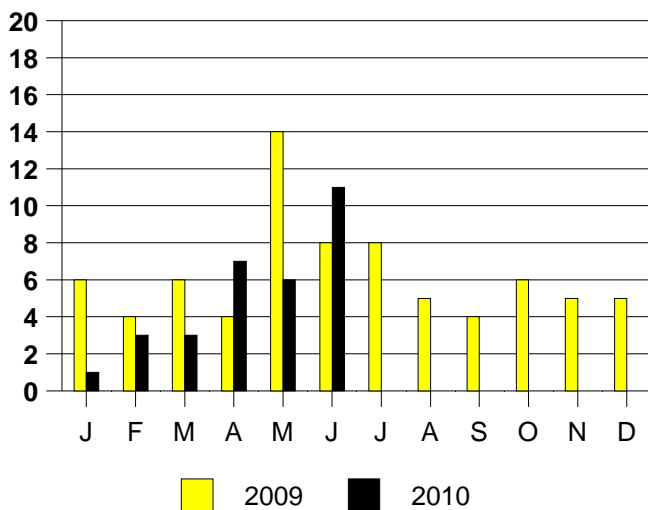
**SALE/LIST PRICE RATIO**

0K-100K	NONE
101K-150K	99.0%
151K-200K	94.8%
201K-300K	95.8%
301K-500K	96.0%
501K-750K	98.2%
751K+	92.4%

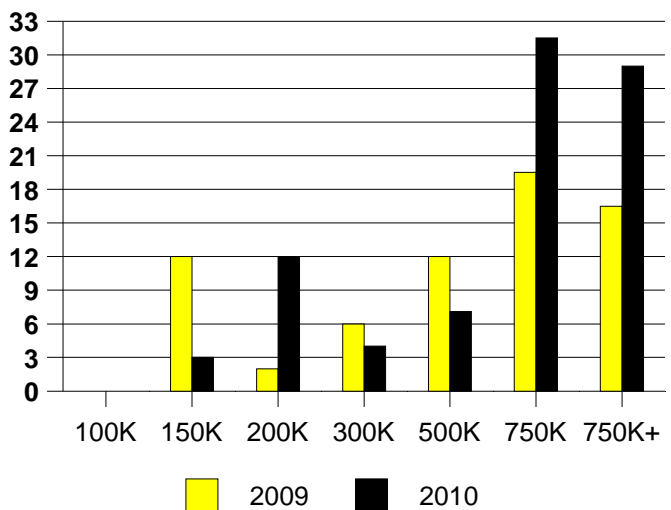
**AVERAGE OVERPRICING**  
Original List Price to Sale Price

2009	5.4%
2010	8.9%

**ARGYLE MONTHLY SALES**



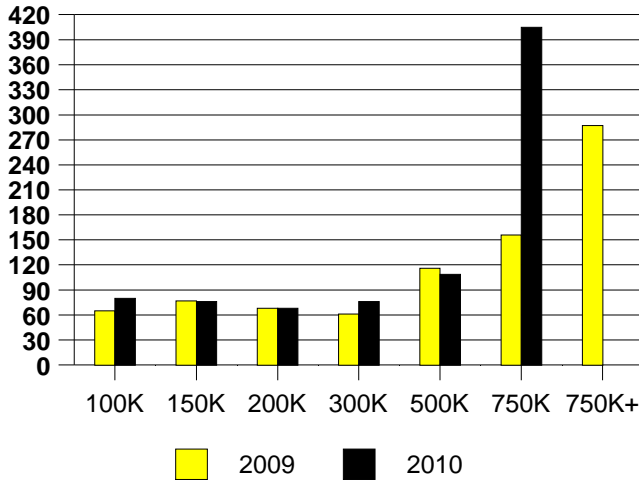
Inventory not shown where no sales  
**ARGYLE MONTHS OF INVENTORY**



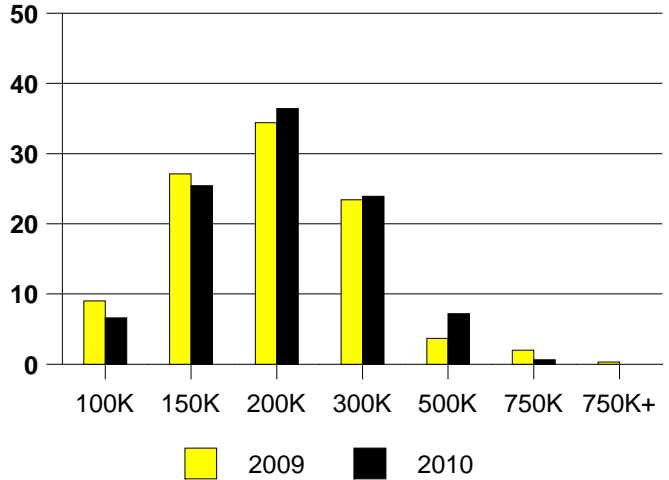
NTREIS Sold informaton as of 07/03/2010

	2009	2010
Total Sold Volume	\$ 55,556,752	\$ 62,935,256
Number of Sales	299	335
Median Sale Price	\$ 167,500	\$ 170,363

DAYS ON MARKET(CARROLLTON)



CARROLLTON MKT SHARE BY PRICE RANGE



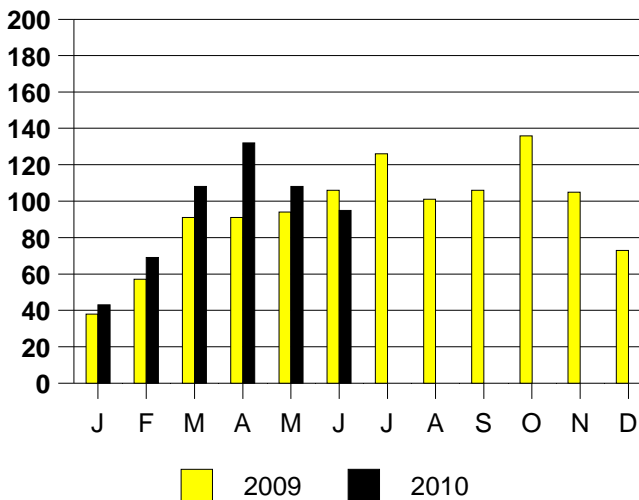
SALE/LIST PRICE RATIO

0K-100K	95.4%
101K-150K	97.2%
151K-200K	97.9%
201K-300K	97.2%
301K-500K	95.7%
501K-750K	96.1%
751K+	NONE

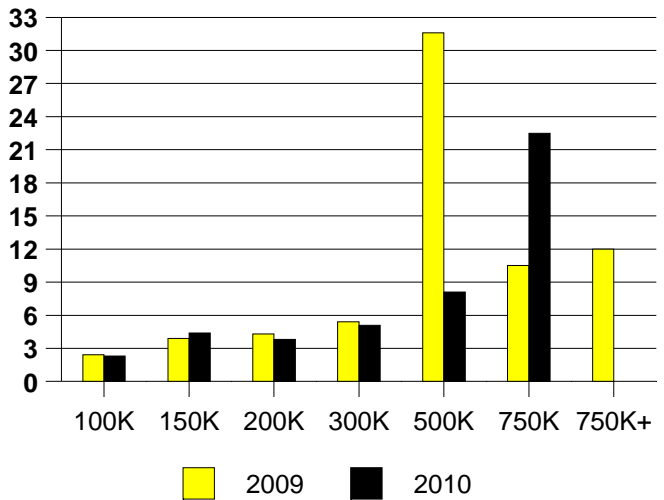
AVERAGE OVERPRICING  
Original List Price to Sale Price

2009	6.1%
2010	5.7%

CARROLLTON MONTHLY SALES



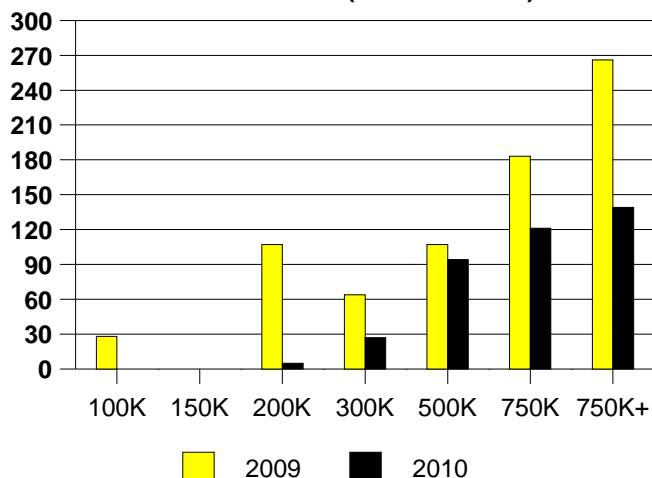
CARROLLTON MONTHS OF INVENTORY



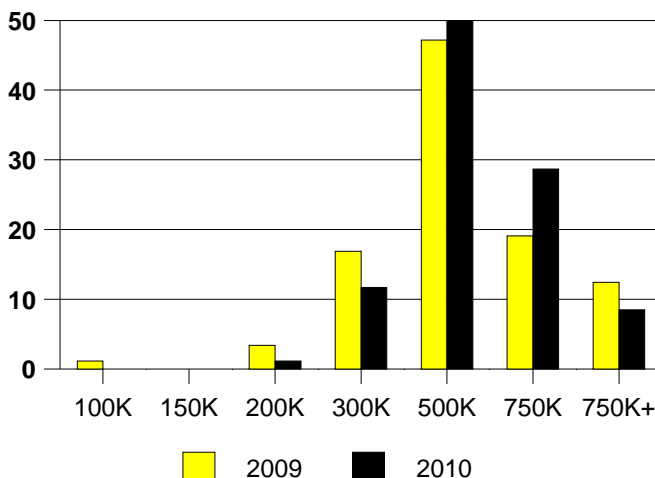
NTREIS Sold informaton as of 07/03/2010

	2009	2010
Total Sold Volume	\$ 42,549,564	\$ 44,605,740
Number of Sales	89	94
Median Sale Price	\$ 420,000	\$ 439,900

**DAYS ON THE MARKET (COLLEYVILLE)**



**COLLEYVILLE MKT SHARE BY PRICE RANGE**



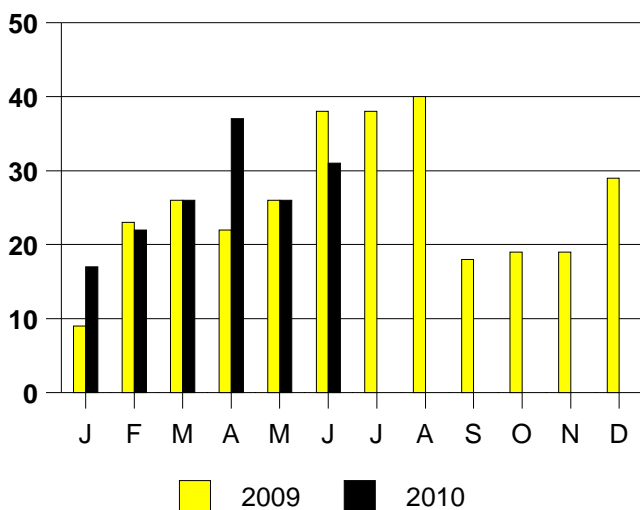
**SALE/LIST PRICE RATIO**

0K-100K	NONE
101K-150K	NONE
151K-200K	100.0%
201K-300K	97.3%
301K-500K	96.1%
501K-750K	97.0%
751K+	95.5%

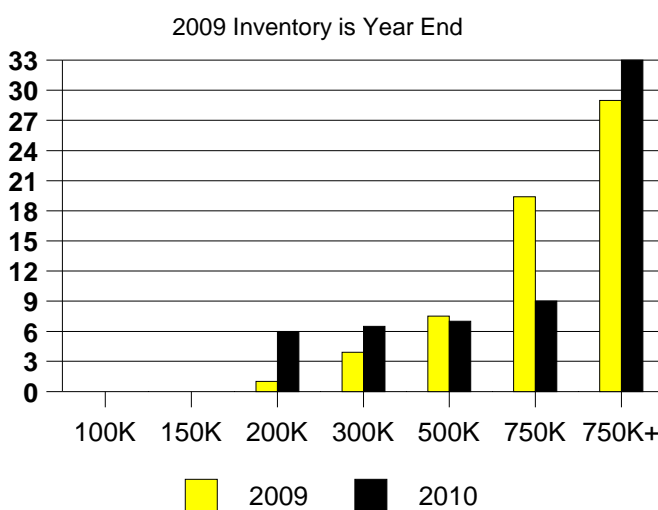
**AVERAGE OVERPRICING**  
Original List Price to Sale Price

2009	7.6%
2010	6.2%

**COLLEYVILLE MONTHLY SALES**



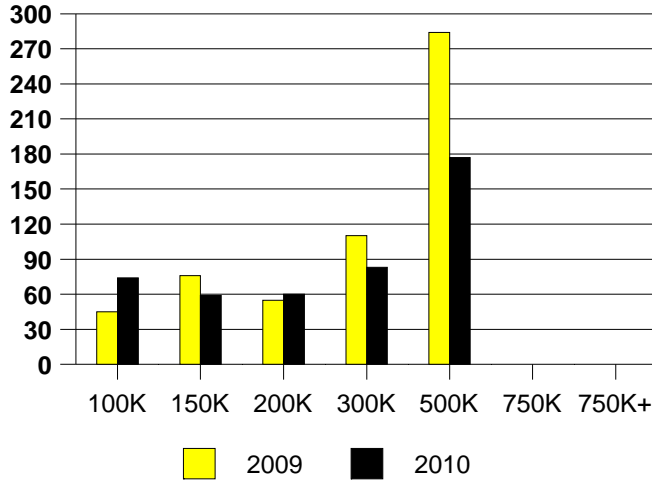
**COLLEYVILLE MONTHS OF INVENTORY**  
Inventory not shown where no sales



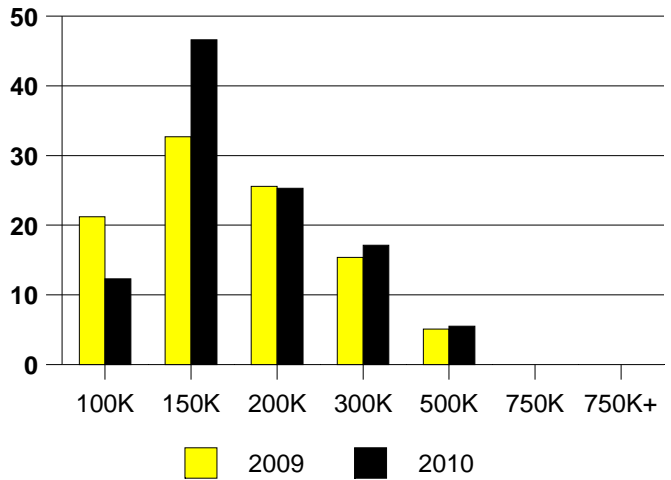
NTREIS Sold informaton as of 07/03/2010

	2009	2010
Total Sold Volume	\$ 24,649,392	\$ 23,990,178
Number of Sales	156	146
Median Sale Price	\$ 141,000	\$ 149,500

DAYS ON THE MARKET (COLONY)



COLONY MKT SHARE BY PRICE RANGE



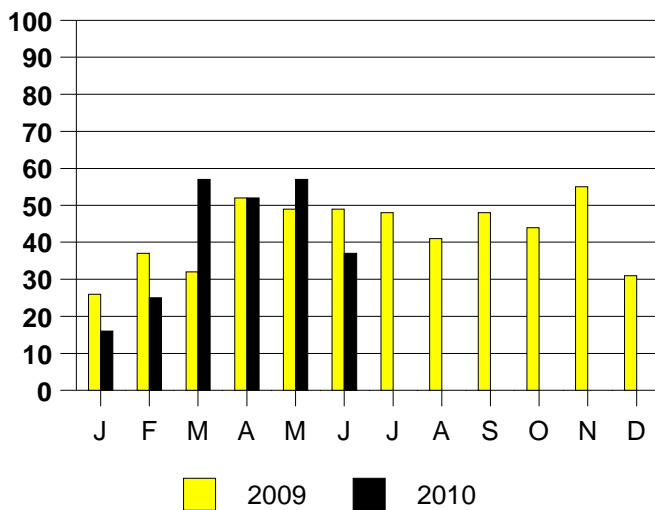
SALE/LIST PRICE RATIO

0K-100K	98.0%
101K-150K	98.7%
151K-200K	98.4%
201K-300K	97.6%
301K-500K	94.0%
501K-750K	NONE
751K+	NONE

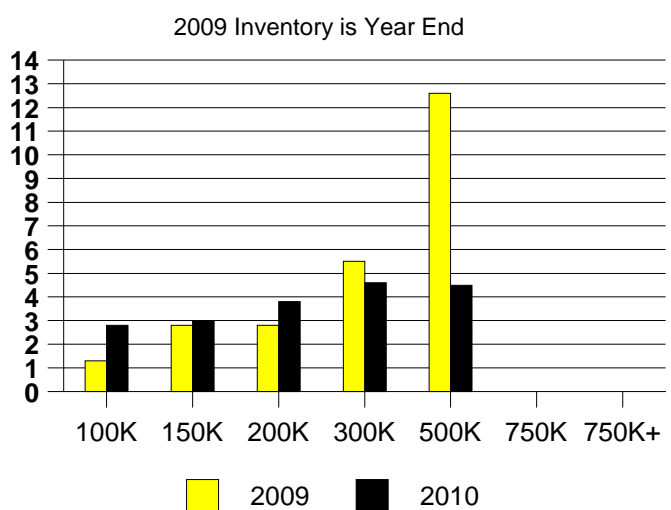
AVERAGE OVERPRICING  
Original List Price to Sale Price

2009	5.1%
2010	4.4%

THE COLONY MONTHLY SALES



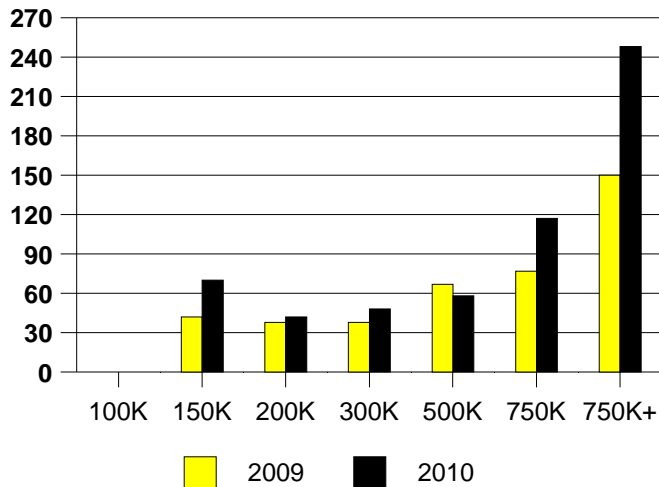
THE COLONY MONTHS OF INVENTORY



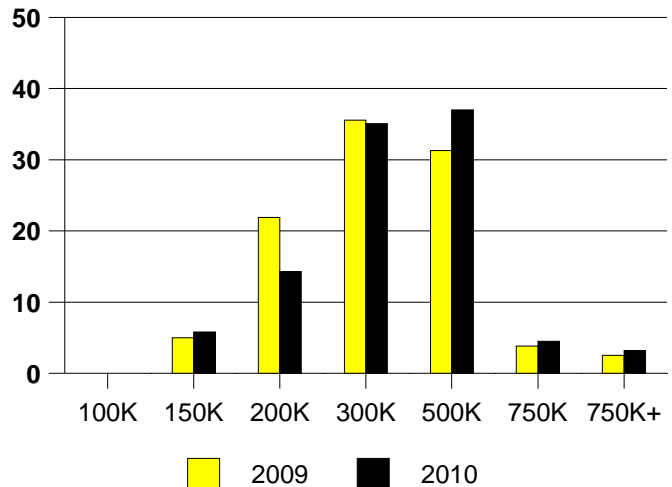
NTREIS Sold informaton as of 07/03/2010

	<u>2009</u>	<u>2010</u>
Total Sold Volume	\$ 47,390,748	\$ 48,437,224
Number of Sales	160	154
Median Sale Price	\$ 262,500	\$ 281,500

**DAYS ON THE MARKET (COPPELL)**



**COPPELL MKT SHARE BY PRICE RANGE**



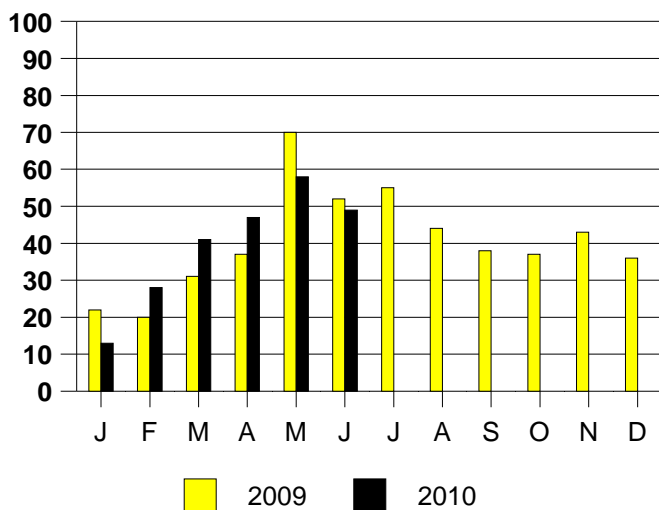
**SALE/LIST PRICE RATIO**

0K-100K	NONE
101K-150K	96.4%
151K-200K	99.2%
201K-300K	97.4%
301K-500K	97.6%
501K-750K	94.3%
751K+	97.6%

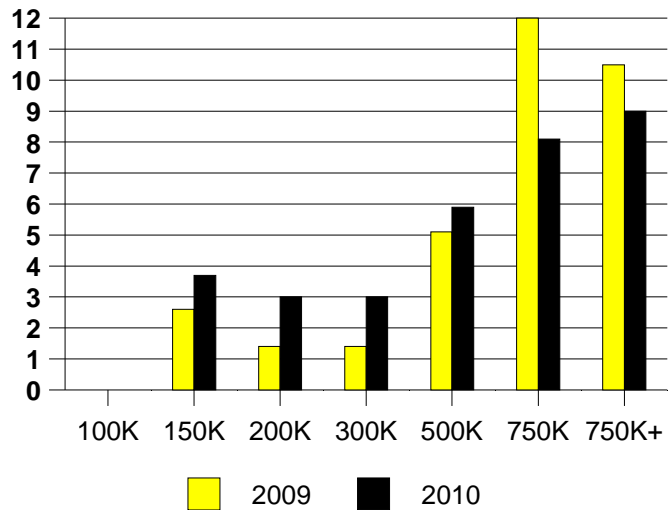
**AVERAGE OVERPRICING**  
Original List Price to Sale Price

2009	2.3%
2010	4.4%

**COPPELL MONTHLY SALES**



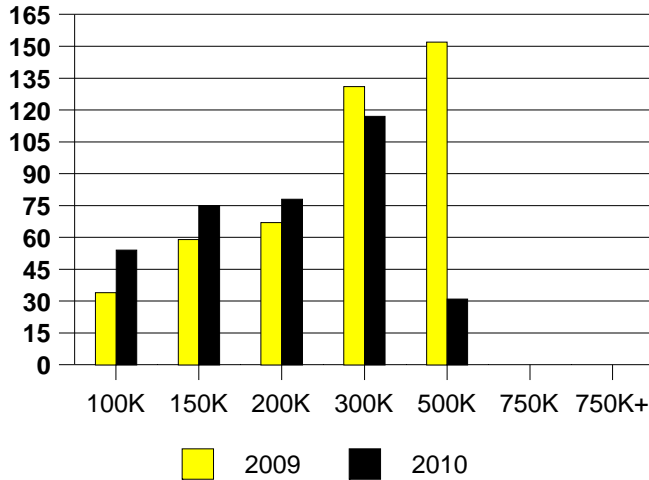
Inventory not shown where no sales  
**COPPELL MONTHS OF INVENTORY**



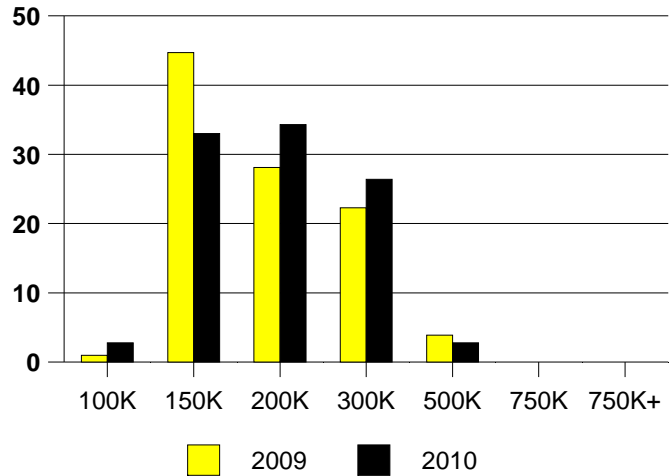
NTREIS Sold informaton as of 07/03/2010

	<u>2009</u>	<u>2010</u>
Total Sold Volume	\$ 18,166,192	\$ 19,281,696
Number of Sales	103	106
Median Sale Price	\$ 153,000	\$ 166,000

**DAYS ON THE MARKET (CORINTH)**



**CORINTH MKT SHARE BY PRICE RANGE**



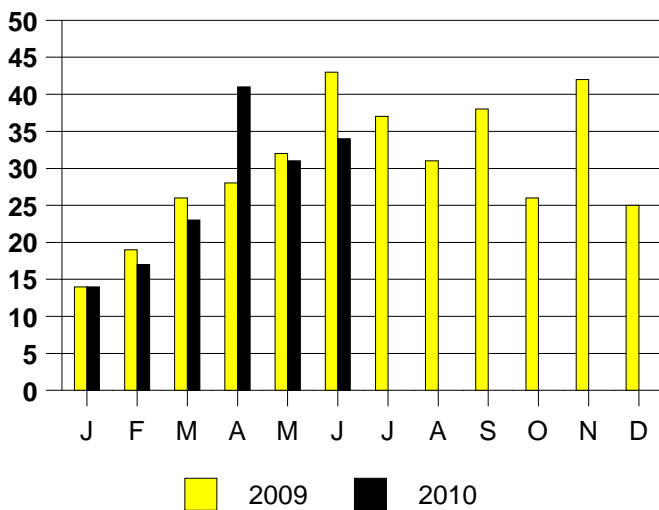
**SALE/LIST PRICE RATIO**

0K-100K	98.7%
101K-150K	99.1%
151K-200K	98.6%
201K-300K	97.3%
301K-500K	95.8%
501K-750K	NONE
751K+	NONE

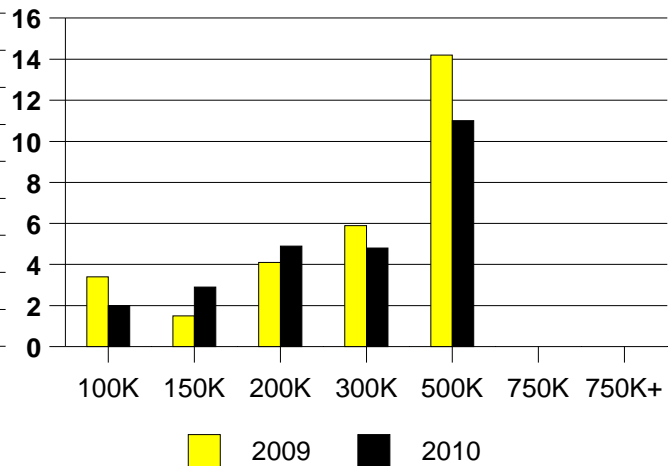
**AVERAGE OVERPRICING**  
Original List Price to Sale Price

2009	5.4%
2010	5.3%

**CORINTH MONTHLY SALES**



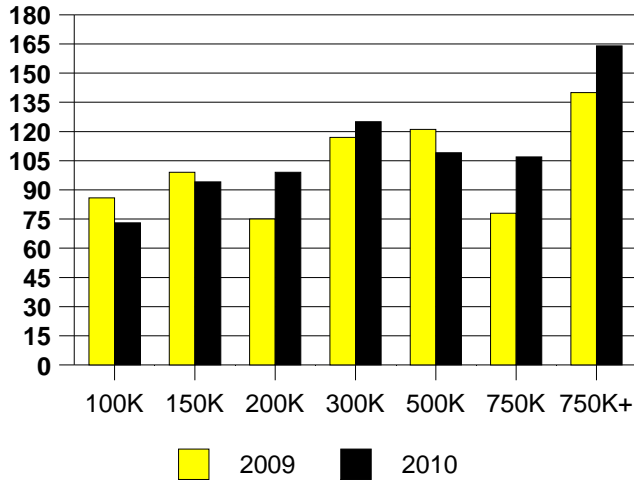
Inventory not shown where no sales  
**CORINTH MONTHS OF INVENTORY**  
2009 Inventory is Year End



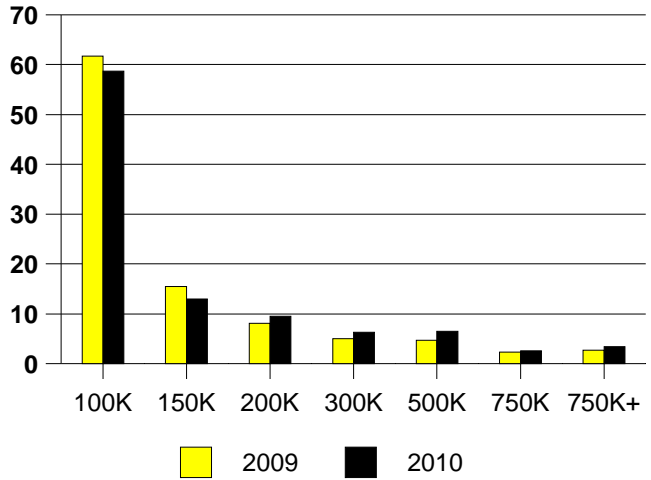
NTREIS Sold informaton as of 07/03/2010

	2009	2010
Total Sold Volume	\$ 93,753,656	\$ 114,927,176
Number of Sales	664	682
Median Sale Price	\$ 78,950	\$ 85,000

DAYS ON THE MARKET (DALLAS)



DALLAS MKT SHARE BY PRICE RANGE



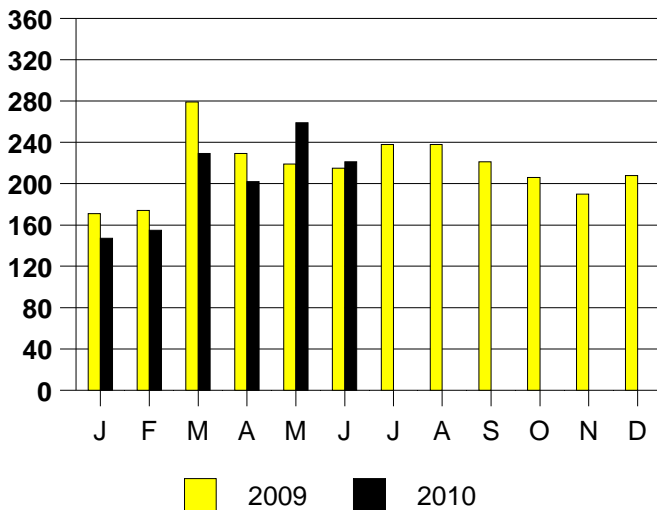
SALE/LIST PRICE RATIO

0K-100K	98.6%
101K-150K	98.2%
151K-200K	97.3%
201K-300K	96.5%
301K-500K	95.8%
501K-750K	94.6%
751K+	94.6%

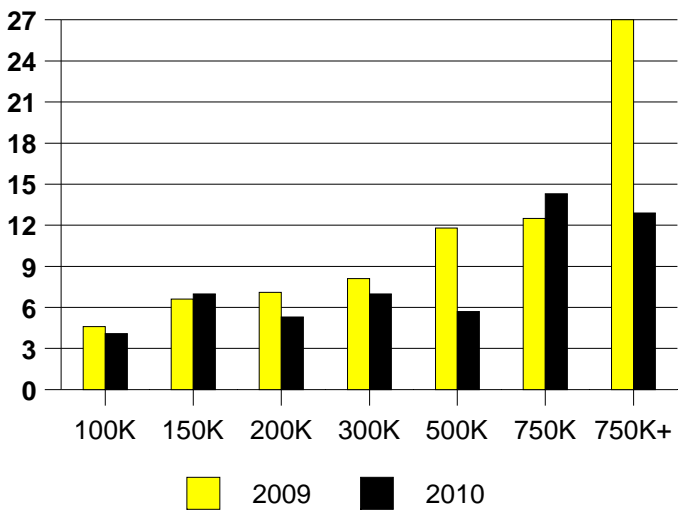
AVERAGE OVERPRICING  
Original List Price to Sale Price

2009	13.7%
2010	8.5%

DALLAS MONTHLY SALES



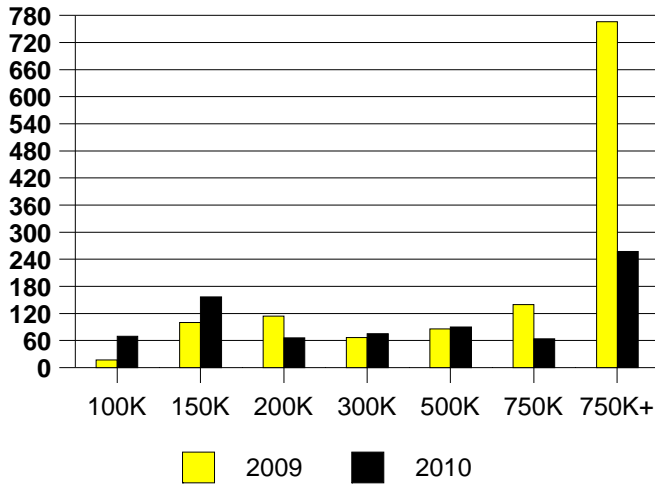
Inventory not shown where no sales  
DALLAS MONTHS OF INVENTORY



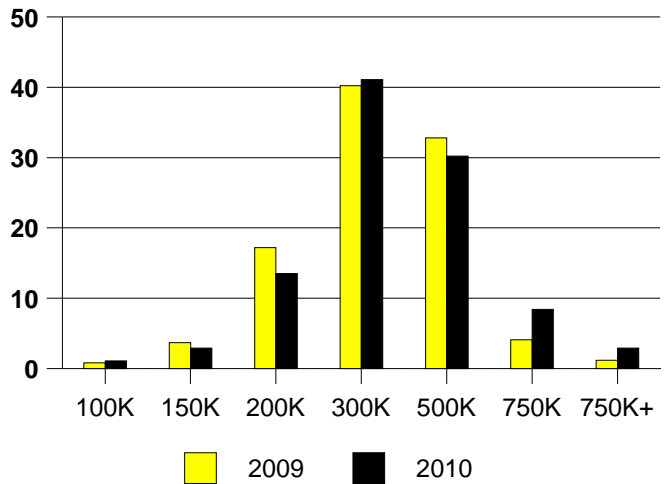
NTREIS Sold informaton as of 07/03/2010

	<u>2009</u>	<u>2010</u>
Total Sold Volume	\$ 74,111,280	\$ 88,536,456
Number of Sales	244	275
Median Sale Price	\$ 260,500	\$ 275,000

**DAYS ON THE MARKET (AREA 10)**



**AREA 10 MKT SHARE BY PRICE RANGE**



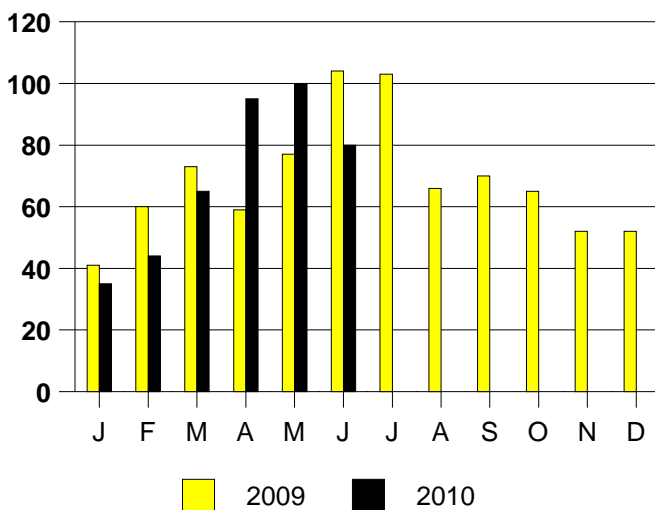
**SALE/LIST PRICE RATIO**

0K-100K	83.2%
101K-150K	97.1%
151K-200K	96.6%
201K-300K	96.9%
301K-500K	97.3%
501K-750K	96.9%
751K+	92.6%

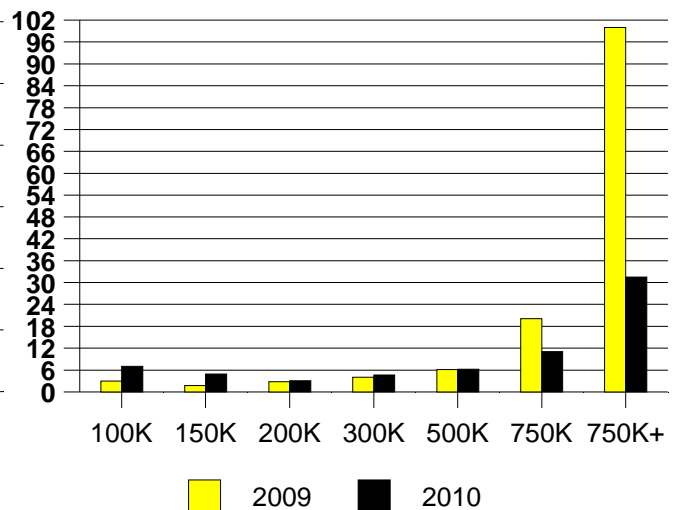
**AVERAGE OVERPRICING**  
Original List Price to Sale Price

2009	7.5%
2010	7.0%

**AREA 10 MONTHLY SALES**

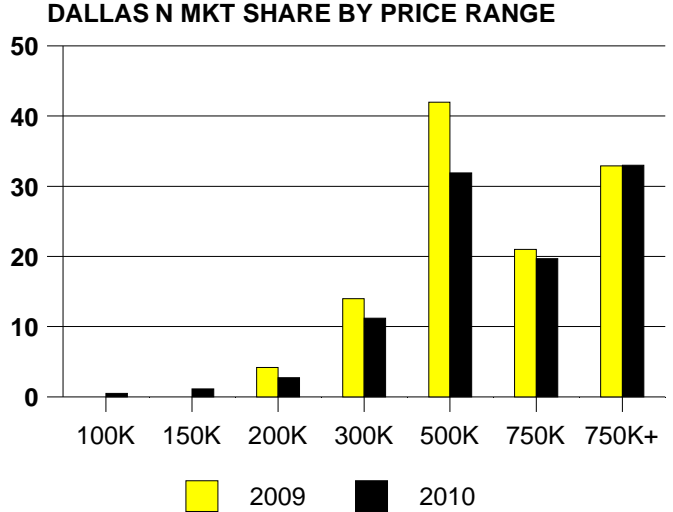
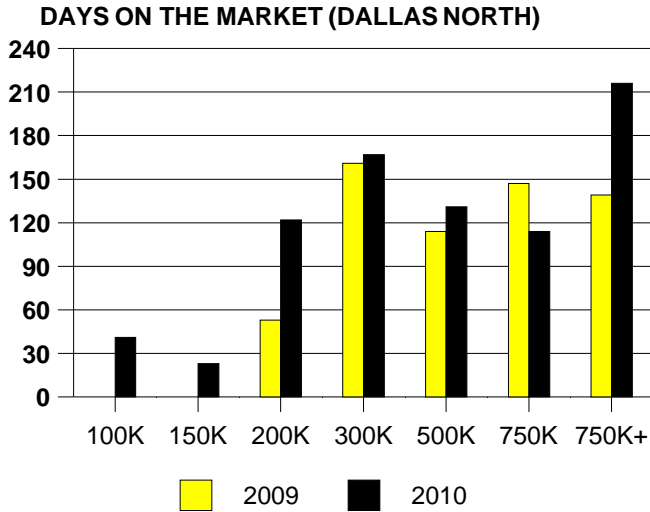


Inventory not shown where no sales  
**AREA 10 MONTHS OF INVENTORY**



NTREIS Sold informaton as of 07/03/2010

	<u>2009</u>	<u>2010</u>
Total Sold Volume	\$ 105,848,056	\$ 148,090,272
Number of Sales	143	188
Median Sale Price	\$ 525,000	\$ 526,500

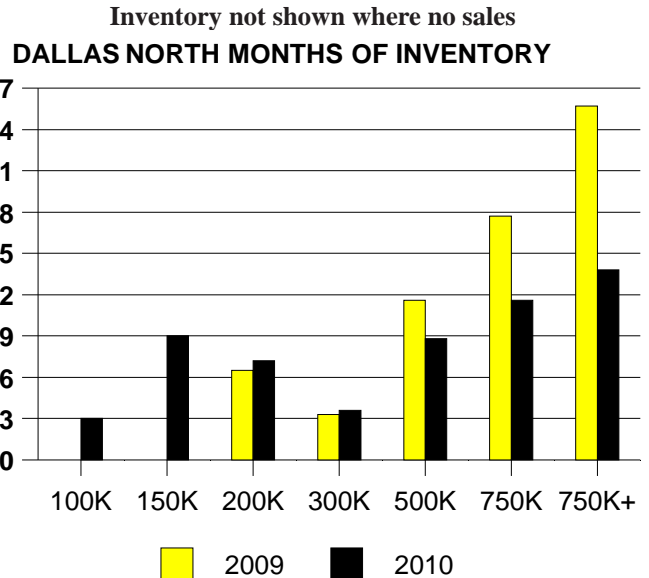
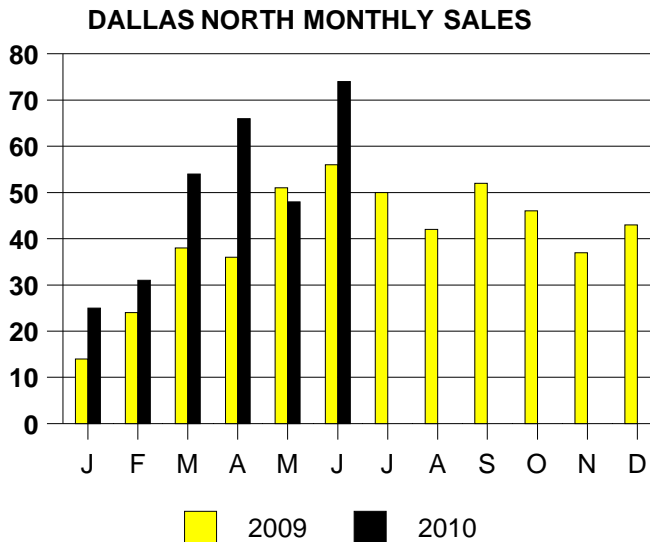


**SALE/LIST PRICE RATIO**

0K-100K	94.5%
101K-150K	93.5%
151K-200K	93.8%
201K-300K	92.9%
301K-500K	94.8%
501K-750K	94.1%
751K+	94.6%

**AVERAGE OVERPRICING**  
Original List Price to Sale Price

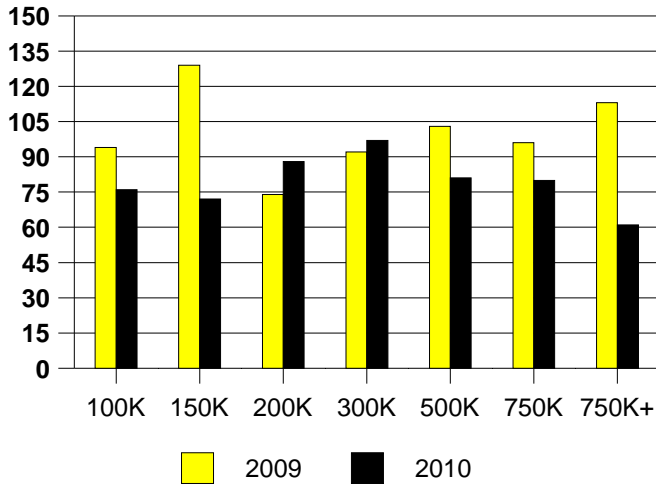
2009	13.3%
2010	14.5%



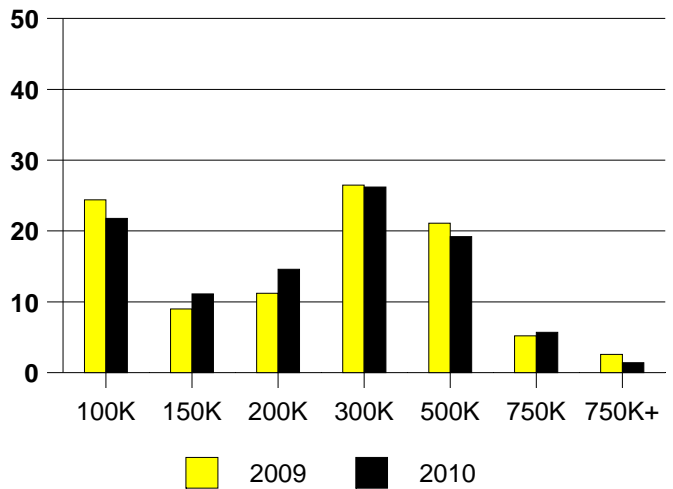
NTREIS Sold informaton as of 07/03/2010

	2009	2010
Total Sold Volume	\$ 142,307,216	\$ 138,807,648
Number of Sales	578	583
Median Sale Price	\$ 222,800	\$ 216,000

DAYS ON THE MARKET (DALLAS EAST)



DALLAS NE MKT SHARE BY PRICE RANGE



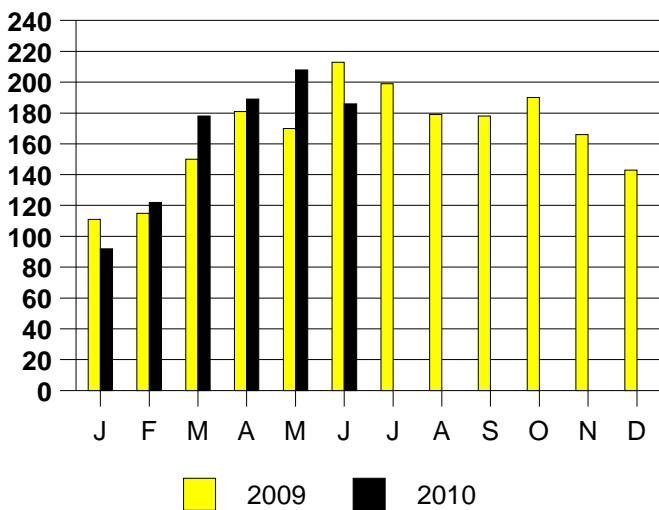
SALE/LIST PRICE RATIO

0K-100K	96.2%
101K-150K	97.2%
151K-200K	98.1%
201K-300K	96.5%
301K-500K	96.7%
501K-750K	96.8%
751K+	97.8%

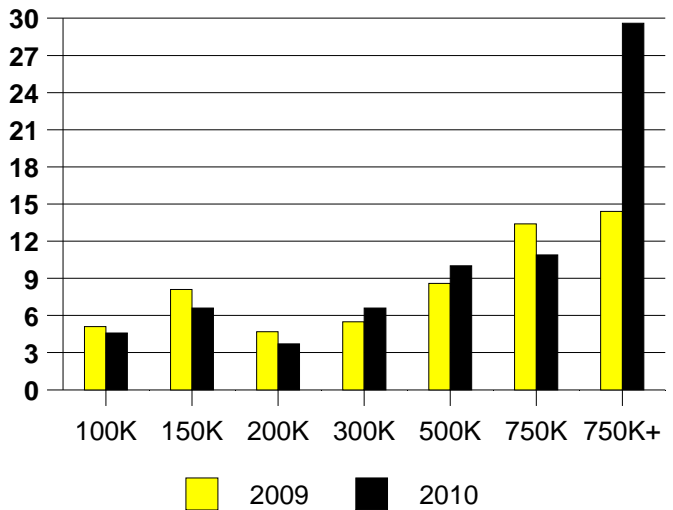
AVERAGE OVERPRICING  
Original List Price to Sale Price

2009	12.1%
2010	8.7%

DALLAS EAST MONTHLY SALES



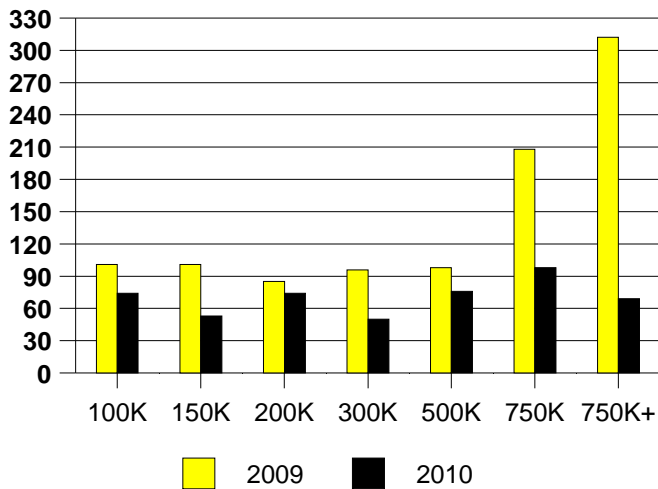
Inventory not shown where no sales  
DALLAS EAST MONTHS OF INVENTORY



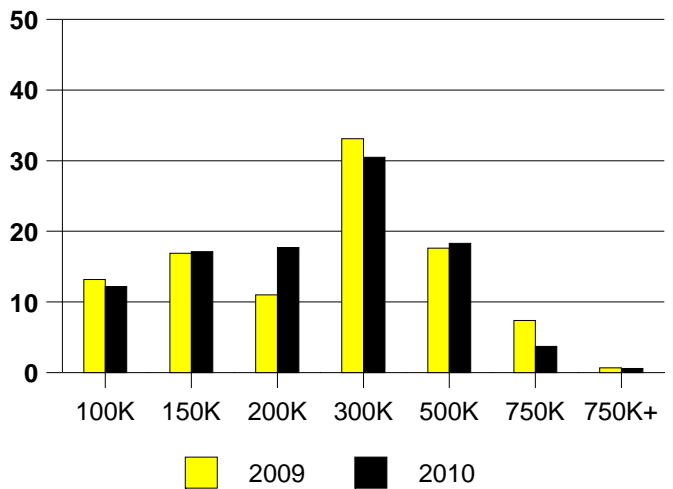
NTREIS Sold informaton as of 07/03/2010

	2009	2010
Total Sold Volume	\$ 33,787,744	\$ 38,189,932
Number of Sales	136	164
Median Sale Price	\$ 223,250	\$ 210,000

DAYS ON THE MARKET (AREA 16)



AREA 16 MKT SHARE BY PRICE RANGE



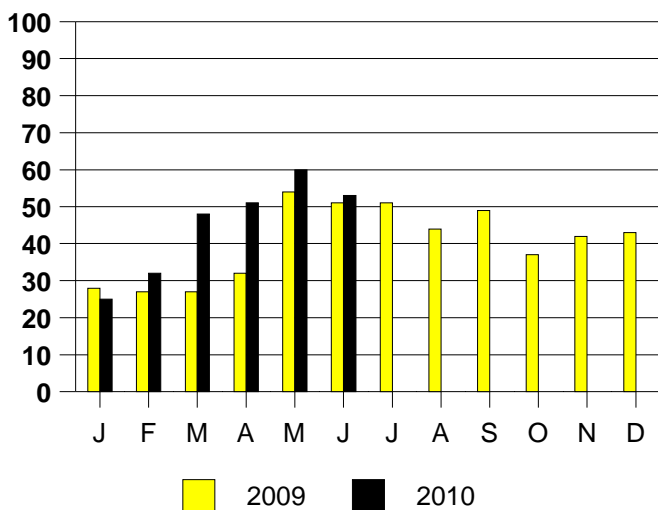
SALE/LIST PRICE RATIO

0K-100K	94.5%
101K-150K	97.8%
151K-200K	97.4%
201K-300K	96.0%
301K-500K	96.9%
501K-750K	98.3%
751K+	93.5%

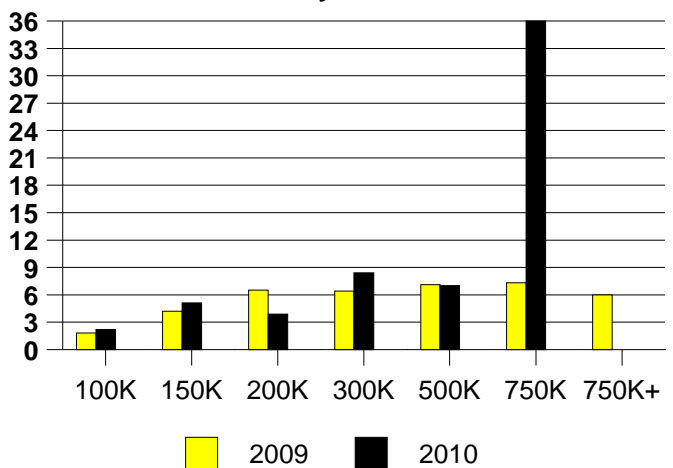
AVERAGE OVERPRICING  
Original List Price to Sale Price

2009	13.3%
2010	8.7%

AREA 16 MONTHLY SALES



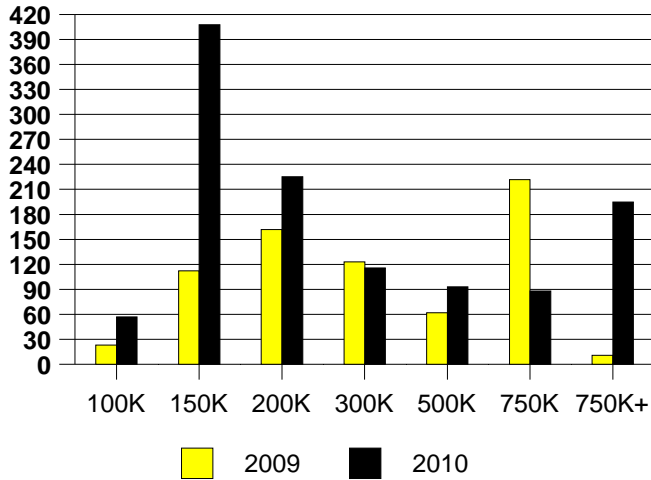
Inventory not shown where no sales  
AREA 16 MONTHS OF INVENTORY  
2009 Inventory is Year End



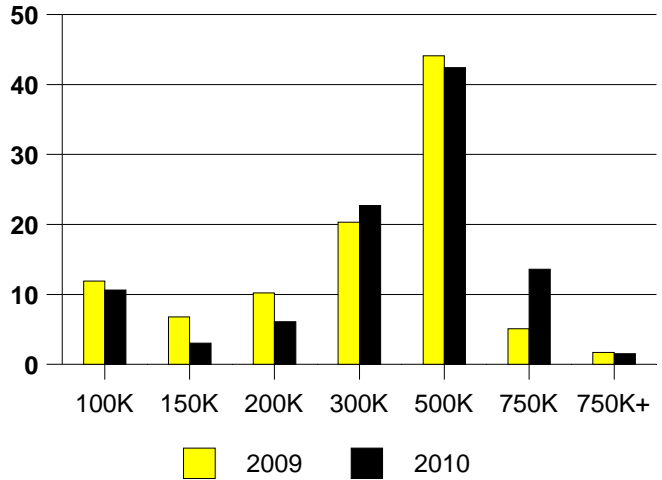
NTREIS Sold informaton as of 07/03/2010

	2009	2010
Total Sold Volume	\$ 19,062,596	\$ 22,690,600
Number of Sales	59	66
Median Sale Price	\$ 310,000	\$ 322,750

DAYS ON THE MARKET (DALLAS OAK LAWN)



DALLAS NE MKT SHARE BY PRICE RANGE



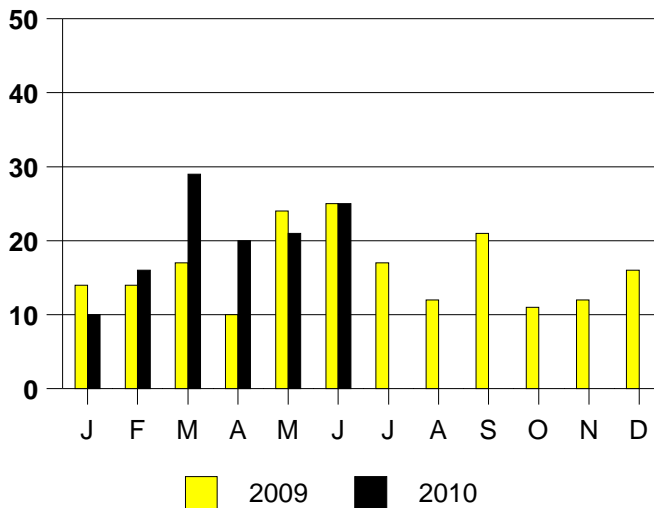
SALE/LIST PRICE RATIO

0K-100K	94.1%
101K-150K	93.1%
151K-200K	97.7%
201K-300K	97.1%
301K-500K	96.7%
501K-750K	96.1%
751K+	100.0%

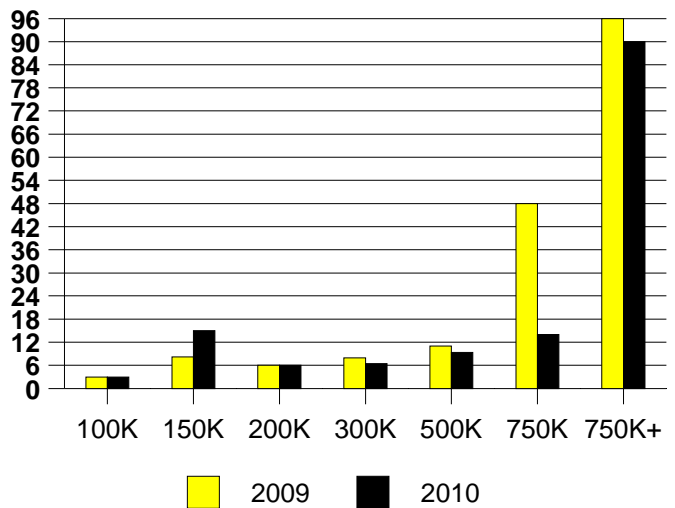
AVERAGE OVERPRICING  
Original List Price to Sale Price

2009	7.2%
2010	9.7%

DALLAS OAKLAWN MONTHLY SALES



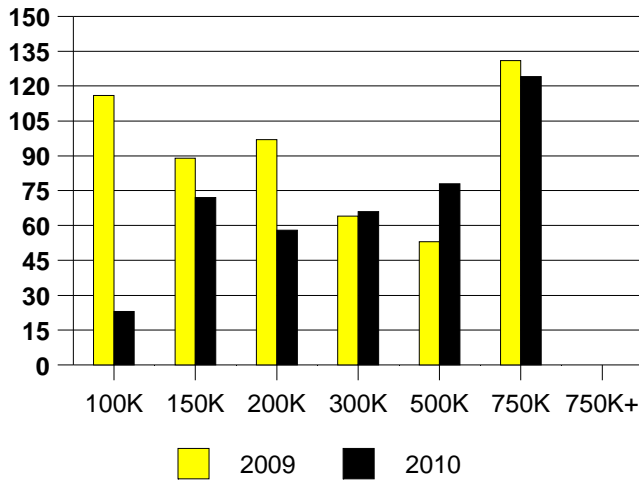
DALLAS OAKLAWN MONTHS OF INVENTORY



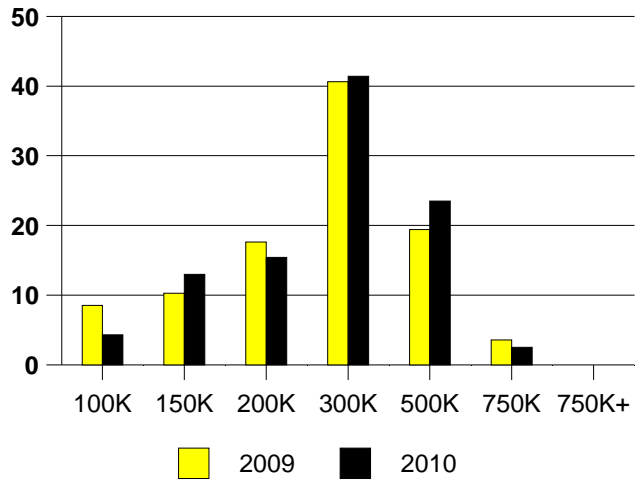
NTREIS Sold informaton as of 07/03/2010

	2009	2010
Total Sold Volume	\$ 39,951,136	\$ 40,667,008
Number of Sales	165	162
Median Sale Price	\$ 236,000	\$ 239,950

DAYS ON THE MARKET (DALLAS NE)



DALLAS NE MKT SHARE BY PRICE RANGE



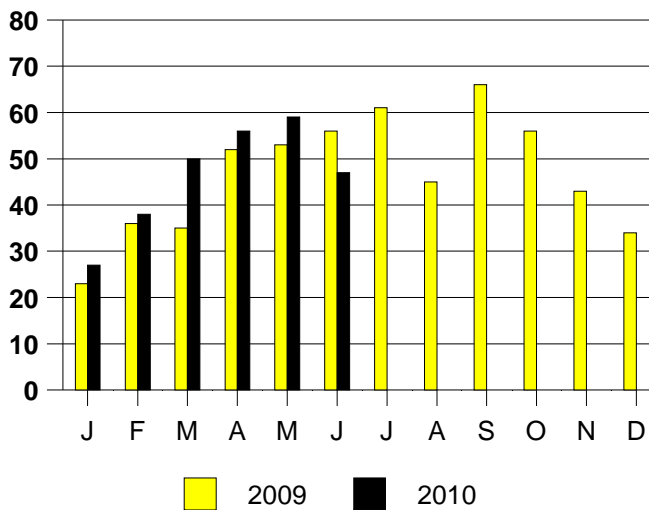
SALE/LIST PRICE RATIO

0K-100K	103.4%
101K-150K	94.6%
151K-200K	96.3%
201K-300K	97.7%
301K-500K	98.0%
501K-750K	97.7%
751K+	NONE

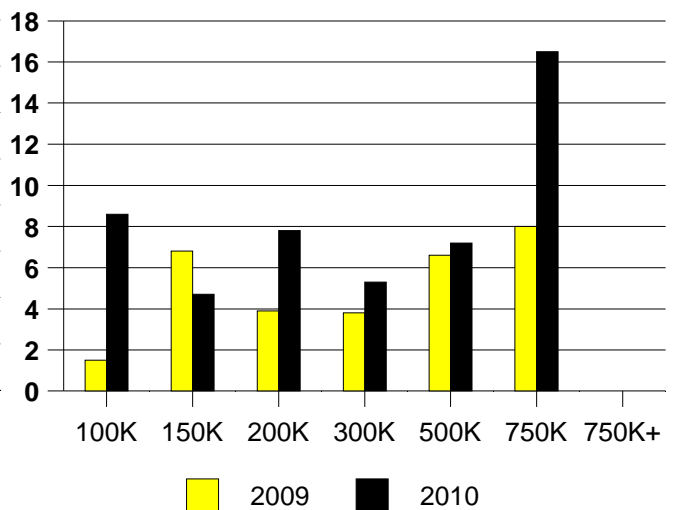
AVERAGE OVERPRICING  
Original List Price to Sale Price

2009	7.7%
2010	5.9%

DALLAS NE MONTHLY SALES



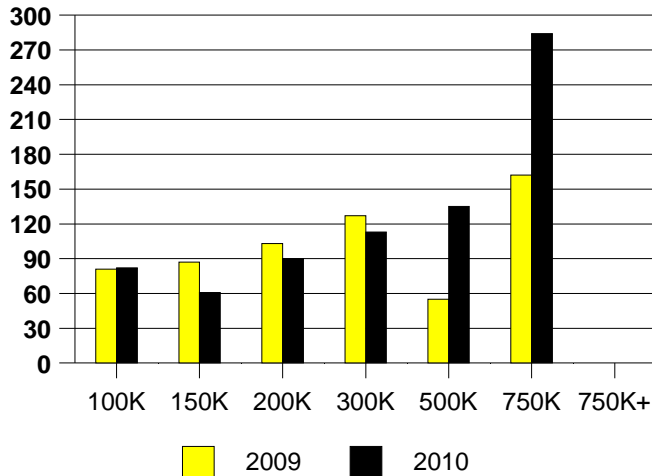
DALLAS NE MONTHS OF INVENTORY



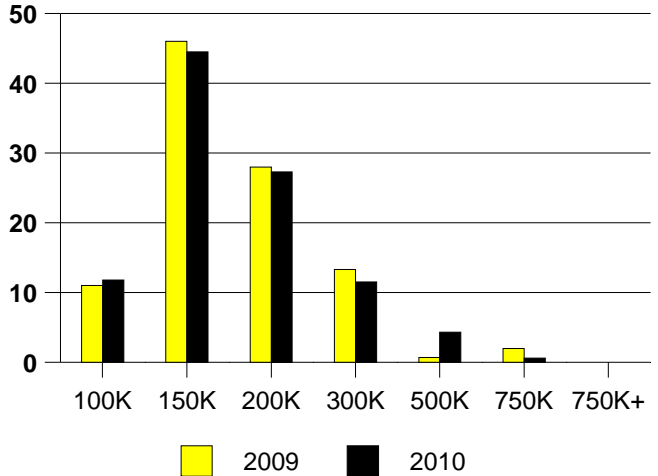
NTREIS Sold informaton as of 07/03/2010

	2009	2010
Total Sold Volume	\$ 46,537,912	\$ 55,160,460
Number of Sales	300	348
Median Sale Price	\$ 142,620	\$ 142,700

DAYS ON THE MARKET (DENTON)



DENTON MARKET SHARE BY PRICE RANGE



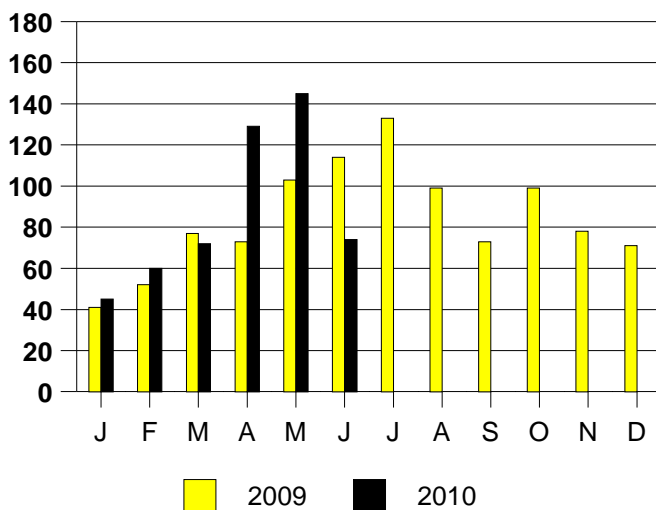
SALE/LIST PRICE RATIO

0K-100K	96.5%
101K-150K	98.9%
151K-200K	98.4%
201K-300K	96.2%
301K-500K	95.8%
501K-750K	97.0%
751K+	NONE

AVERAGE OVERPRICING  
Original List Price to Sale Price

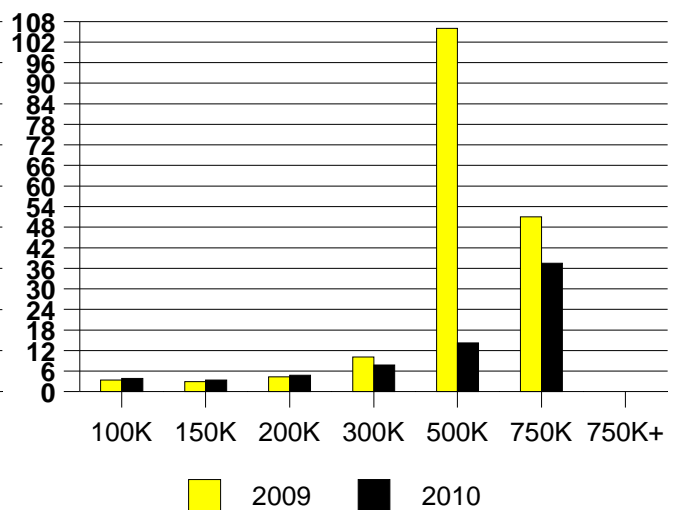
2009	6.0%
2010	4.3%

DENTON MONTHLY SALES



Inventory not shown where no sales

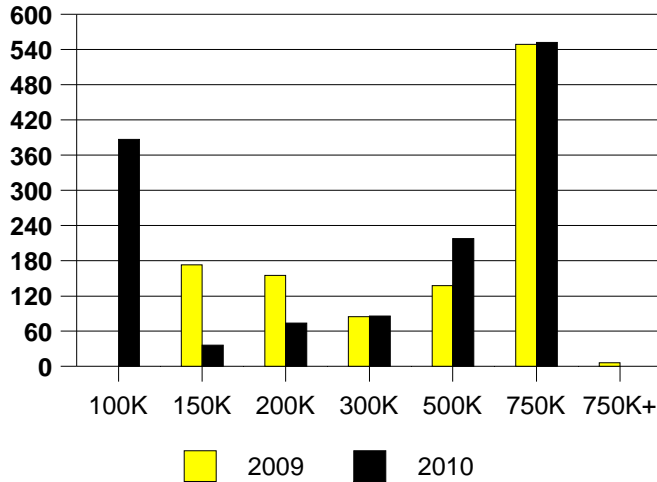
DENTON MONTHS OF INVENTORY



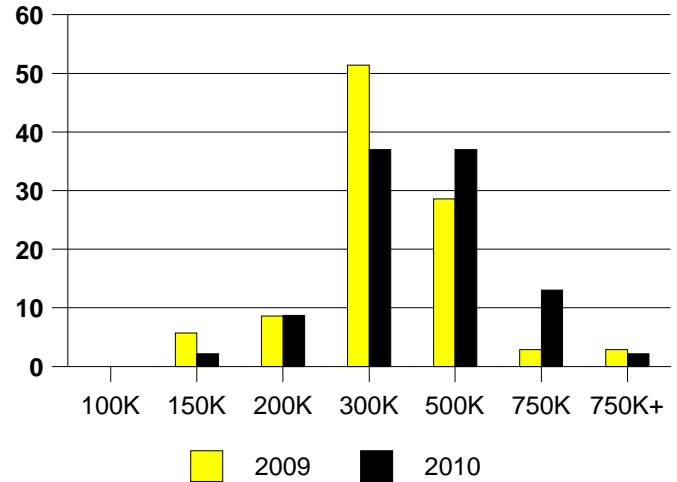
NTREIS Sold informaton as of 07/03/2010

	<u>2009</u>	<u>2010</u>
Total Sold Volume	\$ 10,576,644	\$ 15,830,634
Number of Sales	35	46
Median Sale Price	\$ 343,544	\$ 314,000

**DAYS ON THE MARKET (FAIRVIEW)**



**FAIRVIEW MKT SHARE BY PRICE RANGE**



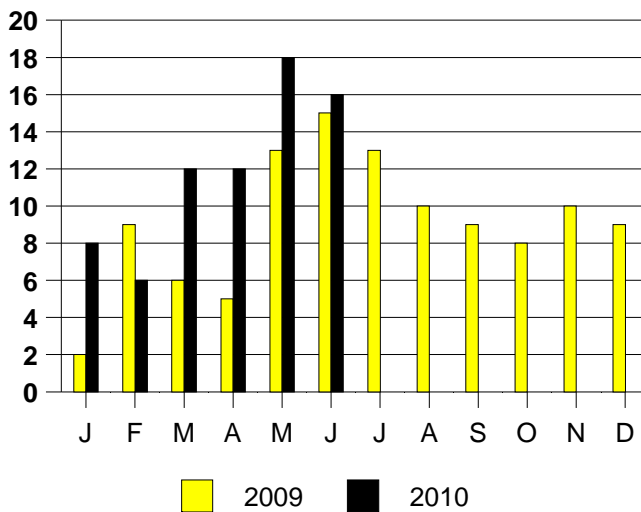
**SALE/LIST PRICE RATIO**

0K-100K	NONE
101K-150K	93.1%
151K-200K	93.8%
201K-300K	96.6%
301K-500K	96.0%
501K-750K	96.4%
751K+	100.0%

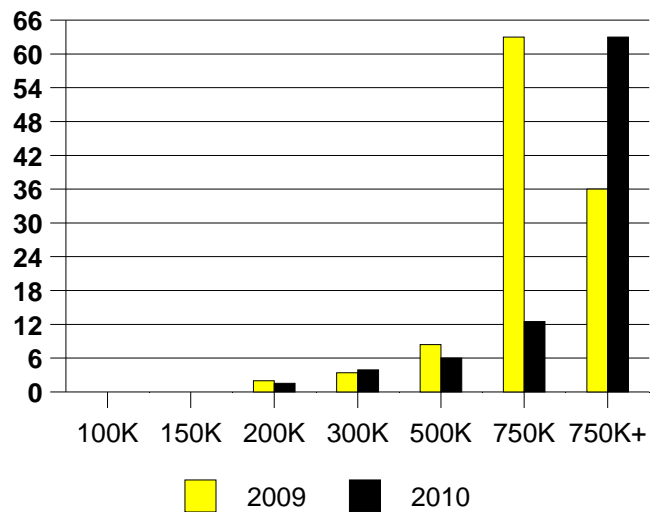
**AVERAGE OVERPRICING**  
Original List Price to Sale Price

2009	7.6%
2010	8.2%

**FAIRVIEW MONTHLY SALES**



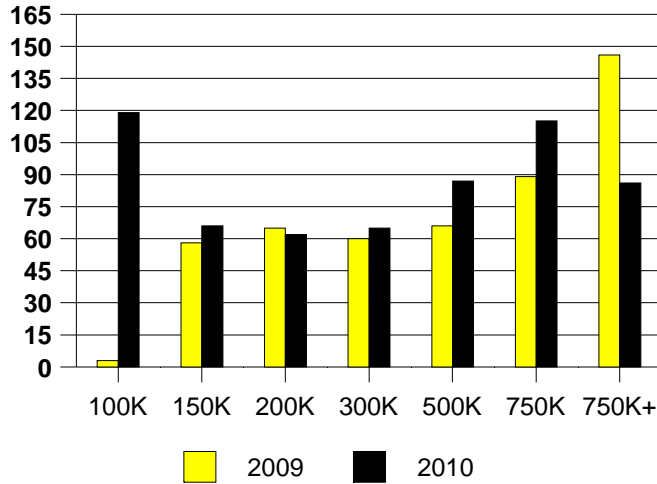
Inventory not shown where no sales  
**FAIRVIEW MONTHS OF INVENTORY**



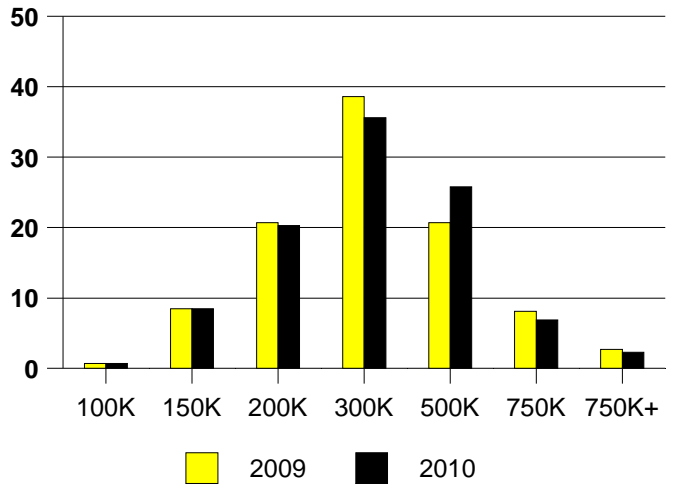
NTREIS Sold informaton as of 07/03/2010

	2009	2010
Total Sold Volume	\$ 87,760,048	\$ 90,479,024
Number of Sales	295	306
Median Sale Price	\$ 246,000	\$ 265,000

**DAYS ON THE MARKET (FLOWER MOUND)**



**FLOWER MOUND MKT SHARE BY PRICE**



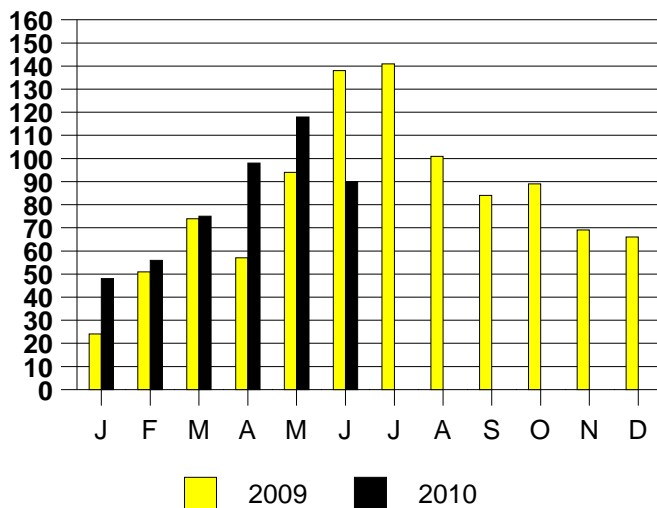
**SALE/LIST PRICE RATIO**

0K-100K	93.6%
101K-150K	97.0%
151K-200K	97.8%
201K-300K	97.8%
301K-500K	97.3%
501K-750K	97.0%
751K+	98.1%

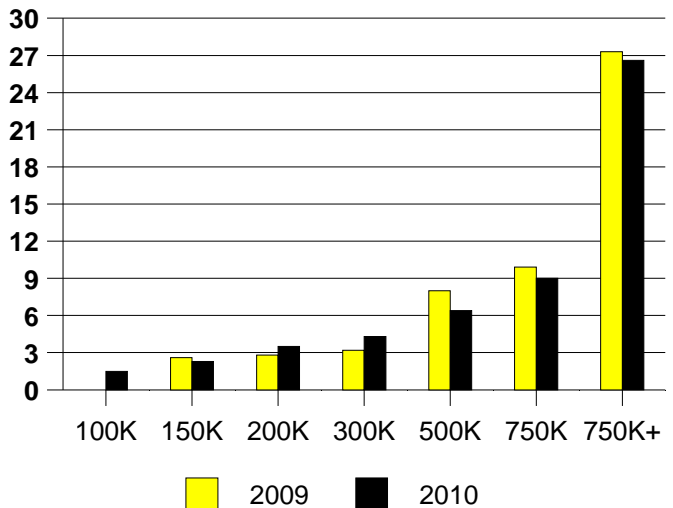
**AVERAGE OVERPRICING**  
Original List Price to Sale Price

2009	5.0%
2010	4.8%

**FLOWER MOUND MONTHLY SALES**



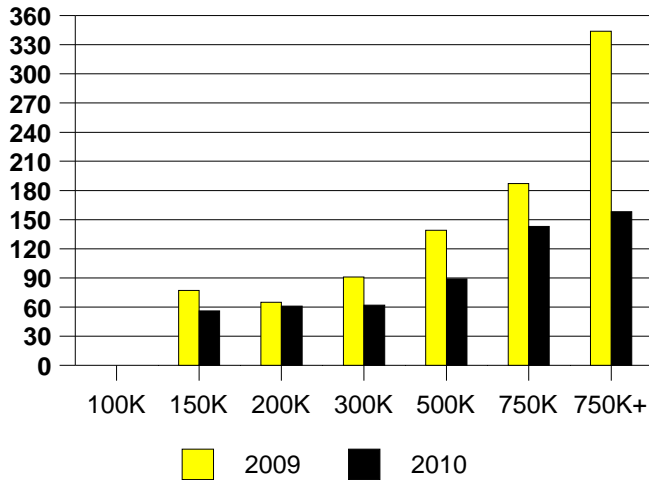
**FLOWER MOUND MONTHS OF INVENTORY**



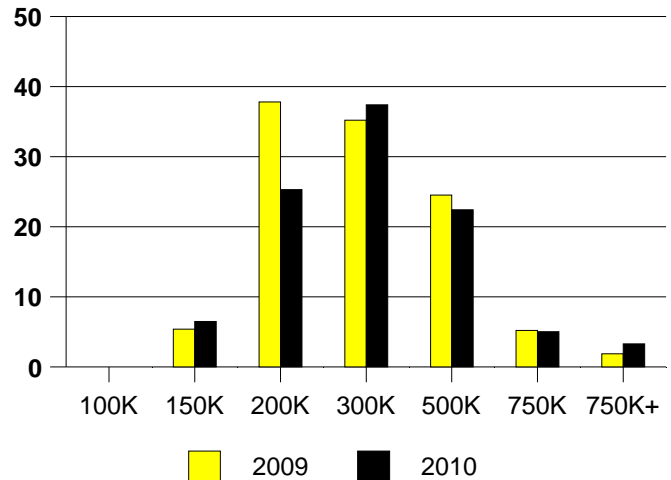
NTREIS Sold informaton as of 07/03/2010

	2009	2010
Total Sold Volume	\$ 194,422,240	\$ 228,897,664
Number of Sales	670	780
Median Sale Price	\$ 248,700	\$ 242,000

DAYS ON MARKET(FRISCO)



FRISCO MKT SHARE BY PRICE RANGE



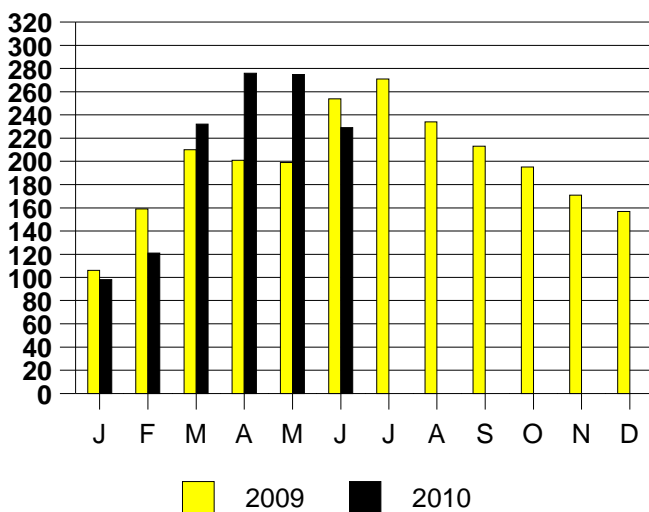
SALE/LIST PRICE RATIO

0K-100K	NONE
101K-150K	96.2%
151K-200K	97.8%
201K-300K	97.4%
301K-500K	96.8%
501K-750K	95.8%
751K+	96.2%

AVERAGE OVERPRICING  
Original List Price to Sale Price

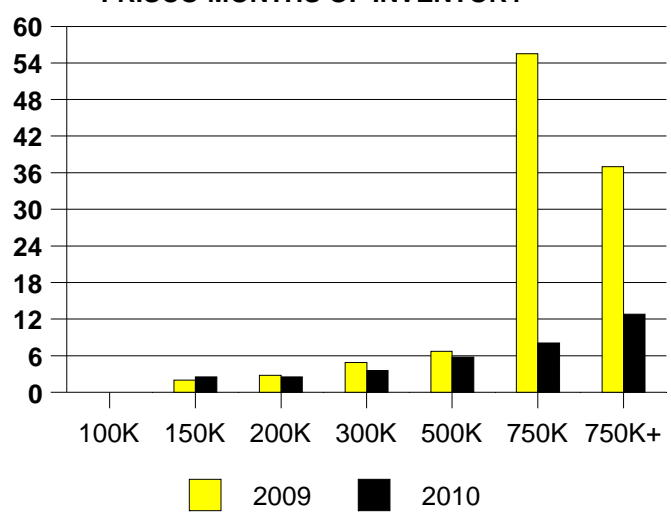
2009	7.3%
2010	5.5%

FRISCO MONTHLY SALES



Inventory not shown where no sales

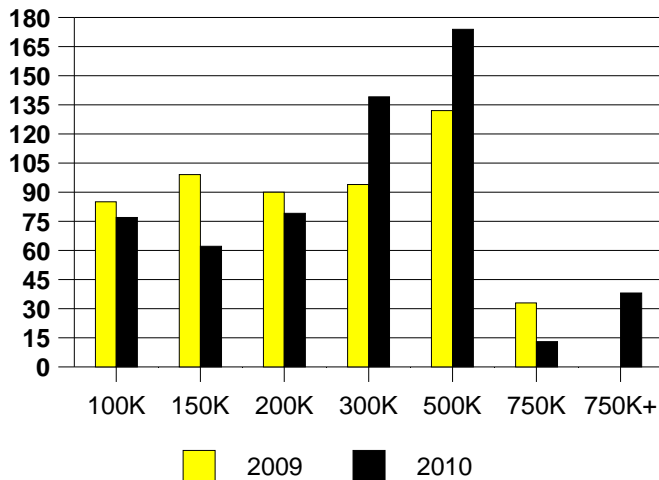
FRISCO MONTHS OF INVENTORY



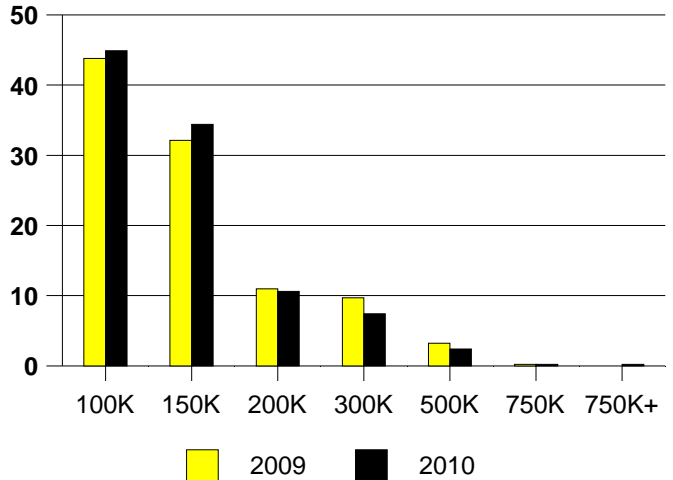
NTREIS Sold informaton as of 07/03/2010

	<u>2009</u>	<u>2010</u>
Total Sold Volume	\$ 66,210,328	\$ 72,687,736
Number of Sales	527	593
Median Sale Price	\$ 109,900	\$ 105,900

**DAYS ON THE MARKET (GARLAND)**



**GARLAND MKT SHARE BY PRICE RANGE**



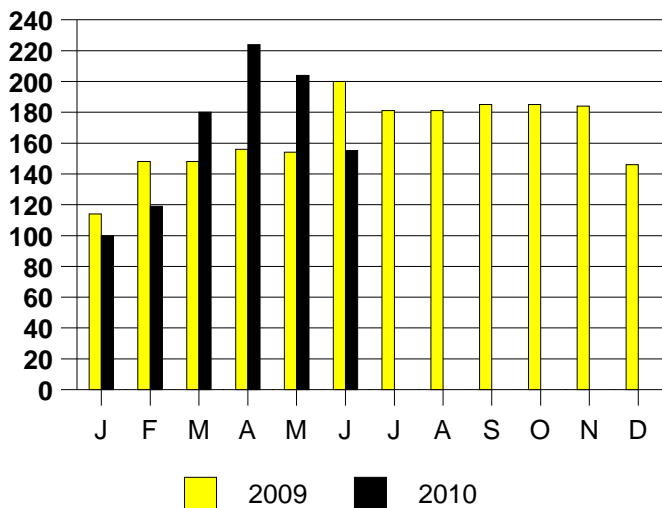
**SALE/LIST PRICE RATIO**

0K-100K	97.2%
101K-150K	98.0%
151K-200K	96.4%
201K-300K	96.0%
301K-500K	93.9%
501K-750K	99.0%
751K+	94.0%

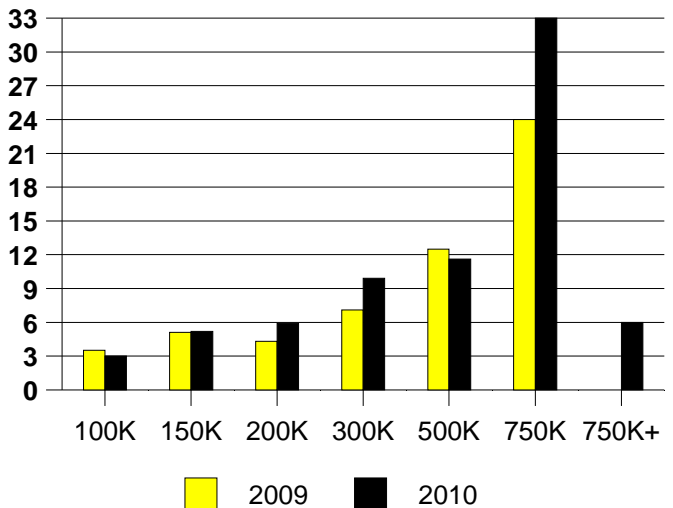
**AVERAGE OVERPRICING**  
Original List Price to Sale Price

2009	8.2%
2010	7.6%

**GARLAND MONTHLY SALES**

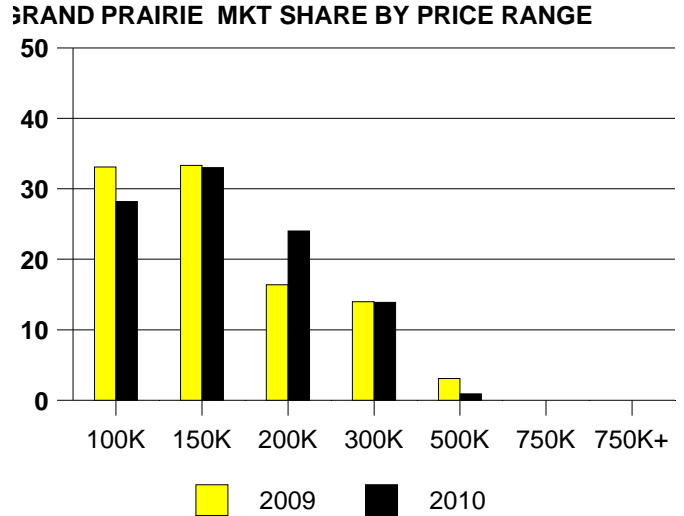
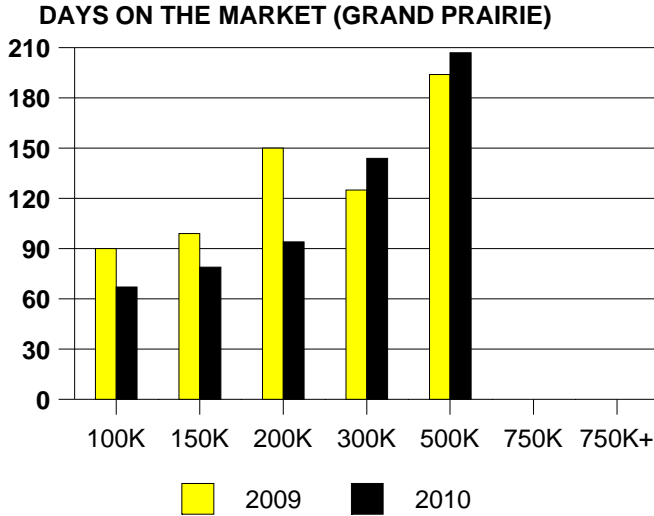


Inventory not shown where no sales  
**GARLAND MONTHS OF INVENTORY**



NTREIS Sold informaton as of 07/03/2010

	<u>2009</u>	<u>2010</u>
Total Sold Volume	\$57,893,400	\$ 63,085,016
Number of Sales	420	454
Median Sale Price	\$ 126,700	\$ 130,912

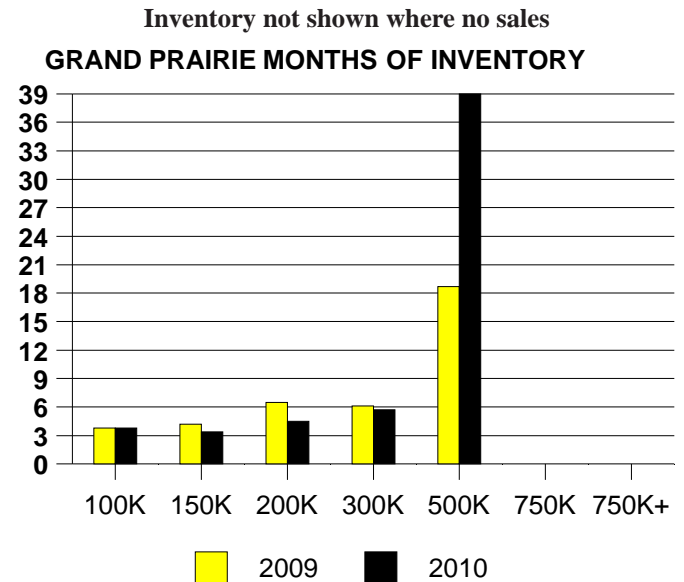
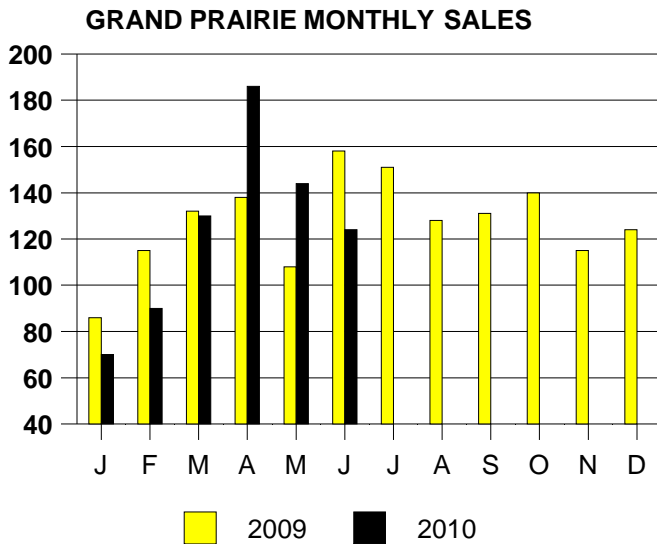


**SALE/LIST PRICE RATIO**

0K-100K	98.1%
101K-150K	98.6%
151K-200K	98.3%
201K-300K	95.0%
301K-500K	91.2%
501K-750K	NONE
751K+	NONE

**AVERAGE OVERPRICING**  
Original List Price to Sale Price

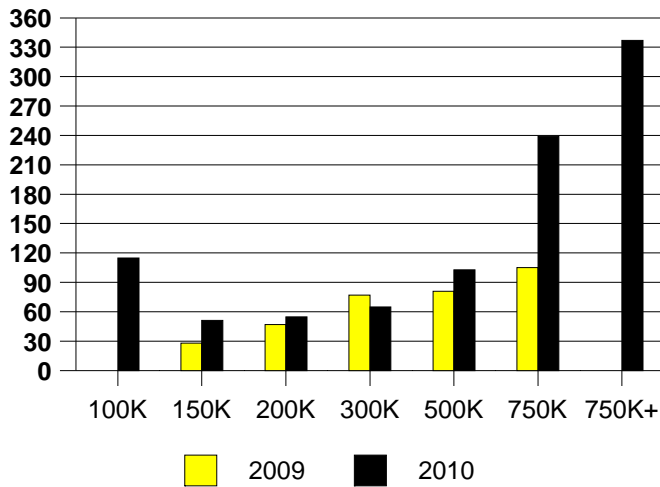
2009	10.7%
2010	6.3%



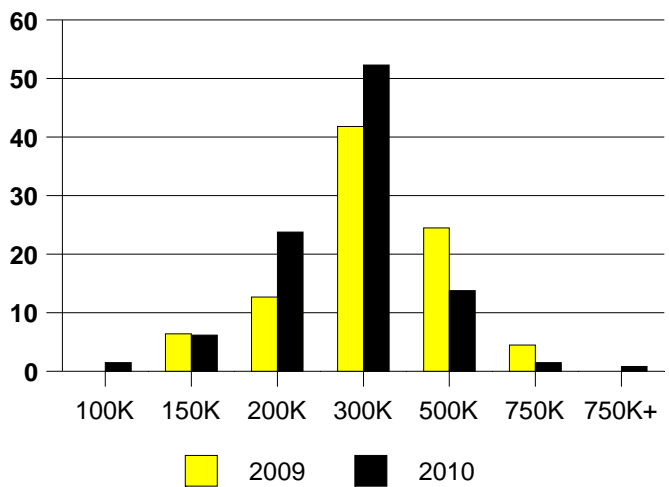
NTREIS Sold informaton as of 07/03/2010

	2009	2010
Total Sold Volume	\$ 29,196,316	\$ 32,516,456
Number of Sales	110	130
Median Sale Price	\$ 252,385	\$ 235,000

**DAYS ON THE MARKET (GRAPEVINE)**



**GRAPEVINE MKT SHARE BY PRICE RANGE**



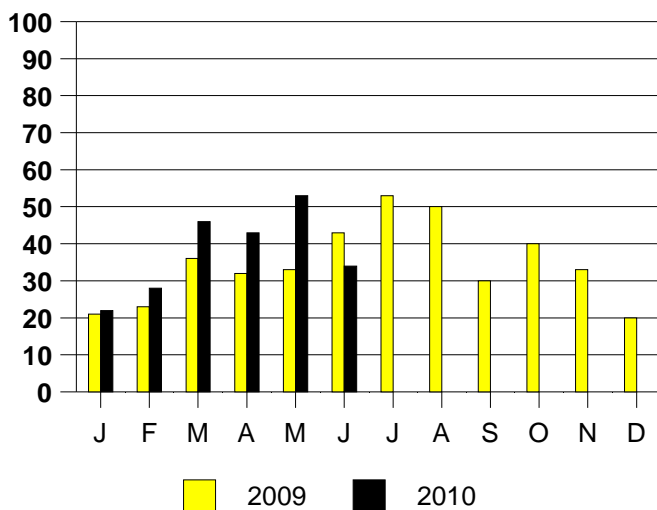
**SALE/LIST PRICE RATIO**

0K-100K	92.5%
101K-150K	96.4%
151K-200K	98.8%
201K-300K	98.1%
301K-500K	97.0%
501K-750K	93.7%
751K+	94.6%

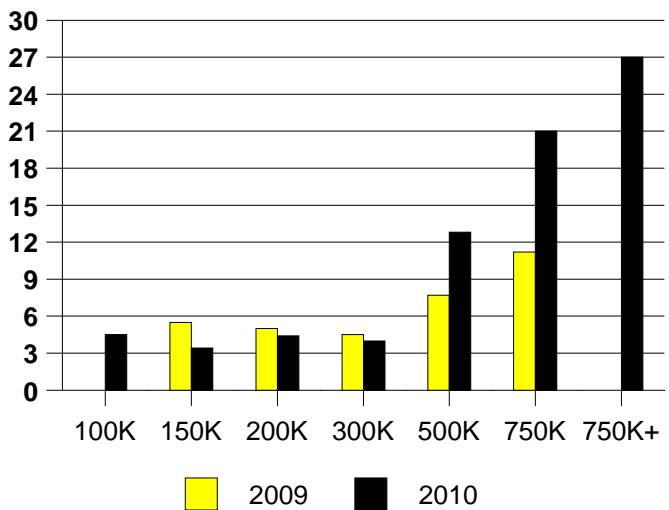
**AVERAGE OVERPRICING**  
Original List Price to Sale Price

2009	5.4%
2010	4.6%

**GRAPEVINE MONTHLY SALES**



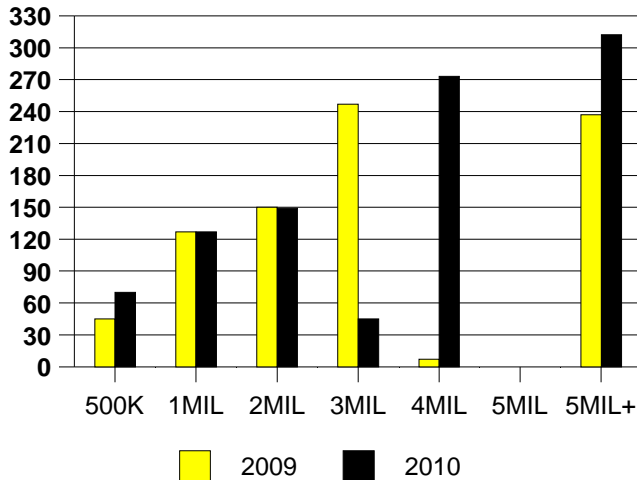
Inventory not shown where no sales  
**GRAPEVINE MONTHS OF INVENTORY**



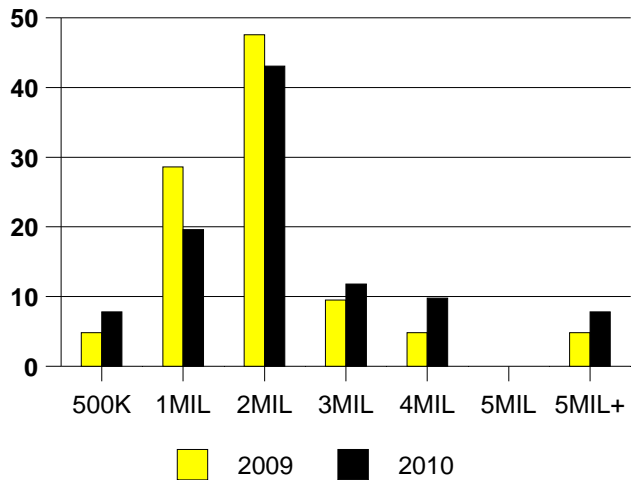
NTREIS Sold informaton as of 07/03/2010

	2009	2010
Total Sold Volume	\$ 35,423,180	\$ 103,773,760
Number of Sales	21	51
Median Sale Price	\$ 1,347,280	\$ 1,375,000

**DAYS ON THE MARKET (HP)**



**MKT SHARE BY PRICE RANGE (HP)**



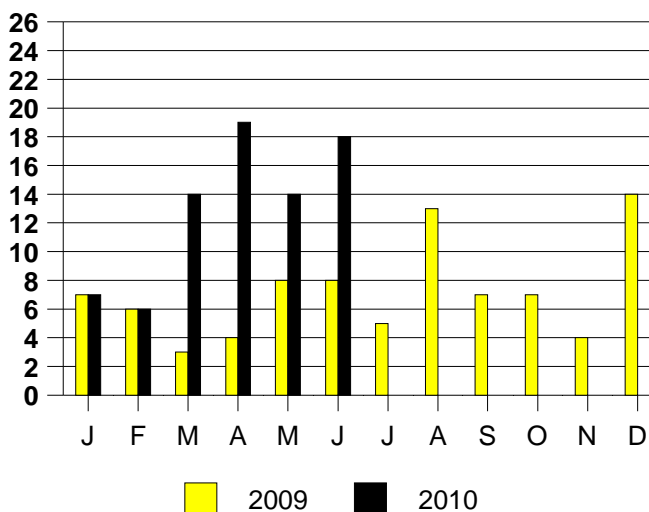
**SALE/LIST PRICE RATIO**

0K-500K	100.5%
501K-1MIL	95.3%
1MIL-2MIL	94.4%
2MIL-3MIL	96.9%
3MIL-4MIL	90.1%
4MIL-5MIL	NONE
5MIL+	98.7%

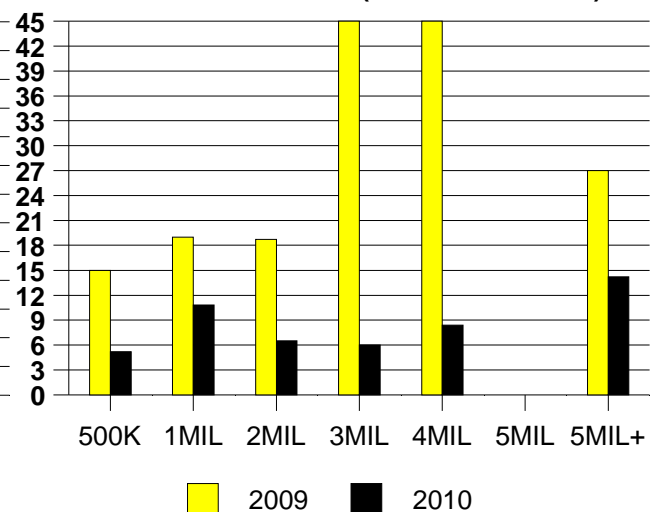
**AVERAGE OVERPRICING**

Orig List Price to Sale Price	
2009	14.2%
2010	13.0%

**HIGHLAND PARK MONTHLY SALES**



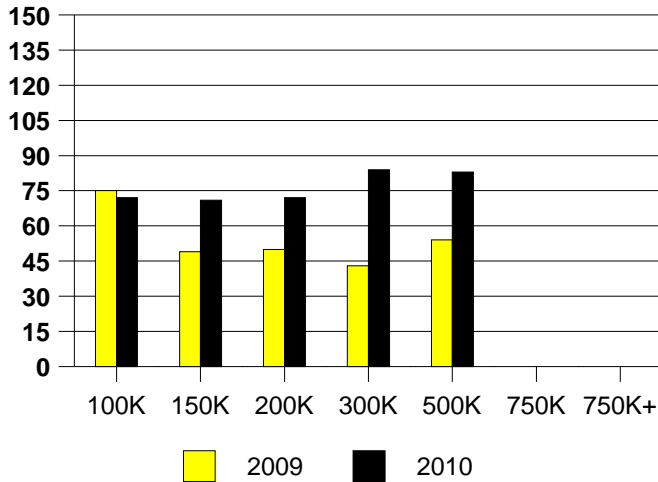
**Inventory not shown where no sales  
MONTHS OF INVENTORY (HIGHLAND PARK)**



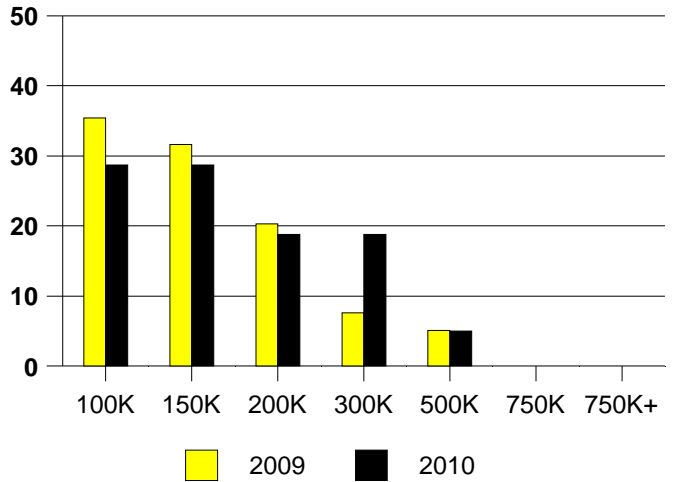
NTREIS Sold information as of 07/03/2010

	2009	2010
Total Sold Volume	\$ 10,837,883	\$ 15,333,661
Number of Sales	79	101
Median Sale Price	\$ 127,250	\$ 135,000

DAYS ON THE MARKET (HURST)



HURST MKT SHARE BY PRICE RANGE



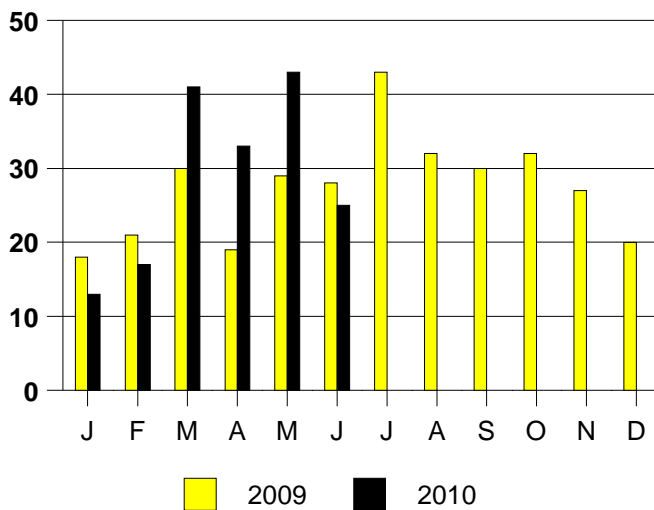
SALE/LIST PRICE RATIO

0K-100K	95.9%
101K-150K	98.2%
151K-200K	96.8%
201K-300K	97.4%
301K-500K	96.2%
501K-750K	NONE
751K+	NONE

AVERAGE OVERPRICING  
Original List Price to Sale Price

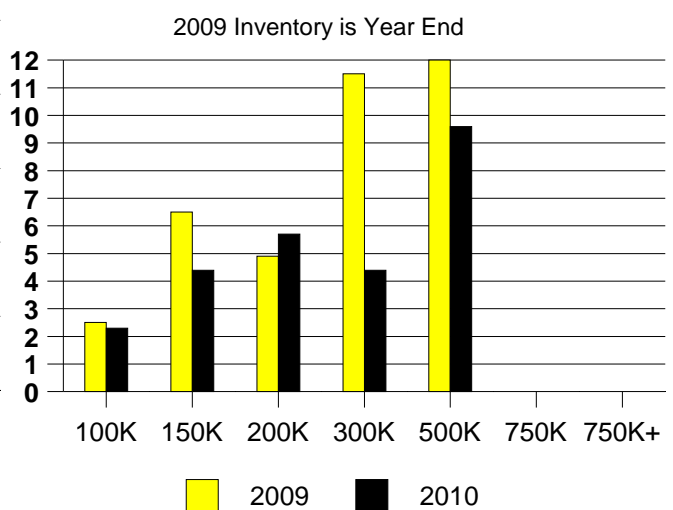
2009	6.7%
2010	6.2%

HURST MONTHLY SALES



Inventory not shown where no sales

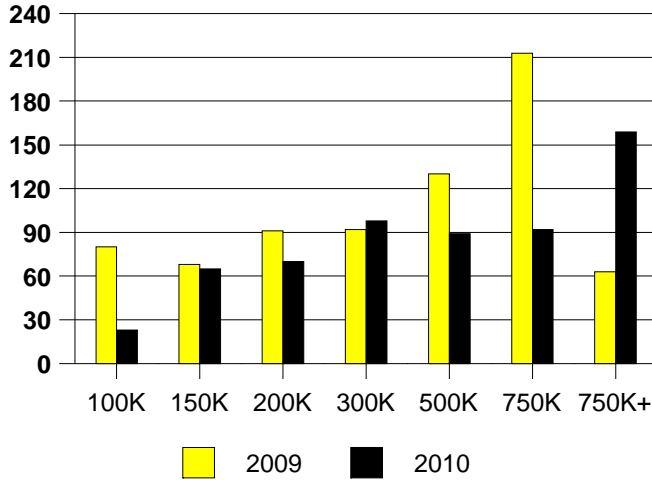
HURST MONTHS OF INVENTORY



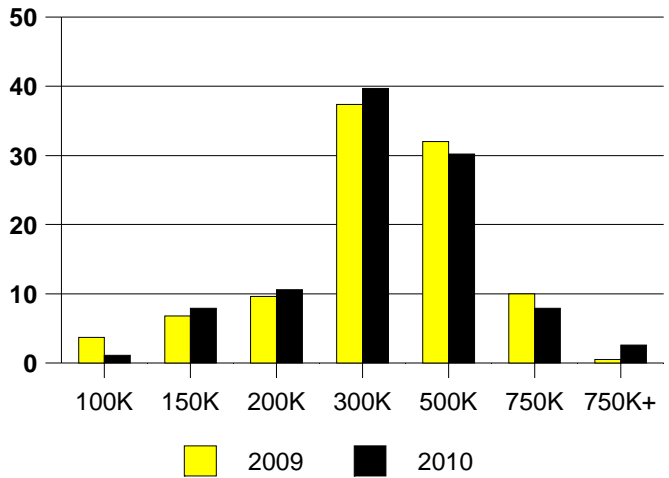
NTREIS Sold informaton as of 07/03/2010

	<u>2009</u>	<u>2010</u>
Total Sold Volume	\$ 67,058,352	\$ 60,288,892
Number of Sales	219	189
Median Sale Price	\$ 285,000	\$ 280,660

**DAYS ON THE MARKET (KELLER)**



**KELLER MKT SHARE BY PRICE RANGE**



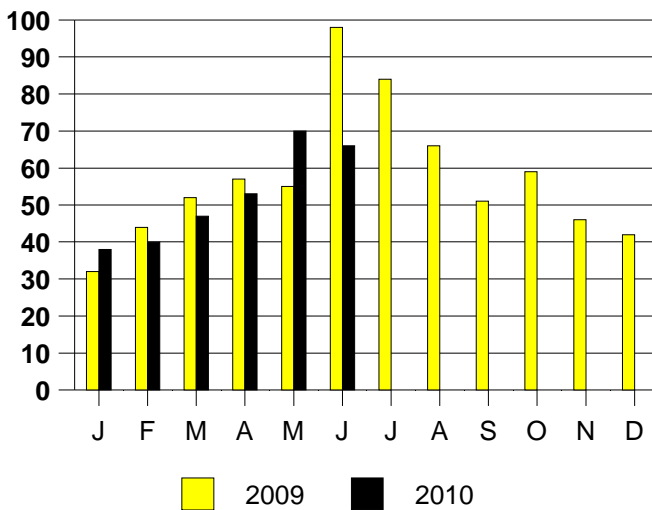
**SALE/LIST PRICE RATIO**

0K-100K	97.6%
101K-150K	98.6%
151K-200K	98.4%
201K-300K	97.2%
301K-500K	97.5%
501K-750K	97.2%
751K+	97.8%

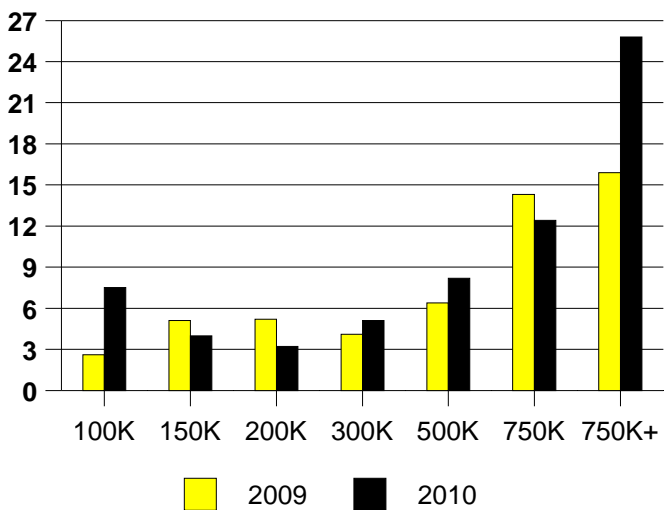
**AVERAGE OVERPRICING**  
Original List Price to Sale Price

2009	6.8%
2010	6.0%

**KELLER MONTHLY SALES**



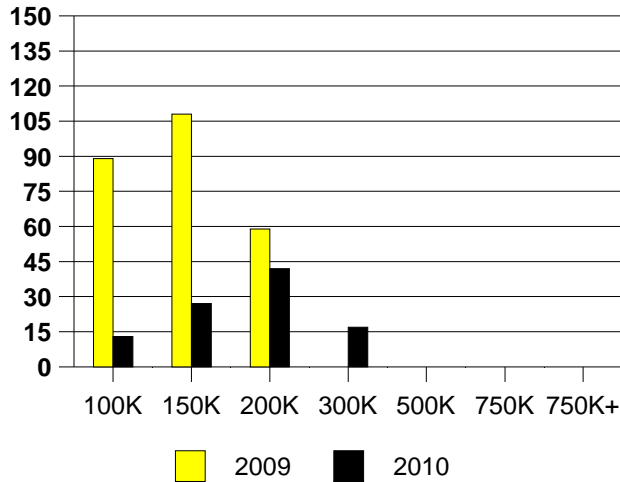
Inventory not shown where no sales  
**KELLER MONTHS OF INVENTORY**



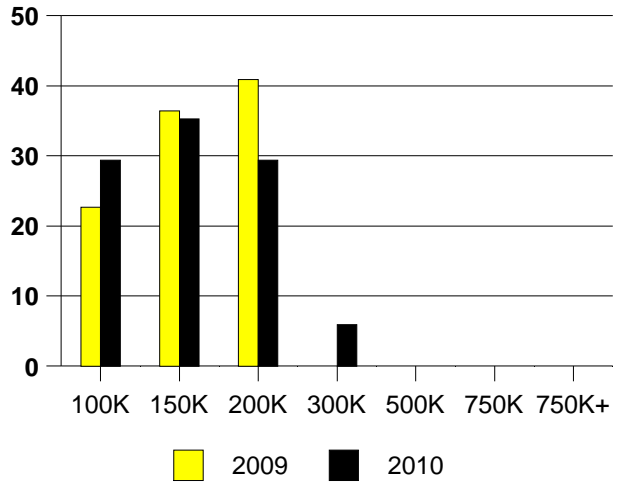
NTREIS Sold informaton as of 07/03/2010

	<u>2009</u>	<u>2010</u>
Total Sold Volume	\$ 3,000,600	\$ 2,248,280
Number of Sales	22	17
Median Sale Price	\$ 142,000	\$ 136,000

**LAKE DALLAS DAYS ON THE MARKET**



**LAKE DALLAS MKT SHARE BY PRICE RANGE**



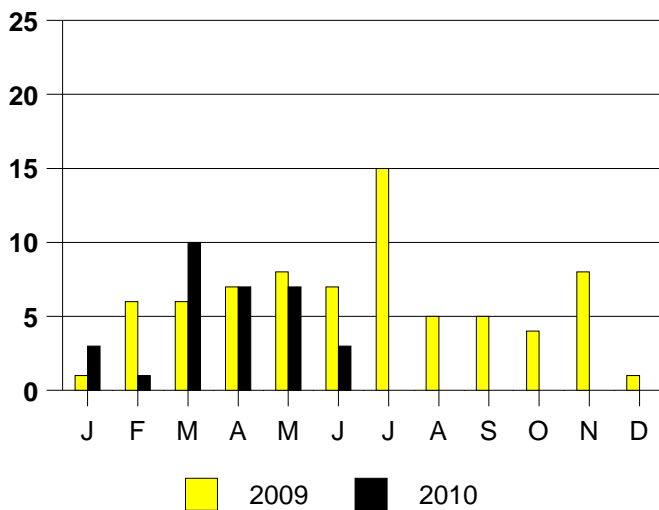
**SALE/LIST PRICE RATIO**

0K-100K	95.0%
101K-150K	99.2%
151K-200K	99.6%
201K-300K	99.6%
301K-500K	NONE
501K-750K	NONE
751K+	NONE

**AVERAGE OVERPRICING**  
Original List Price to Sale Price

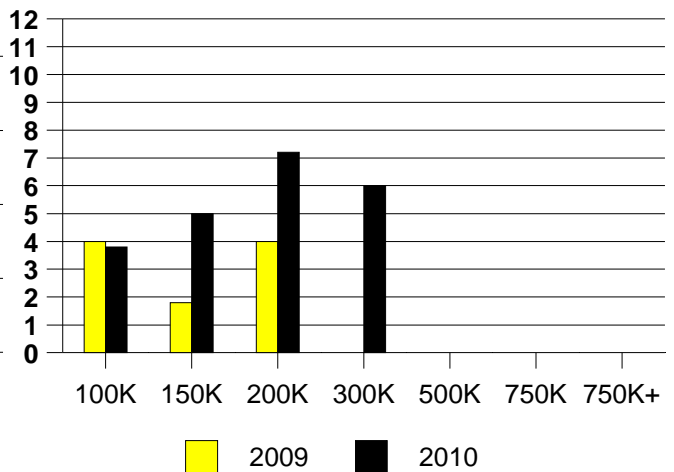
2009	7.2%
2010	2.9%

**LAKE DALLAS MONTHLY SALES**



**LAKE DALLAS MONTHS OF INVENTORY**

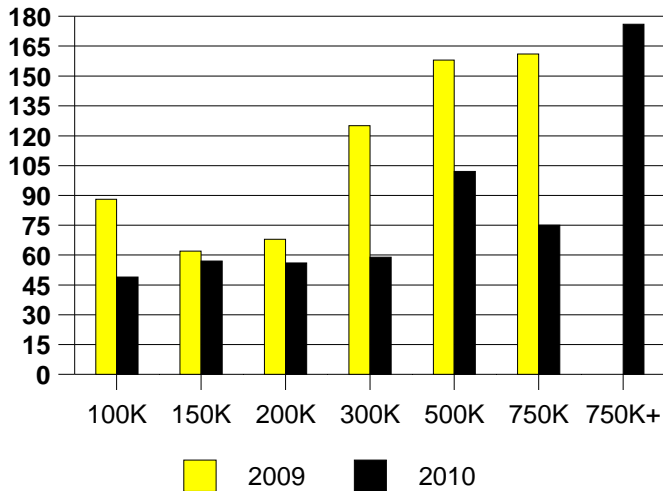
2009 Inventory is Year End



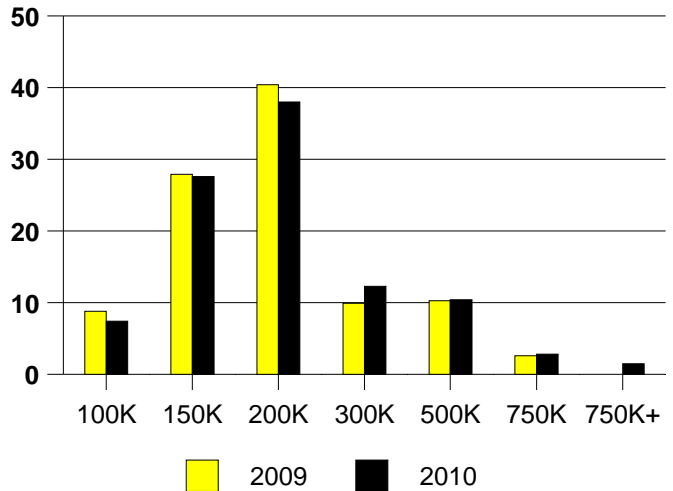
NTREIS Sold informaton as of 07/03/2010

	2009	2010
Total Sold Volume	\$ 52,508,124	\$ 69,266,016
Number of Sales	272	326
Median Sale Price	\$ 164,500	\$ 169,450

**DAYS ON THE MARKET (LEWISVILLE)**



**LEWISVILLE MKT SHARE BY PRICE RANGE**



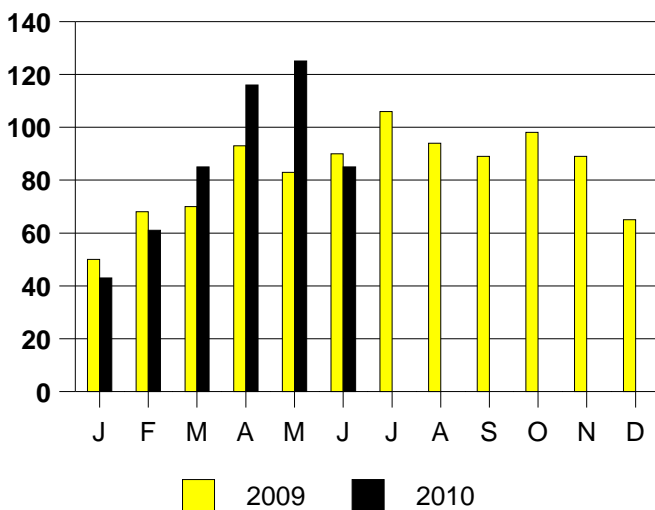
**SALE/LIST PRICE RATIO**

0K-100K	97.9%
101K-150K	98.6%
151K-200K	98.4%
201K-300K	97.2%
301K-500K	97.5%
501K-750K	97.2%
751K+	97.8%

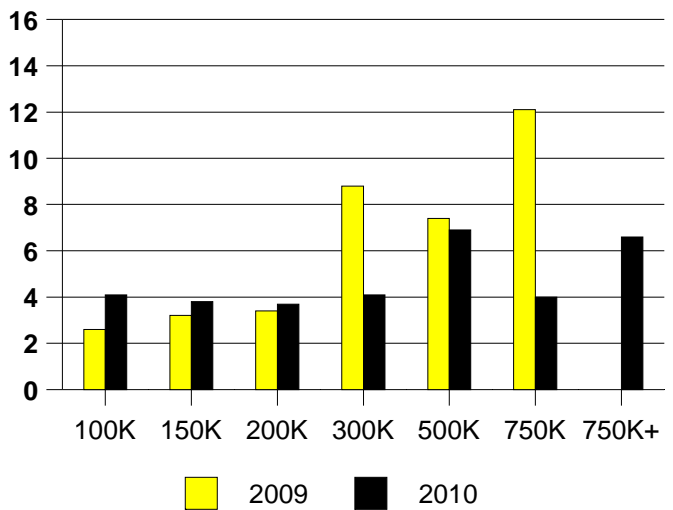
**AVERAGE OVERPRICING**  
Original List Price to Sale Price

2009	5.8%
2010	4.9%

**LEWISVILLE MONTHLY SALES**



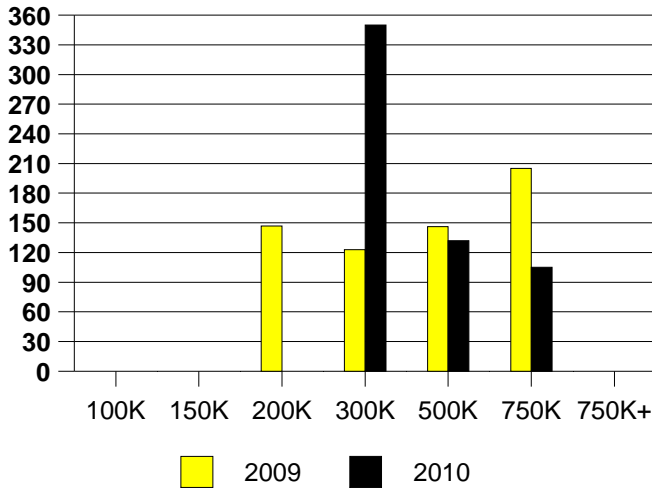
Inventory not shown where no sales  
**LEWISVILLE MONTHS OF INVENTORY**



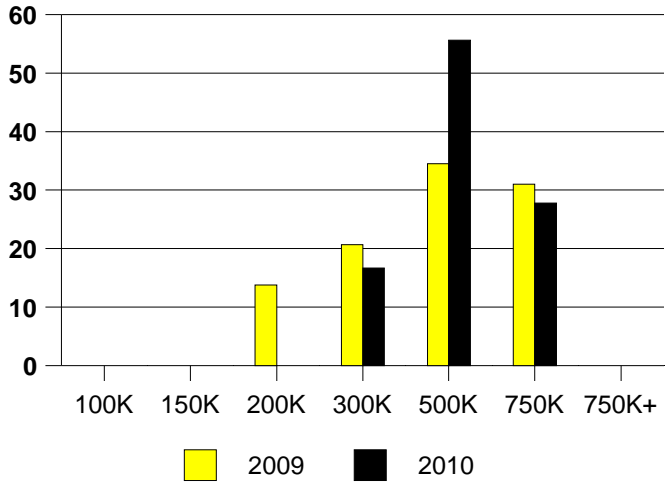
NTREIS Sold informaton as of 07/03/2010

	2009	2010
Total Sold Volume	\$ 11,695,619	\$ 7,752,434
Number of Sales	29	18
Median Sale Price	\$ 400,000	\$ 418,000

DAYS ON THE MARKET (LUCAS)



LUCAS MKT SHARE BY PRICE RANGE



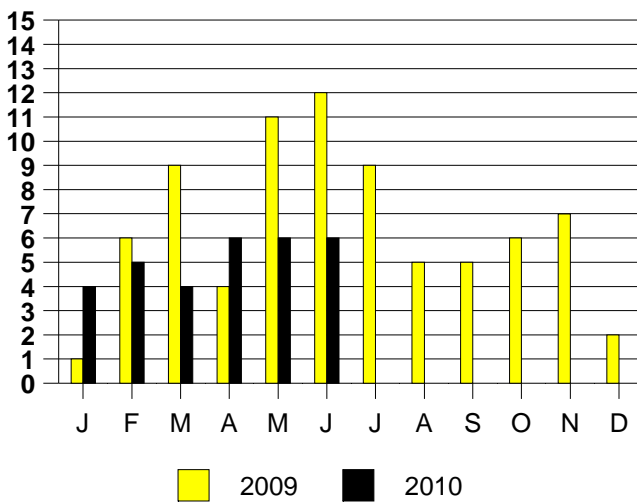
SALE/LIST PRICE RATIO

0K-100K	NONE
101K-150K	NONE
151K-200K	NONE
201K-300K	95.4%
301K-500K	93.2%
501K-750K	101.1%
751K+	NONE

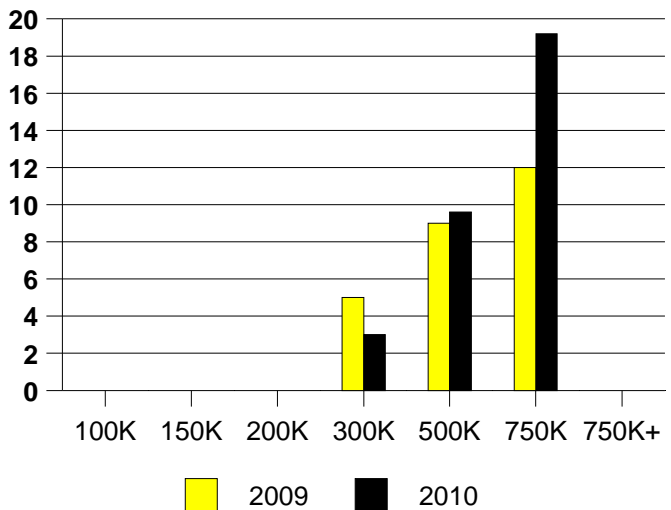
AVERAGE OVERPRICING  
Original List Price to Sale Price

2009	10.2%
2010	10.2%

LUCAS MONTHLY SALES

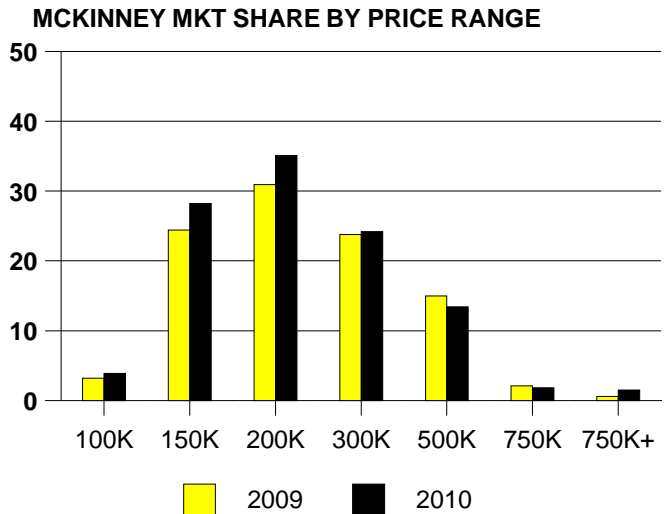
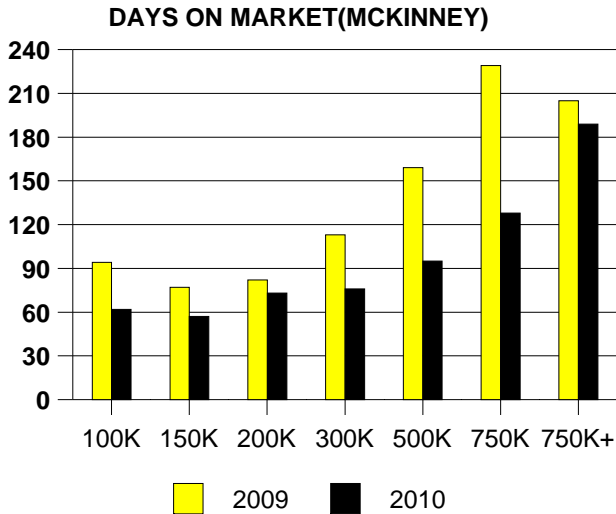


Inventory not shown where no sales  
LUCAS MONTHS OF INVENTORY



NTREIS Sold informaton as of 07/03/2010

	<u>2009</u>	<u>2010</u>
Total Sold Volume	\$ 136,485,920	\$ 138,172,224
Number of Sales	622	619
Median Sale Price	\$ 184,635	\$ 181,490



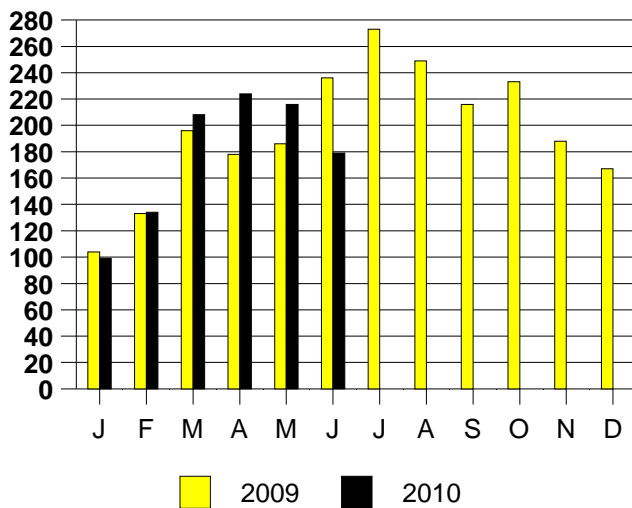
**SALE/LIST PRICE RATIO**

0K-100K	94.3%
101K-150K	97.3%
151K-200K	97.9%
201K-300K	97.2%
301K-500K	96.2%
501K-750K	95.7%
751K+	90.4%

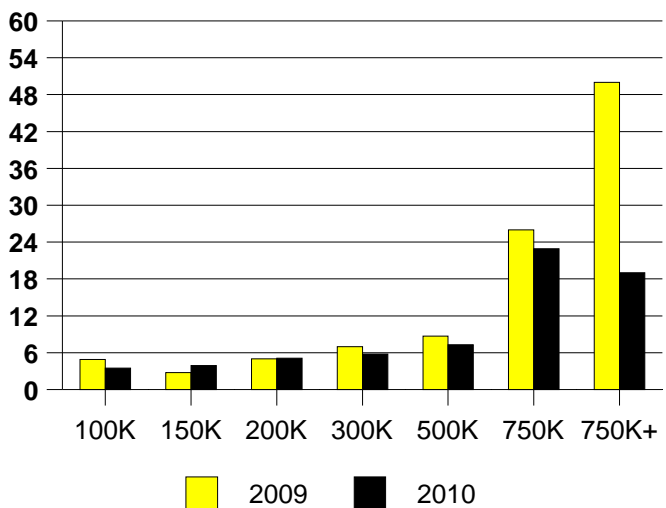
**AVERAGE OVERPRICING**  
Original List Price to Sale Price

2009	7.2%
2010	6.0%

**MCKINNEY MONTHLY SALES**



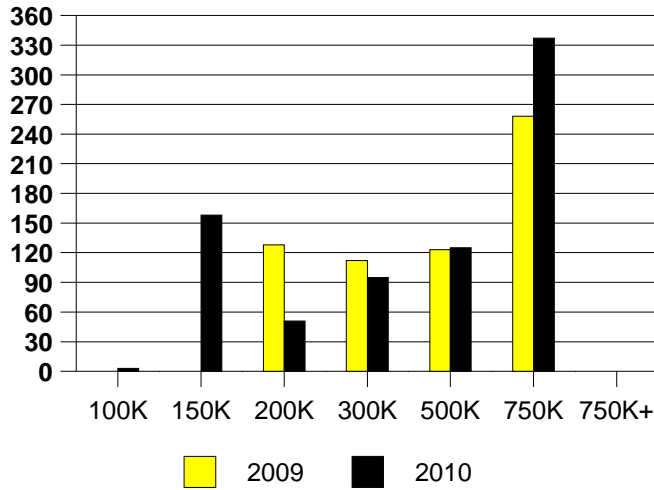
Inventory not shown where no sales  
**MCKINNEY MONTHS OF INVENTORY**



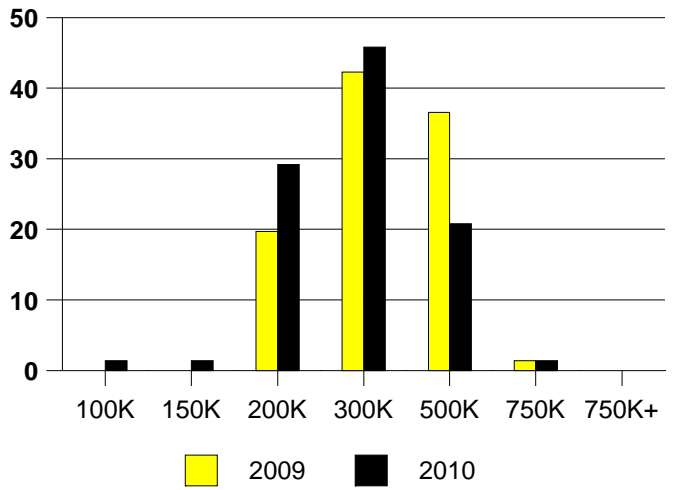
NTREIS Sold informaton as of 07/03/2010

	2009	2010
Total Sold Volume	\$19,971,520	\$ 18,149,336
Number of Sales	71	72
Median Sale Price	\$ 278,000	\$ 248,000

DAYS ON THE MARKET (MURPHY)



MURPHY MKT SHARE BY PRICE RANGE



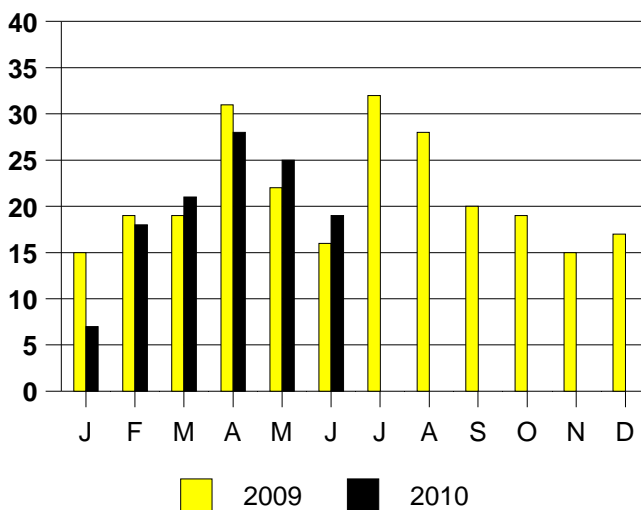
SALE/LIST PRICE RATIO

0K-100K	93.3%
101K-150K	103.0%
151K-200K	97.7%
201K-300K	96.6%
301K-500K	96.2%
501K-750K	87.8%
751K+	NONE

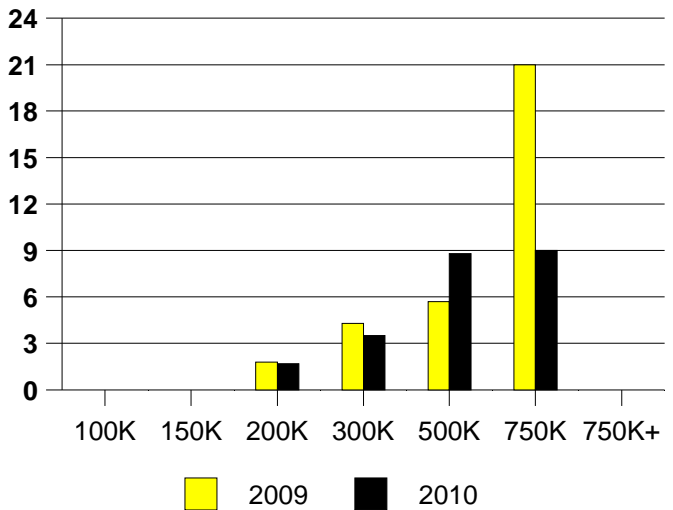
AVERAGE OVERPRICING  
Original List Price to Sale Price

2009	10.2%
2010	5.4%

MURPHY MONTHLY SALES



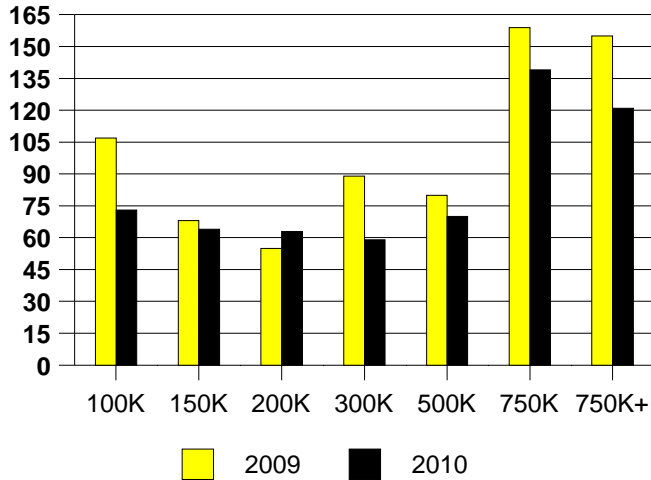
Inventory not shown where no sales  
MURPHY MONTHS OF INVENTORY



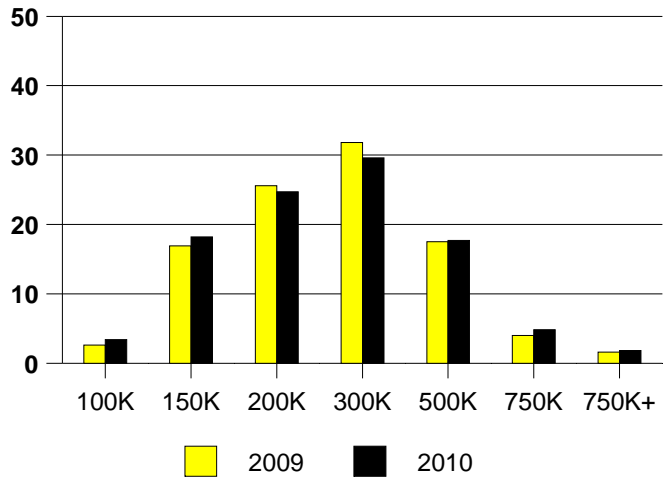
NTREIS Sold informaton as of 07/03/2010

	<u>2009</u>	<u>2010</u>
Total Sold Volume	\$ 202,266,368	\$ 202,020,896
Number of Sales	800	798
Median Sale Price	\$ 212,000	\$ 208,750

**DAYS ON MARKET(PLANO)**



**PLANO MKT SHARE BY PRICE RANGE**



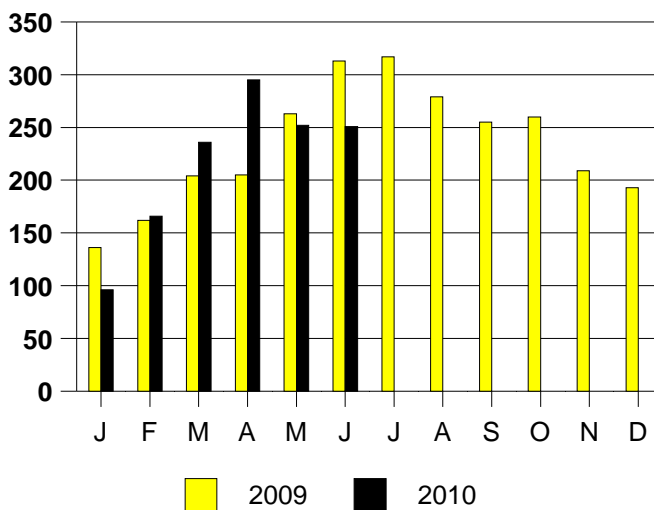
**SALE/LIST PRICE RATIO**

0K-100K	98.4%
101K-150K	97.9%
151K-200K	97.5%
201K-300K	97.0%
301K-500K	96.9%
501K-750K	96.7%
751K+	97.1%

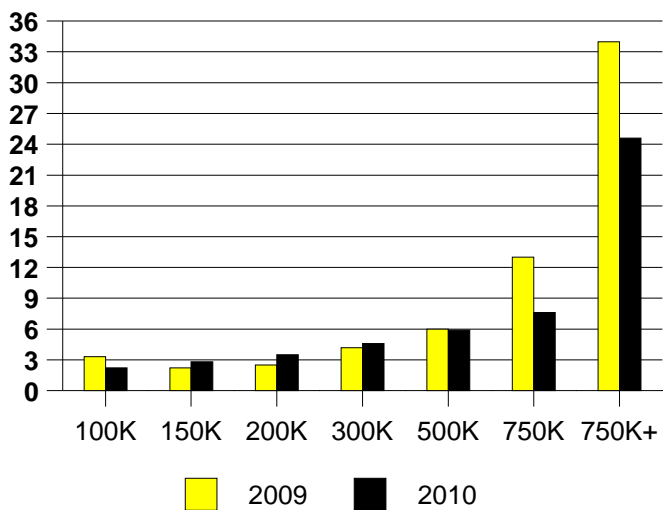
**AVERAGE OVERPRICING**  
Original List Price to Sale Price

2009	6.1%
2010	5.3%

**PLANO MONTHLY SALES**



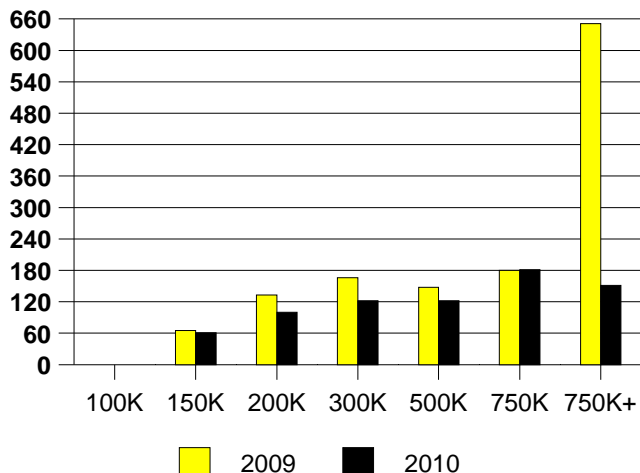
Inventory not shown where no sales  
**PLANO MONTHS OF INVENTORY**



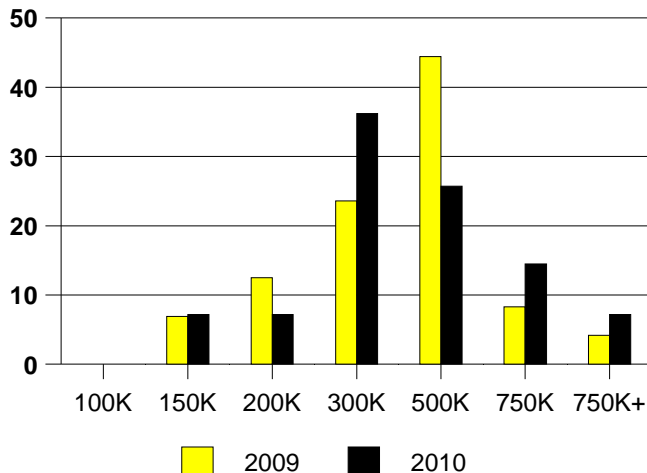
NTREIS Sold informaton as of 07/03/2010

	2009	2010
Total Sold Volume	\$ 25,560,390	\$ 24,964,000
Number of Sales	72	69
Median Sale Price	\$ 318,425	\$ 300,000

PROSPER DAYS ON THE MARKET



PROSPER MARKET SHARE BY PRICE RANGE



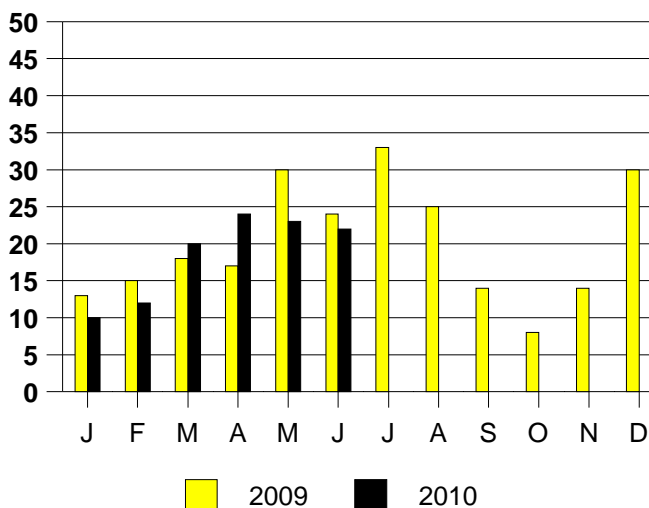
SALE/LIST PRICE RATIO

0K-100K	NONE
101K-150K	97.6%
151K-200K	96.6%
201K-300K	96.4%
301K-500K	96.7%
501K-750K	96.2%
751K+	99.0%

AVERAGE OVERPRICING  
Original List Price to Sale Price

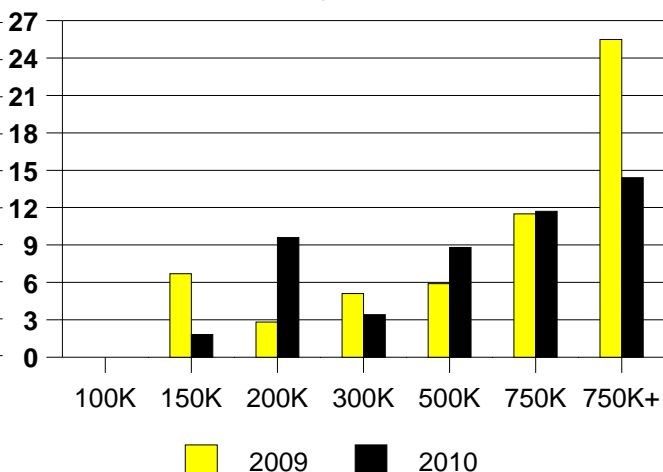
2009	12.3%
2010	6.2%

PROSPER MONTHLY SALES



Inventory not shown where no sales  
PROSPER MONTHS OF INVENTORY

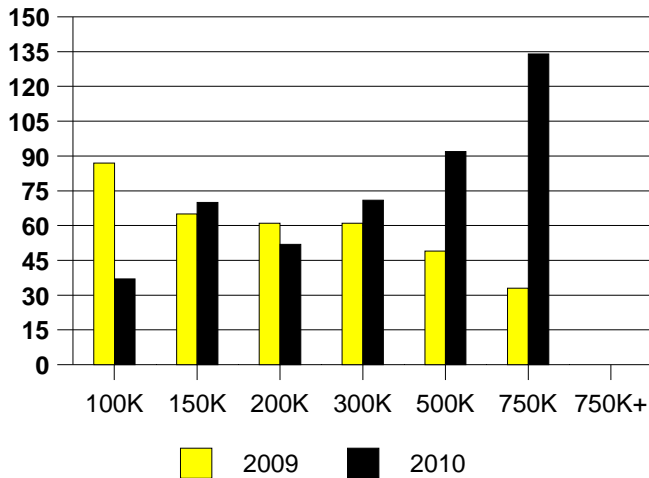
2009 Inventory is Year End



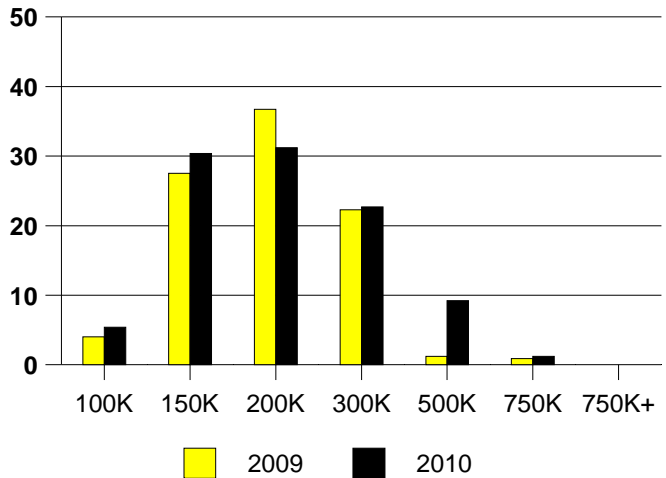
NTREIS Sold informaton as of 07/03/2010

	<u>2009</u>	<u>2010</u>
Total Sold Volume	\$ 48,225,852	\$ 50,306,640
Number of Sales	251	260
Median Sale Price	\$ 169,900	\$ 173,500

**DAYS ON MARKET(RICHARDSON)**



**RICHARDSON MKT SHARE BY PRICE RANGE**



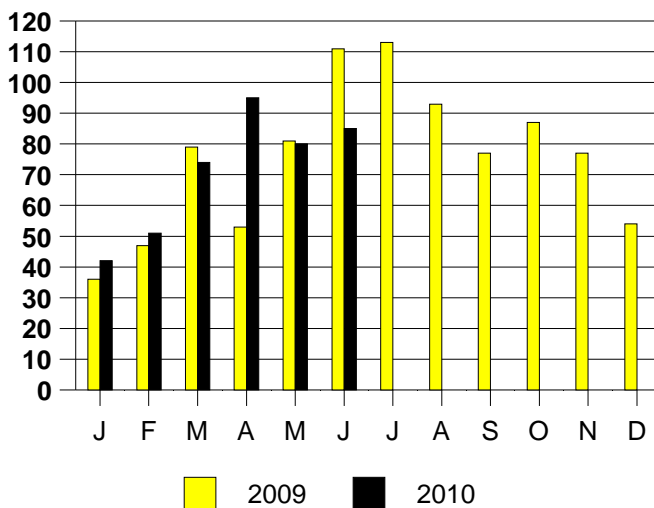
**SALE/LIST PRICE RATIO**

0K-100K	97.3%
101K-150K	97.9%
151K-200K	97.9%
201K-300K	97.4%
301K-500K	97.2%
501K-750K	93.1%
751K+	NONE

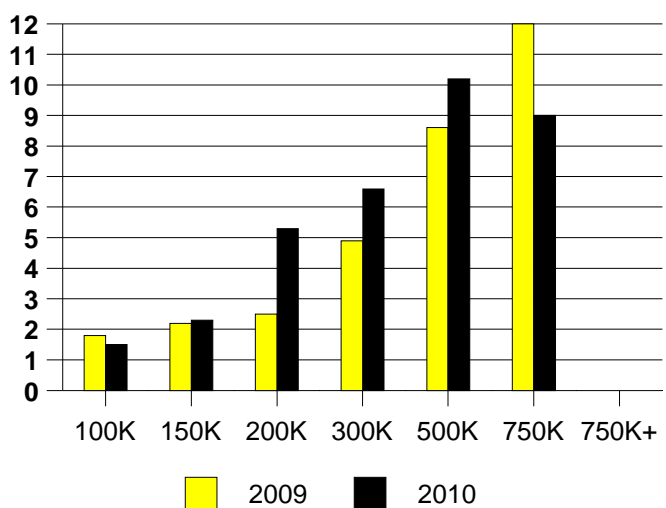
**AVERAGE OVERPRICING**  
Original List Price to Sale Price

2009	5.9%
2010	5.3%

**RICHARDSON MONTHLY SALES**



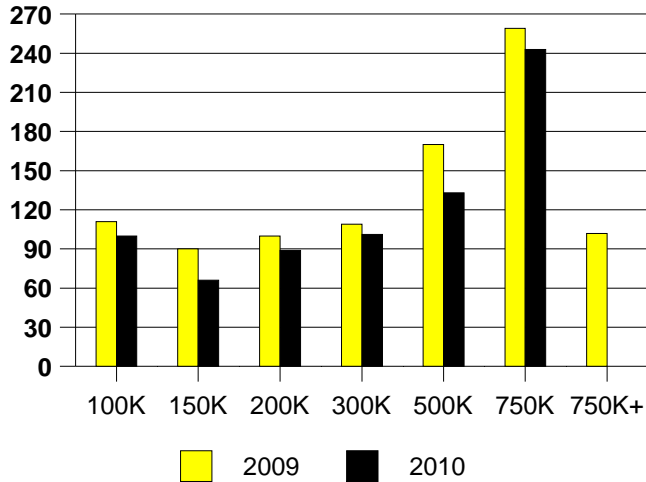
**RICHARDSON MONTHS OF INVENTORY**



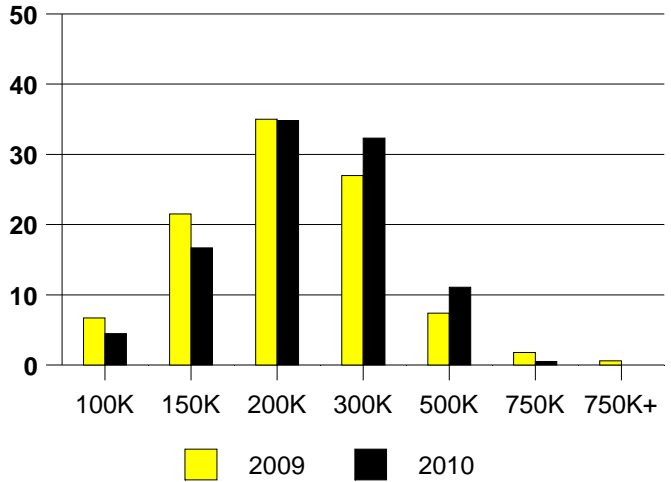
NTREIS Sold informaton as of 07/03/2010

	<u>2009</u>	<u>2010</u>
Total Sold Volume	\$ 32,615,740	\$ 41,460,348
Number of Sales	163	198
Median Sale Price	\$ 177,500	\$ 189,000

**DAYS ON THE MARKET (ROCKWALL)**



**ROCKWALL MKT SHARE BY PRICE RANGE**



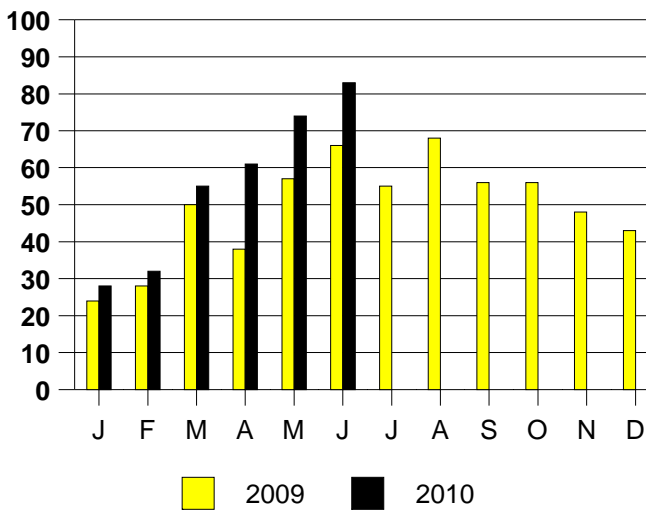
**SALE/LIST PRICE RATIO**

0K-100K	95.3%
101K-150K	96.9%
151K-200K	97.3%
201K-300K	96.3%
301K-500K	97.4%
501K-750K	100.0%
751K+	NONE

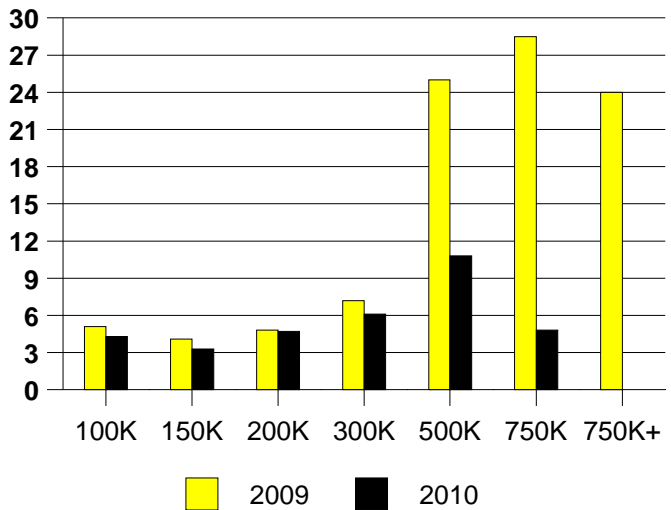
**AVERAGE OVERPRICING**  
Original List Price to Sale Price

2009	7.5%
2010	7.2%

**ROCKWALL MONTHLY SALES**



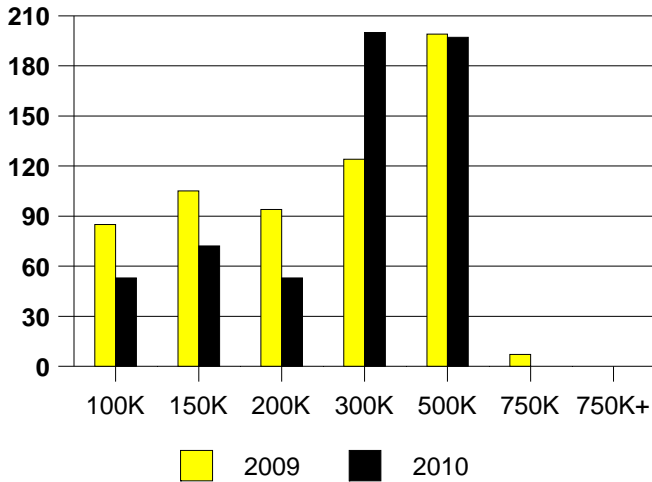
Inventory not shown where no sales  
**ROCKWALL MONTHS OF INVENTORY**



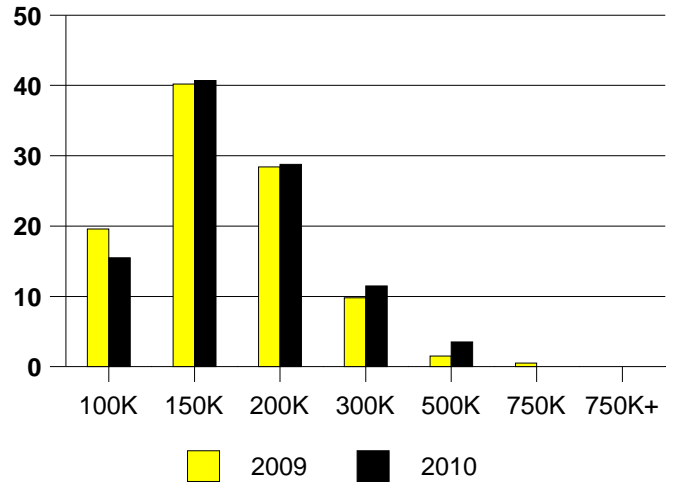
NTREIS Sold informaton as of 07/03/2010

	<u>2009</u>	<u>2010</u>
Total Sold Volume	\$ 29,922,926	\$ 35,002,124
Number of Sales	204	226
Median Sale Price	\$ 139,500	\$ 139,950

**DAYS ON THE MARKET (ROWLETT)**



**ROWLETT MKT SHARE BY PRICE RANGE**



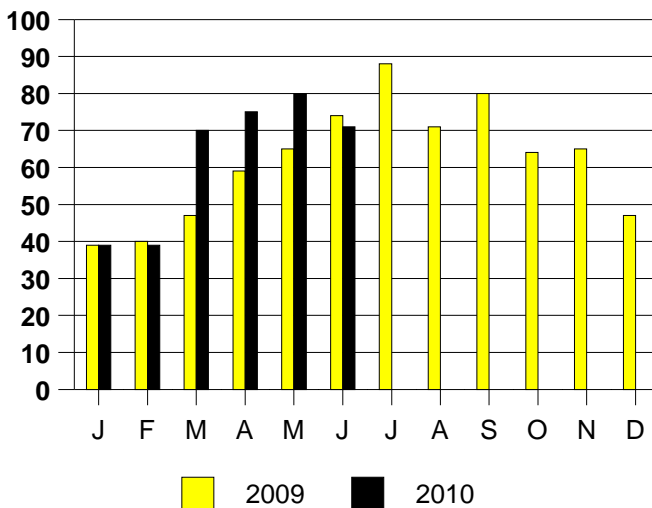
**SALE/LIST PRICE RATIO**

0K-100K	98.5%
101K-150K	98.4%
151K-200K	98.2%
201K-300K	95.4%
301K-500K	95.2%
501K-750K	NONE
751K+	NONE

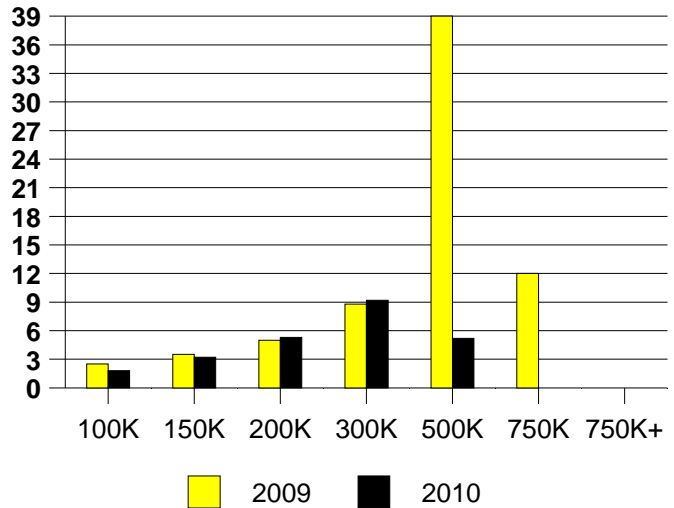
**AVERAGE OVERPRICING**  
Original List Price to Sale Price

2009	8.0%
2010	6.0%

**ROWLETT MONTHLY SALES**



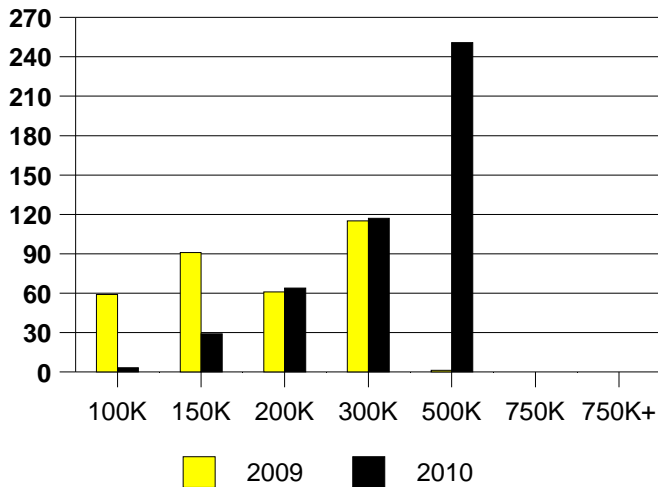
Inventory not shown where no sales  
**ROWLETT MONTHS OF INVENTORY**



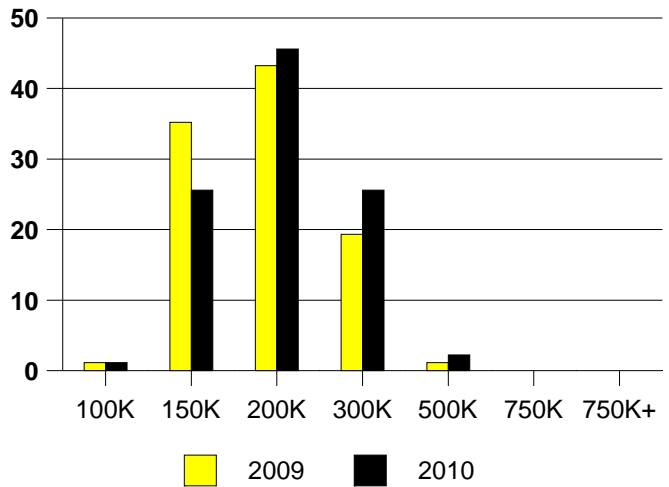
NTREIS Sold informaton as of 07/03/2010

	2009	2010
Total Sold Volume	\$ 15,153,401	\$ 16,499,488
Number of Sales	88	90
Median Sale Price	\$ 163,500	\$ 168,450

DAYS ON THE MARKET (SACHSE)



SACHSE MKT SHARE BY PRICE RANGE



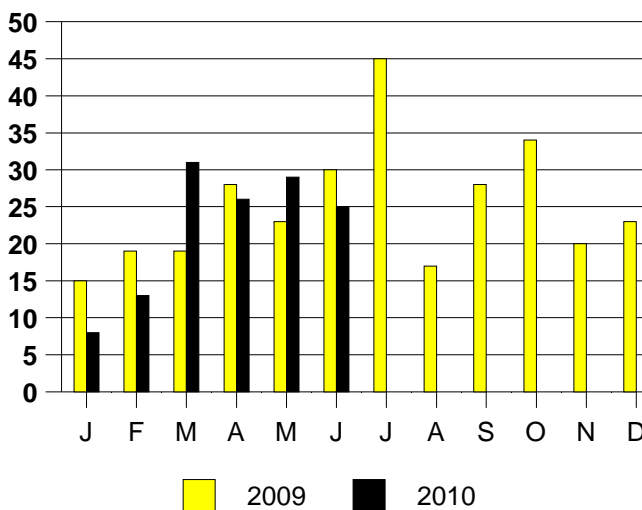
SALE/LIST PRICE RATIO

0K-100K	107.3%
101K-150K	99.3%
151K-200K	98.1%
201K-300K	92.6%
301K-500K	96.5%
501K-750K	NONE
751K+	NONE

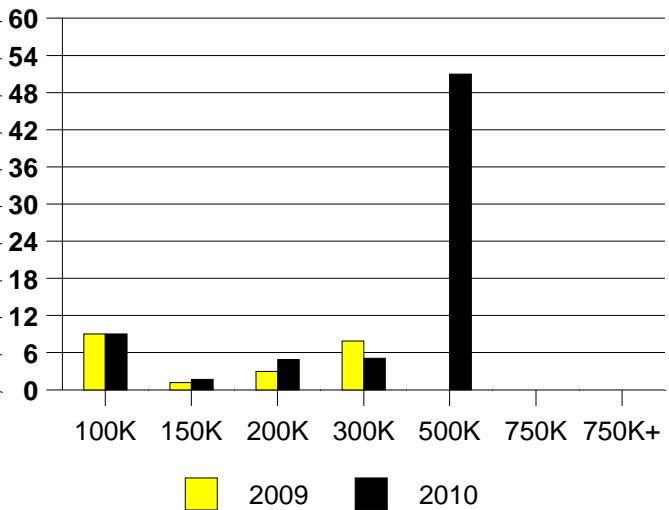
AVERAGE OVERPRICING  
Original List Price to Sale Price

2009	4.9%
2010	5.2%

SACHSE MONTHLY SALES



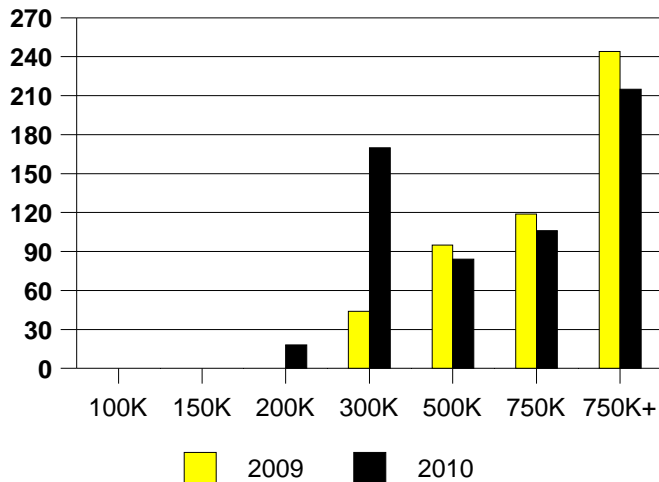
Inventory not shown where no sales  
SACHSE MONTHS OF INVENTORY



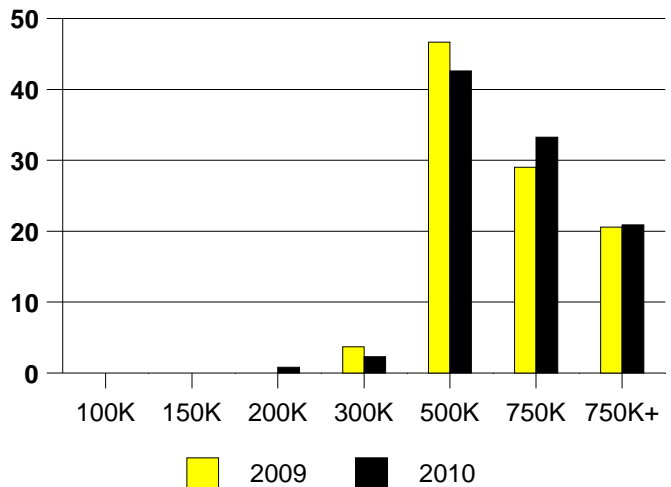
NTREIS Sold informaton as of 07/03/2010

	2009	2010
Total Sold Volume	\$ 64,438,800	\$ 79,514,192
Number of Sales	107	129
Median Sale Price	\$ 500,000	\$ 530,000

**DAYS ON THE MARKET (SOUTHLAKE)**



**SOUTHLAKE MKT SHARE BY PRICE RANGE**



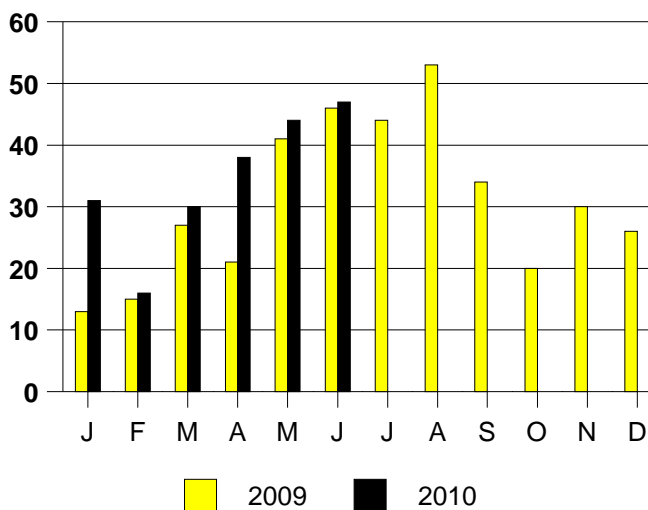
**SALE/LIST PRICE RATIO**

0K-100K	NONE
101K-150K	NONE
151K-200K	96.9%
201K-300K	93.8%
301K-500K	97.2%
501K-750K	96.9%
751K+	96.6%

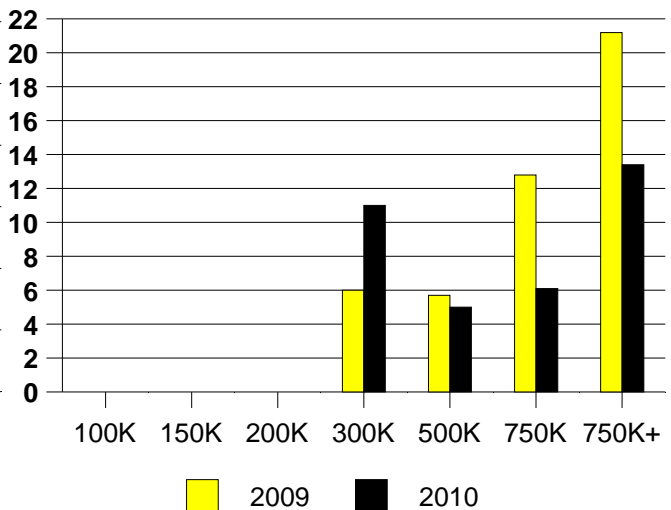
**AVERAGE OVERPRICING**  
Original List Price to Sale Price

2009	8.3%
2010	7.8%

**SOUTHLAKE MONTHLY SALES**



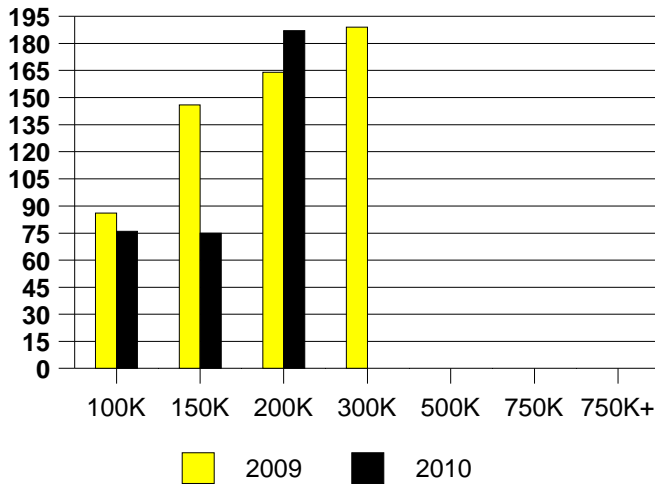
Inventory not shown where no sales  
**SOUTHLAKE MONTHS OF INVENTORY**



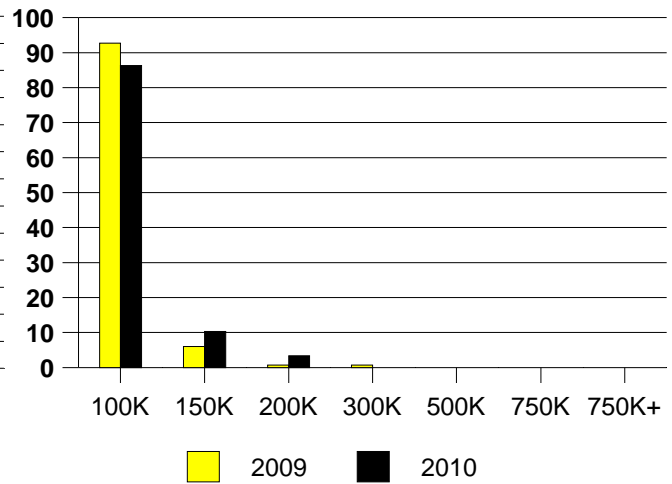
NTREIS Sold informaton as of 07/03/2010

	<u>2009</u>	<u>2010</u>
Total Sold Volume	\$8,708,605	\$ 7,777,689
Number of Sales	150	117
Median Sale Price	\$ 53,782	\$ 65,000

**DAYS ON THE MARKET (OAK CLIFF)**



**OAK CLIFF MKT SHARE BY PRICE RANGE**



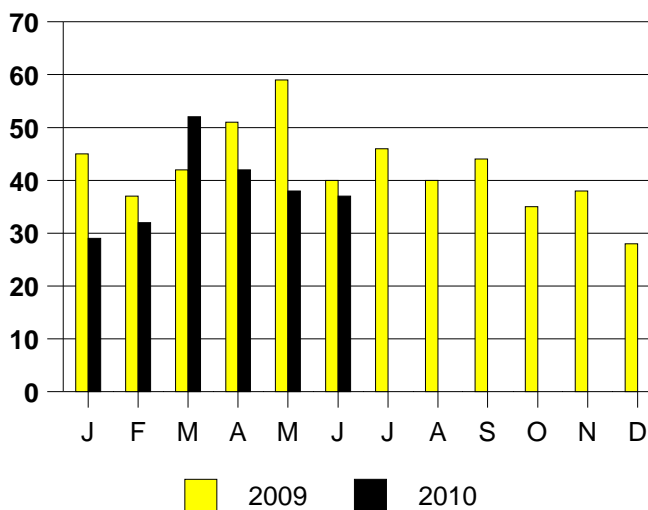
**SALE/LIST PRICE RATIO**

0K-100K	99.2%
101K-150K	97.4%
151K-200K	89.3%
201K-300K	NONE
301K-500K	NONE
501K-750K	NONE
751K+	NONE

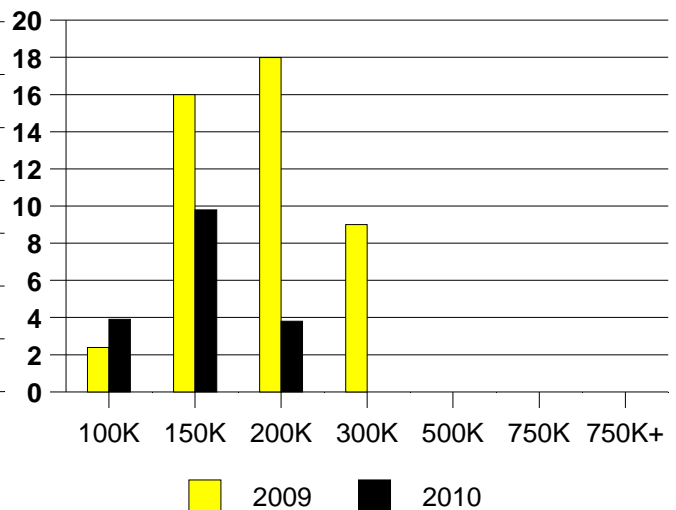
**AVERAGE OVERPRICING**  
Original List Price to Sale Price

2009	16.4%
2010	14.6%

**OAK CLIFF MONTHLY SALES**



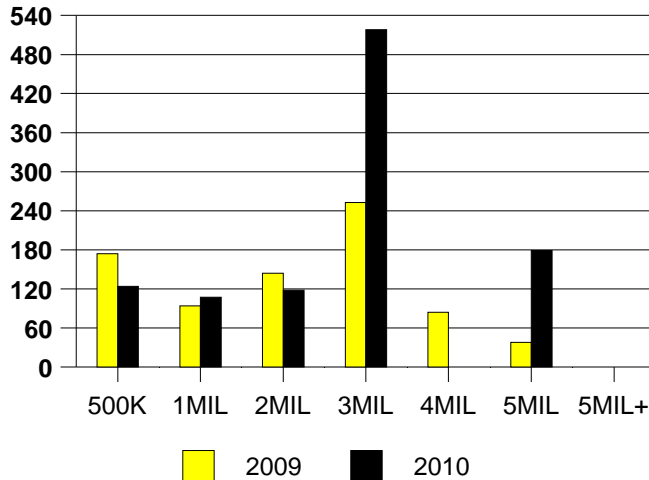
Inventory not shown where no sales  
**OAK CLIFF MONTHS OF INVENTORY**



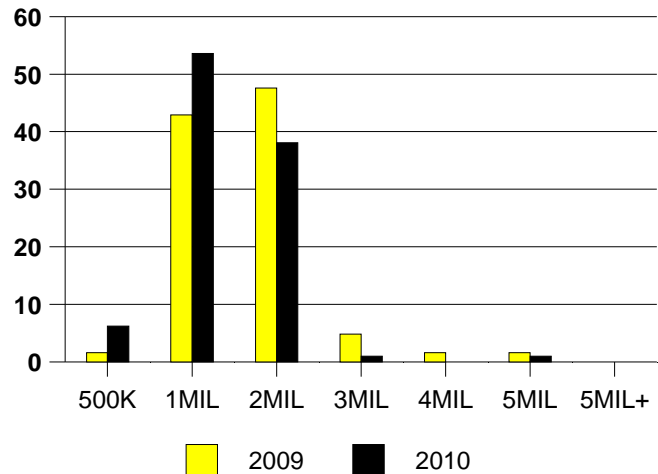
NTREIS Sold informaton as of 07/03/2010

	2009	2010
Total Sold Volume	\$ 81,315,656	\$ 99,644,576
Number of Sales	63	97
Median Sale Price	\$ 1,039,000	\$ 875,000

DAYS ON THE MARKET (UNIV PARK)



MKT SHARE BY PRICE RANGE(UP)



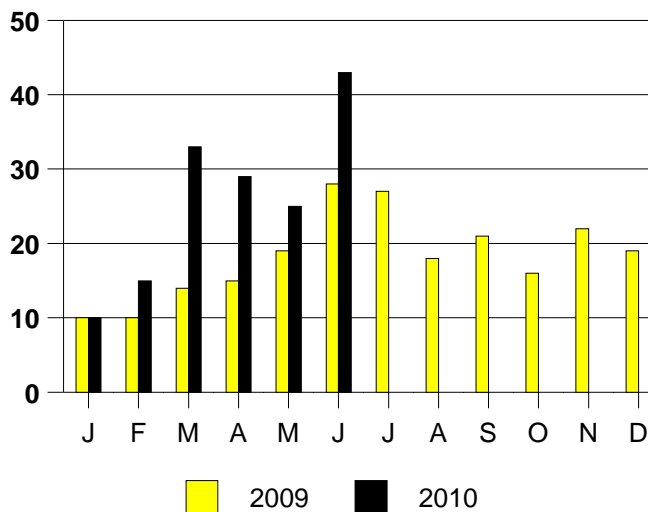
SALE/LIST PRICE RATIO

0K-500K	92.6%
501K-1MIL	95.1%
1MIL-2MIL	95.3%
2MIL-3MIL	100.0%
3MIL-4MIL	NONE
4MIL-5MIL	100.0%
5MIL+	NONE

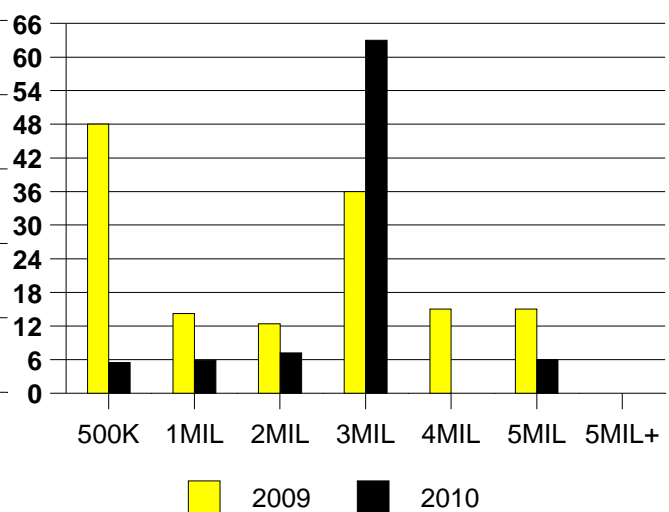
AVERAGE OVERPRICING

Orig List Price to Sale Price	
2009	15.4%
2010	10.5%

UNIVERSITY PARK MONTHLY SALES



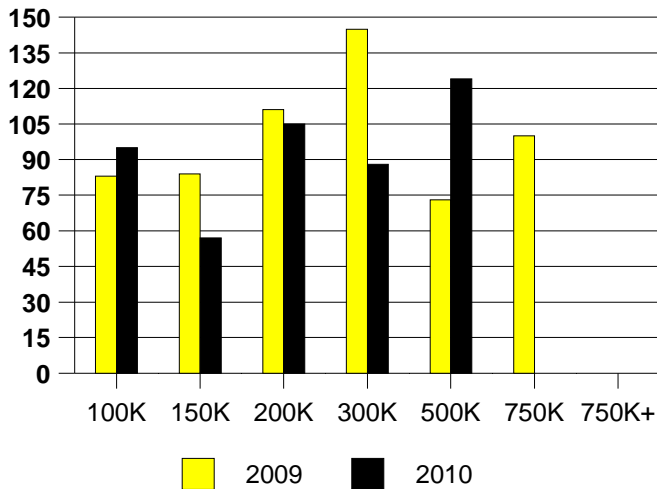
Inventory not shown where no sales  
UNIV PARK MONTHS OF INVENTORY



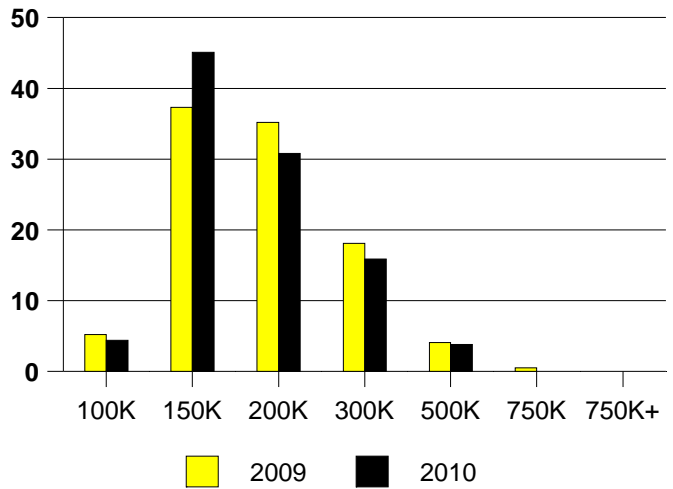
NTREIS Sold information as of 07/03/2010

	<u>2009</u>	<u>2010</u>
Total Sold Volume	\$ 32,990,400	\$ 29,954,132
Number of Sales	193	182
Median Sale Price	\$ 156,000	\$ 152,000

**DAYS ON THE MARKET (WYLIE)**



**WYLIE MKT SHARE BY PRICE RANGE**



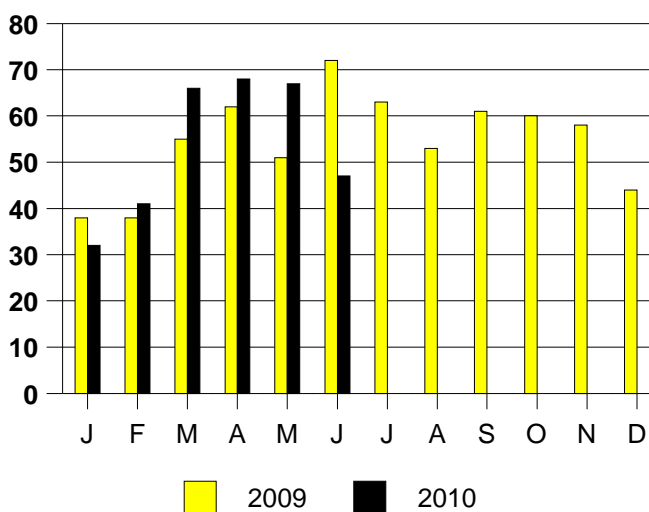
**SALE/LIST PRICE RATIO**

0K-100K	94.1%
101K-150K	97.9%
151K-200K	97.7%
201K-300K	97.3%
301K-500K	96.9%
501K-750K	NONE
751K+	NONE

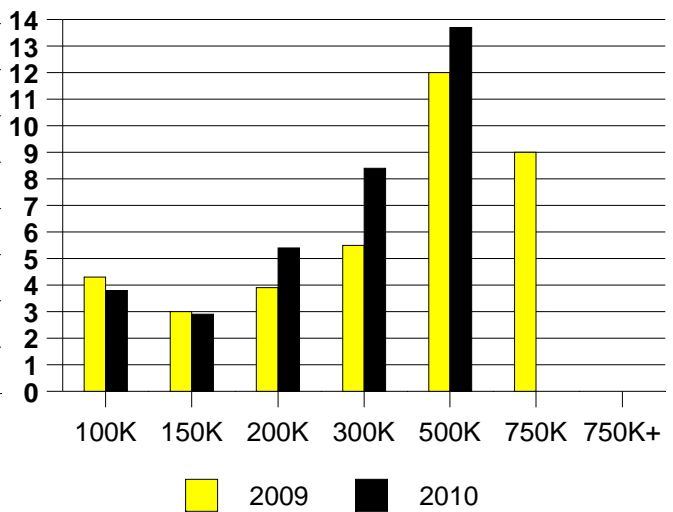
**AVERAGE OVERPRICING**  
Original List Price to Sale Price

2009	7.5%
2010	5.8%

**WYLIE MONTHLY SALES**



Inventory not shown where no sales  
**WYLIE MONTHS OF INVENTORY**



NTREIS Sold informaton as of 07/03/2010